

# Supporting multicultural and faith communities prevent family violence: 2021 grant program

Information sessions: 31 March and 7 April 2021

**OFFICIAL**

# Agenda

1. Grant program overview
2. Primary prevention and early intervention approaches
3. Program objectives
4. Program streams and funding
5. Types of activity eligible for funding
6. Eligible organisations
7. Assessment criteria
8. How to apply
9. Funding agreements
10. Questions

# Grant program overview

- 3 year, merit-based grant program (1 July 2021 to 30 June 2024)
- administered by the Office for Prevention of Family Violence and Coordination (OPFVC) in the Department of Families, Fairness and Housing (DFFH)
- build capacity of multicultural and faith communities to prevent family violence and all forms of violence against women
- innovative, culturally appropriate, tailored projects

# Primary prevention and early intervention

- evidence base - *Change the Story: A shared framework for the primary prevention of violence against women and their children in Australia*
- address the underlying gendered drivers of violence and intersecting reinforcing factors that increase the probability, frequency or severity of violence



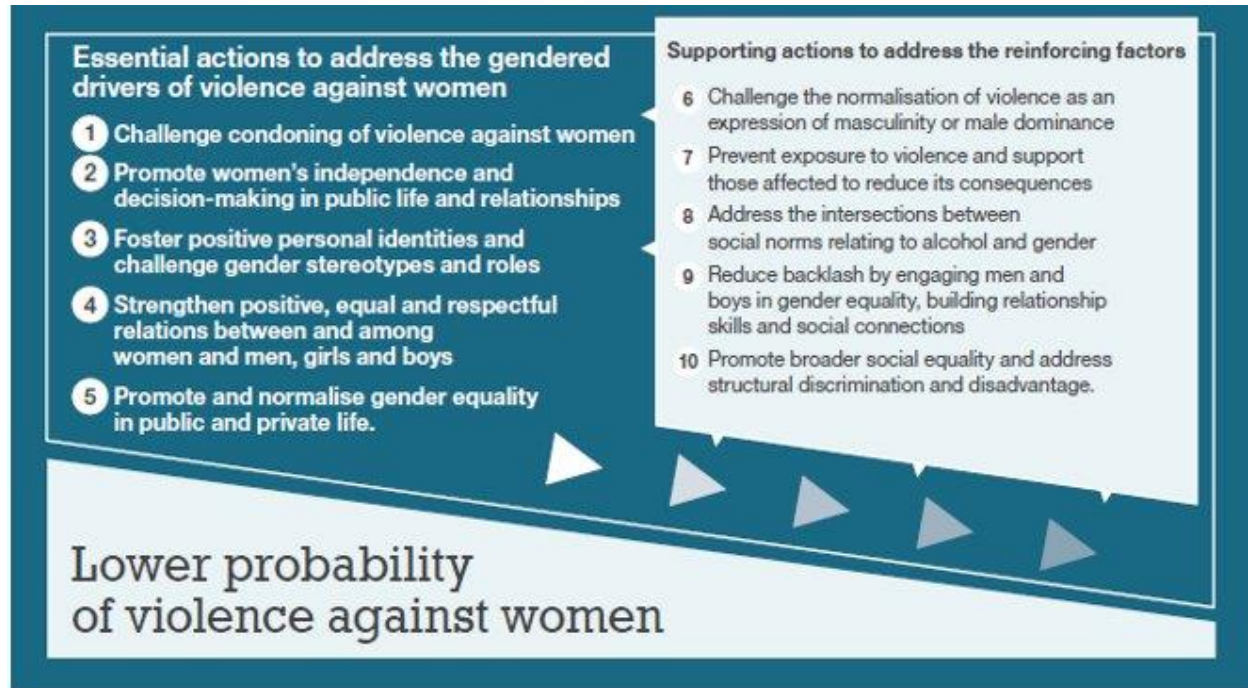
# Drivers of violence against women

Gender inequality sets the necessary social context



# Actions to prevent violence against women

Promote and normalise gender equality in public and private life



# Program objectives

Your project should align with one or more of the following objectives:

- deepen and expand primary prevention and early intervention activity with multicultural and faith communities
- continue to build and enhance the collective knowledge of successful primary prevention and early intervention activity and intersectional practice
- strengthen the capacity of organisations working with multicultural and faith communities in primary prevention and early intervention activity

# Program objectives

- improve the identification and response to victim survivors of violence by better joining primary prevention activity with early intervention activity in a wide range of settings

In your application:

- clear link between the proposed project activities and the grant program objective(s)
- identify the intended impact of your project and how the project will achieve its objectives



# Program streams and funding

## Stream 1

- funding of up to \$200,000 (excl. GST) per organisation, per year until 30 June 2024
- organisations with demonstrated experience in prevention and/or early intervention of family violence and all forms of violence against women

# Program streams and funding

- design and delivery of prevention and/or early intervention of family violence and/or all forms of violence against women activities with multicultural and/or faith communities
- state-wide, regional and/or local level



# Program streams and funding

## **Stream 2 (primary prevention/early intervention)**

- funding of up to \$100,000 (excl. GST) per organisation, per year to 30 June 2024
- organisations with new or limited experience in prevention and/or early intervention of family violence and all forms of violence against women
- design and delivery prevention and/or early intervention of family violence and/or all forms of violence against women activities with multicultural and/or faith communities, and/or

# Program streams and funding

- organisational capacity building
- recommended to partner with an organisation with demonstrated experience



# Types of activity eligible for funding

Any type of primary prevention and/or early intervention of family violence and/or all forms of violence against women activity with multicultural and faith communities

## **Highly regarded activities:**

- essential actions identified in *Change the Story*
- prevention of all forms of family violence, including coercive control, financial abuse, sexual violence and dowry abuse
- intersectional practice and inclusivity

# Types of activity eligible for funding

- new and emerging multicultural communities, including migrants, refugees and temporary residents
- regional or rural areas in Victoria
- community-led initiatives
- youth-led activity and youth engagement
- multicultural and/or faith communities that have not received Victorian Government funding in family violence prevention and early intervention

# Types of activity eligible for funding

## Key settings:

- religious and faith-based settings
- sport and recreation settings
- youth settings
- arts and cultural settings
- workplace settings (including those with strong engagement with clients and customers)
- healthcare settings
- early childhood settings

# Types of activity eligible for funding

## **Examples of activities:**

- community awareness and education programs
- accessible online communication and engagement activities (though not desirable as the sole focus of the project)
- community mobilisation and strengthening programs
- economic empowerment activities
- peer education programs



# Types of activity eligible for funding

- gender equal parenting programs
- connection-building between multicultural and faith communities/community groups and specialist family violence and sexual assault services
- build practitioner understanding and capacity in family violence early intervention



## Activities not funded

- family violence crisis response activities
- projects that are primarily focused on the training and development of specialist family violence, sexual assault services and universal services to provide culturally sensitive and inclusive services to multicultural communities
- standalone research or projects primary focused on building the evidence base solely through research

## Activities not funded

- individual evaluation of an organisation's activities
- activity already funded by the Victorian Government, including by another grant program (extending/adding to an existing activity is suitable, if need can be demonstrated)
- activities that are primarily for political or religious purposes
- advertising or fundraising activities
- travel outside of Victoria or funding for visitors from outside Victoria

# Eligible applicants

This grant program is aimed at:

- organisations working with multicultural and faith communities in Victoria, including:
  - ethno-specific organisations
  - faith-based organisations and institutions that are part of a multicultural community
  - settlement organisations
  - family violence primary prevention and early intervention organisations

## Eligible applicants

- stream 1 - organisations with established experience in prevention of family violence and all forms of violence against women
- stream 2 – organisations with new or limited experience in the prevention of family violence and/or violence against women

### **Your organisation must:**

- have a current Australian Business Number (ABN)
- have no outstanding accountability reports or final reports for any grant managed by DFFH or DPC

# Eligible applicants

## **Your organisation must be one of the following entity types:**

- incorporated associations
- incorporated cooperatives
- not-for-profit entity
- social enterprise

# Ineligible applicants

- individuals and sole traders
- organisations proposing activity outside of Victoria
- a local government authority as a lead or independent applicant
- entities that have failed to comply with the terms and conditions of previously awarded grants

# Assessment criteria

## Stream 1

- demonstrated experience, capacity and capability to engage with multiple multicultural and/or faith communities in primary prevention and/or early intervention
  - workforce with lived multicultural and/or faith experience
  - experience designing and delivering community-based or community-led projects in primary prevention and/or early intervention



## Assessment criteria

- demonstrable history of effective design and delivery of Victorian Government grants of similar size, scope and scale

### **Desirable:**

- plan to test and trial new and innovative prevention activities
- plan to partner with other relevant organisations and/or community groups
- plan to conduct highly regarded activity (as listed previously)

# Assessment criteria

## Stream 2 (prevention activity)

- demonstrated willingness and readiness to engage multicultural and/or faith communities in primary prevention and/or early intervention
  - experience in working with multicultural and/or faith communities to address and prevent complex social issues that may or may not involve family violence

# Assessment criteria

## Desirable

- plan to partner with organisations with established experience in delivering prevention and/or early intervention activities
- plan to conduct highly regarded activity (as listed previously)
- experience in the effective design and delivery of a Victorian Government grant

# Assessment criteria

## Stream 2 (capacity building)

- plan to partner with organisations with established prevention and/or early intervention experience



# Assessment criteria

## Both streams

- comprehensive plan to work with multicultural and/or faith communities in primary prevention and/or early intervention
  - outlining how you will address community need, benefits to the community, value for money in conducting the activity
- plan for responding to disclosures of family violence
- plan for responding to resistance and backlash from the community and within your organisation

# Assessment criteria

## **Tips:**

- be clear, specific and detailed in your answers
- Read the Program Guidelines
- Read the Guidance for Applicants document

# How to apply

- DFFH prefers that you apply online - click on the 'apply now' button on the grant webpage

**Apply online**



- if you are unable to, please request a Microsoft Word version of the application form that you can email to the OPFVC, along with supporting documentation

# How to apply

Applicants **must** attach the following supporting documentation:

- project plan and project budget using the templates on the grant webpage
- organisation's most recent Annual Report or financial statement
- evidence of the number of Full Time Equivalent (FTE) employed at your organisation and any regular hours contributed by volunteers



# How to apply

- evidence of your work (e.g. program or activity report, recent publication, link to your website)
- Certificate of Currency for your organisation's Public Liability Insurance



# How to apply

Applicants **may** need to attach the following documentation:

- at least one quote for expenditure items costing between \$10,000 and \$50,000 and three quotes for items over \$50,000
- letter(s) of support from partner organisation(s)

# Funding agreement

- successful applicants will receive an Offer of Funding and have 30 business days to enter into a Victorian Common Funding Agreement with the OPFVC.
- grantees may be prescribed under the Multi-Agency Risk Assessment and Management Framework (MARAM), the Child Information Sharing Scheme and the Family Violence Information Sharing Scheme
  - refer to the ‘Guidance for Applicants’ document for more information (available on the grant webpage)

## Frequently Asked Questions

### **Can projects focus on preventing all forms of violence against women, or do they have to focus on family violence?**

You can choose whether to focus on all forms of violence against women or focus on family violence, or both.

In your application you should specify which forms of violence you will focus on.

# Frequently Asked Questions

## **Do projects have to include both primary prevention and early intervention activities?**

No, you can choose whether you want to focus on one approach or both.

In your application you should specify which approach you will take.

# Frequently Asked Questions

## **Are projects that engage Aboriginal and Torres Strait Islander communities eligible?**

No, projects that will engage Aboriginal and Torres Strait Islander communities are not eligible for this grant program.

Keep an eye on the Victorian Government grants page ([www.vic.gov.au/grants](http://www.vic.gov.au/grants)) for upcoming opportunities for Aboriginal and Torres Strait Islander communities.

## Frequently Asked Questions

**For organisations in rural/regional areas, some ethnic or cultural communities we want to work with are small in number. Will this impact the competitiveness of our application?**

No, the reach of your proposed project will not impact the merit assessment. It is more important to clearly demonstrate the needs of the community(ies) and how your project will address those needs.

We strongly encourage organisations in regional or rural areas to apply for this grant.

# Frequently Asked Questions

**Our project will utilise a co-design methodology to determine some of the primary prevention activities, but this means we can't outline these activities in the grant application. Is that ok?**

Yes. However, you should explain the co-design process, including who will be involved, what participants will be 'co-designing', the co-design process you will follow, what outcomes the co-designed activities are intended to achieve, examples of the types of activities that may be chosen by co-design participants, and if relevant, examples from previous co-designed primary prevention projects.



# Frequently Asked Questions

**Stream 2 (capacity building): are projects that build the capacity of mainstream family violence prevention services to better respond to CALD communities eligible?**

No, this stream will only fund applicants who have new and limited experience in primary prevention/early intervention to build their organisations capacity to do this work in the future.

Program Guidelines, p.6 lists the types of activities that are ineligible for a grant through this program.

# Frequently Asked Questions

## **Can organisations that apply for Stream 1 funding engage in capacity building activities?**

It is expected that Stream 1 organisations have the experience, capacity and capability to engage in primary prevention and/or early intervention with multicultural and/or faith communities.

However, capacity building is an ongoing process and so may form part of your project but should not be the primary focus. This may be particularly relevant for applicants who propose to deliver activities in new areas or with communities not previously engaged.

# Frequently Asked Questions

## **If you apply for one stream but are better suited to another, is it possible to change which stream you apply for?**

Yes. If an assessor sees the project has merit but would be better suited to an alternative stream, they will contact you about this and may request further information.

It's important that you carefully consider which stream is most appropriate for your organisation to avoid causing disruption to your project plans (e.g. if you are moved to stream 2, which provides less funding, you will need to revise your project budget).

# Frequently Asked Questions

## **Is it preferred/desirable that applicants submit a project logic with their application?**

It is not a requirement to submit a project logic with your application.

However, project logics can be a good way to demonstrate the short, medium and long-term outcomes of the project. It may also help demonstrate the sustainability and ongoing community benefit of the project once grant funding has ended.

## Frequently Asked Questions

### **Is there a limit to the number of attachments you can upload with the application?**

Yes, for each document type you can only upload one or two documents. If you would like to attach more (e.g. Letters of Support from partner organisations), you can email those documents to [prevention.grants@dffh.vic.gov.au](mailto:prevention.grants@dffh.vic.gov.au) along with your submission ID number (when you submit your application, you will receive an email with this information). Please do so by close of business 21 April.

# Frequently Asked Questions

**Will funding be taken from grants awarded to successful applicants for the purpose of evaluation?**

No, this grant program has a separate pool of funding for the purpose of evaluation.

# Frequently Asked Questions

## **Why don't applicants have to submit an evaluation plan as part of the application process?**

The OPFVC are developing an evaluation plan for the grant program. This will outline the data and information needed to monitor and evaluate the success of funded projects and the Grant Program overall.

Successful applicants will be provided guidance on developing an evaluation plan for their project that aligns with the Grant Program Evaluation Plan.

# Frequently Asked Questions

## **Do applicants have to partner with another organisation?**

No, but the involvement and engagement of other organisations in your project will be well regarded. You can also form partnerships with more than one organisation if they offer experience in different aspects of your project.

You must reach agreements with partners before you apply for the grant and you must upload a letter of support in the Supporting Documentation section when completing your online application.



## Frequently Asked Questions

**If our project will develop new partnerships in year 2 or 3 of funding based on activities completed in the first year, can we provide those letters of support at a later date?**

Yes.

Keep in mind that a letter of support strengthens your application as it indicates your project has been planned appropriately and increases confidence you have the partnerships/relationships necessary to deliver the proposed activities.

# Frequently Asked Questions

**Schools are on holidays until after the grant closes, so we can't provide a letter of support from partner schools – can we supply this later after the grant closes?**

Yes, you can email the letter of support to [prevention.grants@dffh.vic.gov.au](mailto:prevention.grants@dffh.vic.gov.au) by Wednesday 28 April at the latest and the letter will be added to your application.

Keep in mind we will assess applications from 22 April – 30 April. If the letter of support is not provided by the time your application is assessed, it cannot be included in your assessment.

## Frequently Asked Questions

**If there is a partnership between a mainstream organisation and an ethno-specific organisation, which should be the lead applicant?**

This will depend on your project and which organisation can best meet the eligibility and assessment criteria for the grant program.

These criteria are outlined in the Program Guidelines and Guidance for Applicants documents available on the grant webpage.

# Frequently Asked Questions

## **Can organisations in Victorian border towns partner with organisations based in NSW border towns?**

Yes, provided all project activities take place in Victoria and funding is not used to pay for people outside of Victoria to travel to Victoria.

# Frequently Asked Questions

## **Can Local Government apply?**

Local Government's cannot apply as a lead applicant, however they can partner with organisations submitting an application.

To be a partner to a lead organisation, A Letter of Support must be provided that outlines the contributions, roles and responsibilities of the partner organisation, and why the partnership is needed to deliver the project successfully.

# Frequently Asked Questions

## **Can organisations apply for more than one project?**

No, only one application per lead organisation will be considered under the program.

However, organisations can appear on more than one application as partners of various lead organisations.

## Frequently Asked Questions

### **Can organisations apply for funding to extend upon existing work funded by OPFVC?**

Yes. You will need to demonstrate how this funding will complement, extend upon or add to existing work that has shown promising results.

Applicants will also need to clearly demonstrate community need.

# Frequently Asked Questions

**To be eligible, you must have no outstanding accountability reports or final reports for any grant managed by DFFH or DPC. What does this mean?**

This means that you do not have any overdue reports that should have already been submitted to DFFH or DPC at the time you submit your application.

If you have a report due after you have submitted your grant application, this will not impact your eligibility.



## Frequently Asked Questions

**If my organisation is implementing a project funded through another grant program, can we also apply for this grant?**

Yes, you can apply for the Supporting Multicultural and Faith Communities to Prevent Family Violence grant program if you already receiving funding through another program.

# Frequently Asked Questions

## **How many projects will be funded through this grant program?**

It's not possible to know how many projects will be funded, as organisations will apply for different amounts of funding. For example, while Stream 1 provides funding of up to \$200,000 per year, one organisation may apply for \$150,000 and another may apply for \$170,000.

# Frequently Asked Questions

## **Is it possible to have different amounts of money allocated to different years of funding?**

Yes, this can be determined during the contracting stage. In your application you will apply for a total funding amount for the three years (1 July 2021 – 30 June 2024), and in the budget template you can outline how the money will be allocated across the years.

Keep in mind the maximum funding amounts per year – for Stream 1, this is \$200,000 per year and for Stream 2, this is \$100,000 per year.

# Frequently Asked Questions

## **Can applicants contact the OPFVC during the application period to ask questions?**

Yes, you can contact the prevention grants team at [prevention.grants@dffh.vic.gov.au](mailto:prevention.grants@dffh.vic.gov.au) or (03) 9595 2490.

Please note the cut-off date for queries relating to the grant is Monday 19 April.

# Frequently Asked Questions

## **Can the due date be extended?**

Unfortunately the due date cannot be extended.

The OPFVC has a short timeframe to assess, approve and execute Common Funding Agreements and deliver payments to successful applicants.

# Frequently Asked Questions

## **When are applications due and when will funded projects be announced?**

Applications are due on 21 April, 2pm. Don't leave this to the last minute!

The last date for queries to be sent to OPFVC is Monday 19 April.

Funded projects will be announced in May.

# Frequently Asked Questions

## **Will there be another prevention grant program next year?**

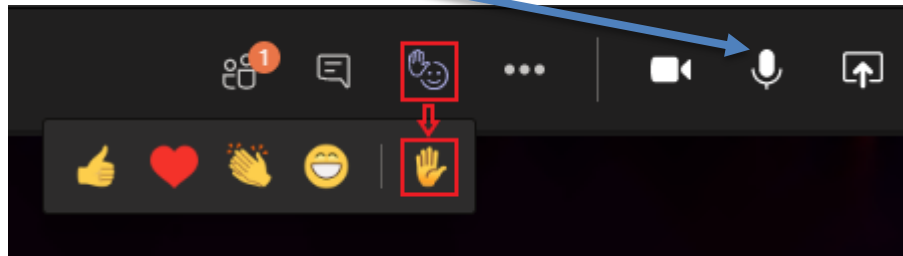
We are unsure at this time whether a new round of grants will be available next year through the OPFVC.

The 'Supporting Multicultural and Faith Communities to Prevent Family Violence: 2021 Grant Program' is a unique opportunity for multi-year funding, so we encourage you to apply!

# Questions

## If you would like to ask a question:

- please use the 'raise hand' button on your top tool bar and when your name is called and unmute your microphone



- or type your question in the chat



## Contact details

Program manager: Ebony King

Email: [prevention.grants@dffh.vic.gov.au](mailto:prevention.grants@dffh.vic.gov.au)

Phone: (03) 9595 2490

# Accessibility statement and publisher information

To receive this presentation in another format phone (03) 9595 2490, using the National Relay Service 13 36 77 if required, or [email the Office for Prevention of Family Violence and Coordination grants team](mailto:prevention.grants@dffh.vic.gov.au) <prevention.grants@dffh.vic.gov.au>.

Authorised and published by the Victorian Government, 1 Treasury Place, Melbourne.

© State of Victoria, Australia, Department of Families, Fairness and Housing, March 2021.

Except where otherwise indicated, the images in this presentation show models and illustrative settings only, and do not necessarily depict actual services, facilities or recipients of services.

Available at the [Supporting Multicultural and Faith Communities to Prevent Family Violence: 2021 Grant Program](https://www.vic.gov.au/dffh/prevent-family-violence-2021-grant-program) webpage <<https://www.vic.gov.au/dffh/prevent-family-violence-2021-grant-program>>