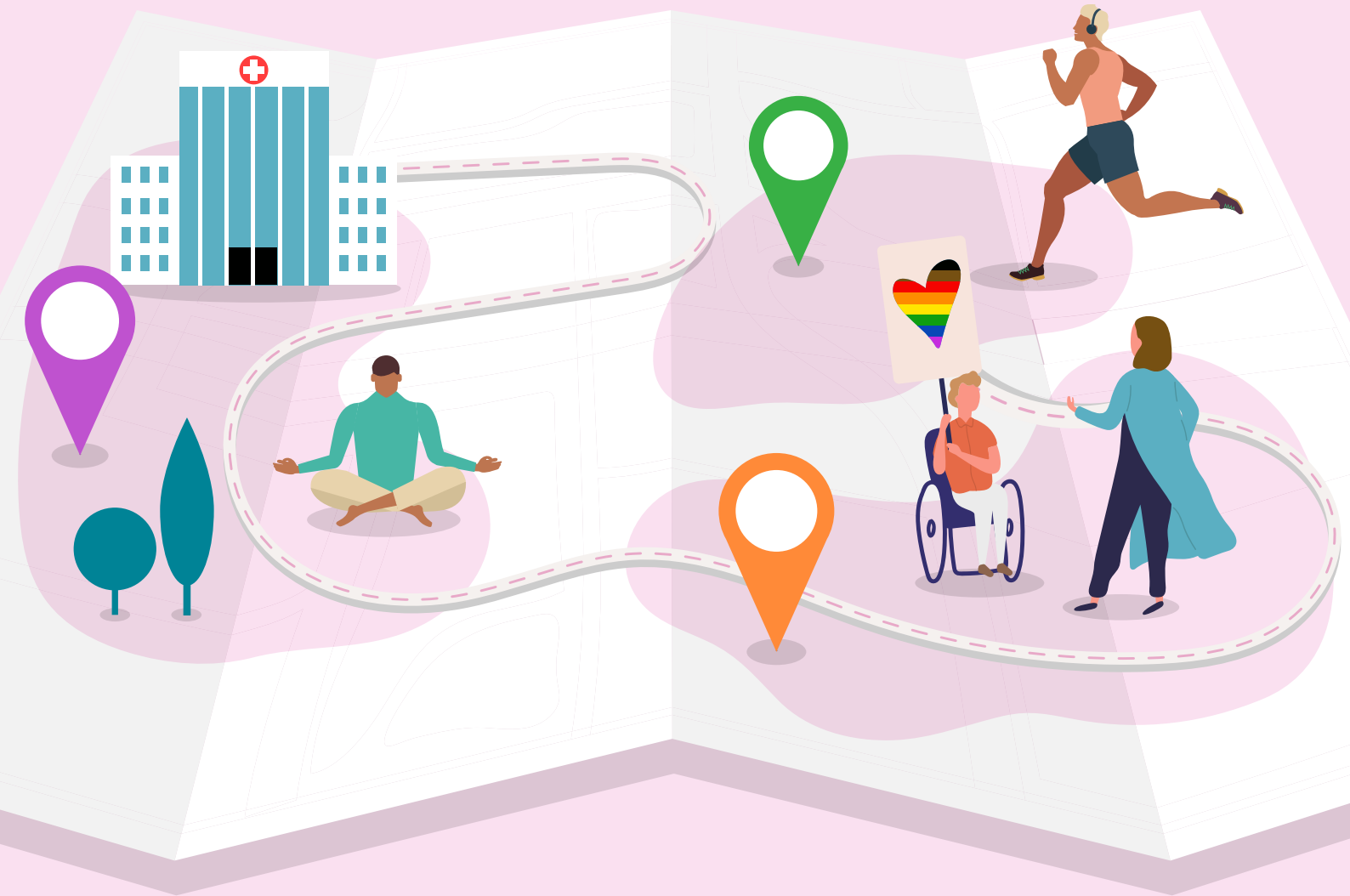


Rainbow Ready roadmap



Guide B3: Setting guide
for health and community services



To receive this document in another format,
email the Equality Unit <equality@dffh.vic.gov.au>.

Authorised and published by the Victorian Government, 1 Treasury Place, Melbourne.

© State of Victoria, Australia, Department of Families, Fairness and Housing, October 2023.

Except where otherwise indicated, the images in this document show models and illustrative settings only, and do not necessarily depict actual services, facilities or recipients of services.

In this document, 'Aboriginal' refers to both Aboriginal and Torres Strait Islander people.

The Victorian Government acknowledges the contributions of Dr Catherine Barrett and Daniel Witthaus in development of this resource.

ISBN 978-1-76130-420-0 (online/PDF/Word)

Available at **Rainbow Ready roadmap** <<https://www.vic.gov.au/rainbow-ready-roadmap>>.

Contents

Guide B3: Setting guide for health and community services	4
About the Rainbow Ready roadmap	4
About this setting guide	4
Using the setting guide	5
Steps	5
Goals and indicators for health and community services	7
Goal	7
Indicators	7
Tips and suggested activities	8



Guide B3: Setting guide for health and community services

About the Rainbow Ready roadmap

The *Rainbow Ready roadmap* is a set of resources for rural and regional communities to build lesbian, gay, bi-sexual, intersex, queer and asexual (LGBTIQA+) inclusion. The resources were developed by LGBTIQA+ communities, for all regional and rural communities to work together and to address inequalities experienced by LGBTIQA+ people. The *Rainbow Ready roadmap* responds to calls from rural and regional Victorians for the need to build LGBTIQA+ inclusion by equipping communities with practical resources.

About this setting guide



The setting guide should be read following **Guide A: User guide.**

The setting guide for health and community services has been developed for rural and regional health and community services that want to be more LGBTIQA+ inclusive. Health and community services include hospitals, residential aged care homes, home services, disability services, mental health services, alcohol and other drug services, housing and homelessness sectors, child and family services, neighbourhood houses and other services.

This setting guide includes



A goal for health and community services to become LGBTIQA+ inclusive



10 indicators to show that the goal has been achieved



Tips and suggested activities for achieving each indicator










Using the setting guide

This setting guide is used in:

Phase 2	Phase 3	Phase 4
Assess your community group's current state of LGBTIQA+ inclusivity with the assessment and evaluation tool, identifying areas for improvement	Plan your activities using the action plan	Evaluate your progress, again using the evaluation tool to measure project outcomes against the indicators for LGBTIQA+ inclusivity

Steps

 Step 1	Read this setting guide and its goal, indicators, tips and suggested activities
 Step 2	Complete an assessment of the current state of your health or community service against the indicators, using the assessment and evaluation tool
 Step 3	Use the assessment results and setting guide to identify areas for opportunity. Develop your action plan to improve against the LGBTIQA+ indicators of inclusion
 Step 4	Deliver the activities under your action plan
 Step 5	After you have completed your project, use the assessment and evaluation Tool to again measure your progress against the LGBTIQA+ indicators of inclusion
 Step 6	Discuss evaluation results and findings with your project team and LGBTIQA+ community members. Consider making the evaluation report publicly available to demonstrate progress
 Step 7	Repeat your evaluation to check progress until all indicators have been achieved

Demonstrating Rainbow Ready status

As one of the steps to demonstrating Rainbow Ready status, you will need to complete the **evaluation tool** and meet all the indicators in this **setting guide**. Ratings of 'unmet' or 'partly met' mean you cannot show Rainbow Ready status. You will need to undertake further activities to progress in these areas.

In some instances, there may be genuine team, group or organisational constraints that mean you won't be able to meet an indicator for the time being. Where this applies, the indicator should be marked as '**unable to be met**', with an explanation of why the indicator will not be achieved.

Marking indicators as 'unable to be met' will not stop you from achieving Rainbow Ready status. Indicators that are validly marked as 'unable to be met' will not be considered for the purpose of completing the Rainbow Ready checklist.

Refer to the **user guide** for the process on how to demonstrate Rainbow Ready status.



Goals and indicators for health and community services

Goal

Service providers in health and community services understand LGBTIQ+ inequalities and ensure their services are LGBTIQ+ inclusive and responsive.

Indicators

Indicators are measures used to understand the ways in which a health or community service has strengthened its LGBTIQ+ inclusion, and where there might be room for improvement.

Each indicator aligns with one of the four core principles of LGBTIQ+ inclusion.

1 Understanding



1. Education is provided to ensure staff and volunteers understand the experiences and needs of LGBTIQ+ service users.

2 Inclusion



2. The service engages LGBTIQ+ service users to plan, implement and evaluate improvements to the service.

3 Visibility



3. The service recognises and supports local LGBTIQ+ events and commemorations.
4. LGBTIQ+ inclusive language and images are used in service materials and on websites.
5. The service has a statement of LGBTIQ+ inclusion that is publicly visible.
6. The service displays messages of welcome to LGBTIQ+ service users.

4 Safety



7. The service provides a safe and inclusive workplace for LGBTIQ+ staff and volunteers.
8. Service user assessment, processes and documentation tools are LGBTIQ+ inclusive and confidential.
9. Potential risks to the safety of LGBTIQ+ service users are identified and inform plans to promote LGBTIQ+ safety.
10. The service responds to LGBTIQ+phobic incidents by advocating for the rights of LGBTIQ+ service users and takes steps to prevent recurrence.



The 10 indicators are used to show the goal has been achieved or areas for improvement.

Tips and suggested activities

The following activities and tips will help you achieve the indicators and progress your *Rainbow Ready roadmap* activities.



Are you considering intersectionality?

Intersectionality is an approach to understanding the diverse experiences of people and their identities. It involves recognising that this can create different layers and types of discrimination for an individual or group.

It is important to understand that LGBTIQ+ experiences are not all the same.

As well as being diverse in their sexuality, gender identity or sex characteristics, LGBTIQ+ people are diverse in other ways. This might include their Aboriginality, ethnicity, skin colour, nationality, refugee or asylum seeker background, migration or visa status, language, faith, ability, age, mental health, housing status or geographic location. For example, LGBTIQ+ Victorians from ethnic faith communities experience life as LGBTIQ+, as well as being a person of colour and person of faith.

It is critical to consider intersectionality when using the *Rainbow Ready roadmap*. This will help ensure your activities engage, include, support and respond to the needs of all LGBTIQ+ people. Ask the questions: Who is not at the table? Are we including LGBTIQ+ people with different identities, and lived experiences in planning and project delivery? How are we enabling the voices of those who we don't usually hear from?

	Indicator	Tips	Activities
	<p>1.</p> <p>Education is provided to ensure staff and volunteers understand the experiences and needs of LGBTIQ+ service users</p>	<ul style="list-style-type: none"> • Staff and volunteers who understand LGBTIQ+ health and wellbeing inequalities may be more likely to understand the need for and support LGBTIQ+ inclusive service delivery. • Training should support staff to reflect on their own values and beliefs, and the impact these have on how they engage with LGBTIQ+ service users. 	<ul style="list-style-type: none"> • Schedule annual training for staff and volunteers to build knowledge and understanding of LGBTIQ+ experiences. • Develop a service policy on LGBTIQ+ inclusivity to guide inclusive practices across the service.
	<p>2.</p> <p>The service engages LGBTIQ+ service users to plan, implement and evaluate improvements to the service</p>	<ul style="list-style-type: none"> • Supporting LGBTIQ+ community members to take part in service planning and evaluation shows that LGBTIQ+ voices are helping to shape services in a way that best responds to their needs. • LGBTIQ+ community members should only be engaged where the service intends to take action. Engagement without action can erode trust. 	<ul style="list-style-type: none"> • Deliver a workplace and community wide survey to get feedback on how LGBTIQ+ inclusive the service is. • Invite LGBTIQ+ service users to join a roundtable event, tabling any live feedback or ideas shared to improve.

Indicator	Tips	Activities
 <p>3. The service recognises and supports local LGBTIQ+ events and commemorations</p>	<ul style="list-style-type: none"> • Supporting LGBTIQ+ events can be as simple as displaying flyers, or sharing messages on social media. • Supporting LGBTIQ+ events can raise the profile of the service, and communicate to LGBTIQ+ people that the service cares about their wellbeing. 	<ul style="list-style-type: none"> • Host an IDAHOBIT¹ event, and invite staff and the broader community to show pride and support for LGBTIQ+ communities • Hold an educational event or workshop on bi, trans and intersex awareness days².
<p>4. LGBTIQ+ inclusive language and images are used in service materials and on websites</p>	<ul style="list-style-type: none"> • Review the Victorian Government's <i>Inclusive language guide</i>³. • LGBTIQ+ service users will value the use of inclusive language and images, because it allows them to feel seen, valid and represented. • Inclusive language and images can have a positive impact for service users and service staff who don't feel safe disclosing their LGBTIQ+ identity. 	<ul style="list-style-type: none"> • Include inclusive language and images in printed and online materials. • Using images of local LGBTIQ+ people can be a powerful way showing LGBTIQ+ inclusion – make sure to get their consent. • Consider how images and language can be inclusive of diverse LGBTIQ+ communities. For example, you could include images of queer people of colour on your website, or offer translation services for materials for people who speak another language.
<p>5. The service has a statement of LGBTIQ+ inclusion that is publicly visible</p>	<ul style="list-style-type: none"> • Statements of commitment can communicate to LGBTIQ+ community members that your service is working to be LGBTIQ+ inclusive. • Statements of commitment can educate other services that you do not tolerate LGBTIQ+phobia. • If your service says it is LGBTIQ+ inclusive, this includes all rainbow communities. Consider whether your service understands and responds to the needs of people with an intersex variation, and whether you currently offer gender-affirming care for trans and gender diverse clients. 	<ul style="list-style-type: none"> • Develop a statement of commitment and make sure it is publicly visible.

1 Visit the Victorian Government website <<https://www.vic.gov.au/idahobit-day-events-victoria>>.

2 Transgender Day of Visibility, 31 March; Bi Visibility Day, 23 September; Intersex Awareness Day, 26 October.

3 Visit the Victorian Government website <<https://www.vic.gov.au/inclusive-language-guide>>.

	Indicator	Tips	Activities
	6. The service displays messages of welcome to LGBTIQ+ service users	<ul style="list-style-type: none"> • Rainbow trans and bi flags, stickers and badges can provide simple ‘frontline’ welcome signals. • Symbols like these should be supported by meaningful actions and policies. 	<ul style="list-style-type: none"> • Achieve Rainbow Ready status and include it in your welcome message to service users.
	7. The service provides a safe and inclusive workplace for LGBTIQ+ staff and volunteers	<ul style="list-style-type: none"> • Read the Victorian Government’s <i>Inclusive workplaces guidelines</i>⁴. • Communicate the service’s commitment to LGBTIQ+ inclusivity. • Understand that microaggressions, (for example, misgendering or getting a person’s name wrong), can contribute to an unsafe workplace. 	<ul style="list-style-type: none"> • Conduct an all staff survey to get feedback on strategies to improve LGBTIQ+ inclusivity. • Create and embed a policy that responds to LGBTIQ+phobic incidents and supports staff effectively.
	8. Service user assessment, processes and documentation tools are LGBTIQ+ inclusive and confidential	<ul style="list-style-type: none"> • Information on the sexual orientation, gender identity or intersex status of a service user should only be collected when it is deemed necessary. • Where required, only gather the information directly from the service user. Let them know what you will do with this information. • Do not make assumptions about someone’s gender or sexuality. 	<ul style="list-style-type: none"> • Review assessment and intake forms to ensure these aren’t gender binaried, (by only offering options for ‘man’ and ‘woman’). This doesn’t recognise trans and gender diverse people. • Read the Rainbow Tick resources, including the standard on disclosure and documentation. Consider a Rainbow Tick journey to strengthen your roadmap project⁵.
	9. Potential risks to the safety of LGBTIQ+ service users are identified and inform plans to promote LGBTIQ+ safety	<ul style="list-style-type: none"> • Consult with LGBTIQ+ service users about their safety concerns. • Consider any risks to LGBTIQ+ people who access services, or take part in LGBTIQ+ inclusion initiatives hosted by your service. 	<ul style="list-style-type: none"> • Create a risk management plan to ensure LGBTIQ+ service users are supported and able to feel safe. • Forge partnerships with local community groups to undertake a joint Rainbow Ready project, addressing safety concerns collaboratively.
	10. The service responds to LGBTIQ+phobic incidents by advocating for the rights of LGBTIQ+ members and taking steps to prevent future recurrence	<ul style="list-style-type: none"> • Take immediate steps to stop the incident. Offer support to the LGBTIQ+ person. • Provide feedback or discuss consequences of actions with the perpetrator. 	<ul style="list-style-type: none"> • Create a policy for responding to LGBTIQ+phobic events and a system for keeping a record of incidents, responses and follow-ups.