



Reaction to fire test report

Test standard: Ad-hoc test based off ISO 13785-1:2002


Test sponsor: Cladding Safety Victoria (CSV)

System: Aluminium composite panel (ACP) blanking wall system

Job number: RTF230142

Test date: 7 May 2024 Revision: R1.0

Quality management

Revision	Date	Information about the report			
R1.0	21 June 2024	Description	Initial issue.		
			Prepared by	Reviewed by	Authorised by
		Name			
		Signature			

Warringtonfire* Australia Pty Ltd
ABN 81 050 241 524

*As used herein, The name "Warringtonfire" and its associated IP and branding is used by Warringtonfire Australia Pty Limited in Australia under licence from Warringtonfire Testing and Certification Limited (based in the UK) for a transitional period following the acquisition of Warringtonfire Australia Pty Limited. The Warringtonfire Testing and Certification Limited continues to own the rights to "Warringtonfire" and continues to operate the global "Warringtonfire business" outside of Australia.

Contents

1.	Introduction.....	4
2.	Test specimen.....	4
2.1	Schedule of components.....	4
3.	Test procedure.....	6
4.	Test measurements and results	7
5.	Application of test results	14
5.1	Test limitations	14
5.2	Variations from the tested specimen.....	14
5.3	Uncertainty of measurements.....	14
Appendix A	Drawings of test assembly	15
Appendix B	Photographs.....	19

1. Introduction

This report documents the findings of an ad-hoc reaction to fire test for an aluminium composite panel (ACP) external wall cladding system performed on 7 May 2024. The test was based off some general requirements of ISO 13785-1:2002.

Warringtonfire performed the test at the request of the test sponsor listed in Table 1.

Table 1 Test sponsor details

Test sponsor	Address
Cladding Safety Victoria (CSV)	717 Bourke Street Docklands, VIC 3808 Australia

2. Test specimen

2.1 Schedule of components

Table 2 describes the test specimen and lists the schedule of components. These were provided by the representatives of the test sponsor and surveyed by Warringtonfire. All measurements were done by Warringtonfire – unless indicated otherwise.

Detailed drawings of the test specimen are provided in Appendix A.

Table 2 Schedule of components

Item	Description				
Cladding					
1.	Item name	Fire retardant (FR aluminium composite panel (ACP))			
	Product name	██████████			
	Manufacturer/Supplier	████████████████████			
	Material	The material was nominated as panels composed of a fire-retardant core sandwiched between two skins of 0.5 thick aluminium alloy. The material consists of approximately 70% of mineral ingredients within the core material. The core contains a trace of carbon black additives that improves its durability. The surface is finished with a Lumiflon™-based fluoropolymer coating as standard. The back side of ALPOLIC™/fr has a polyester-based wash coating or a service coating to protect it from possible corrosion problems.			
	Size	Total panel thickness – 4.0 mm Core thickness –3.0 mm Skin thickness – 0.5 mm (both) Refer to Appendix A for individual panel sizing details.			
	Areal density	Full panel – 7.6 kg/m ² as nominated			
	Colour	<table border="1"> <tr> <td>Skins</td> <td>Front skin – Tan Back skin – Light grey</td> </tr> <tr> <td>Core</td> <td>Dark grey</td> </tr> </table>	Skins	Front skin – Tan Back skin – Light grey	Core
Skins	Front skin – Tan Back skin – Light grey				
Core	Dark grey				
2.	Item name	Fire resistant plasterboard			
	Product name	████████████████████			
	Size	1200 mm wide × 3600 mm long × 13 mm thickness			

Item	Description	
Framing		
3.	Item name	Test rig frame - 90 × 90 SHS and 200 × 90 PFC frame
	Material	Steel
	Size	90 mm × 90 mm × 5 mm thick and 200 mm × 90 mm × 10 mm thick – refer to Figure 10.
4.	Item name	Top track/base track
	Material	Steel
	Size	92 mm × 3600 mm × 40 mm, 1.15 mm B.M.T.
5.	Item name	Steel stud
	Size	92 mm × 3600 mm × 40 mm, 1.15 mm B.M.T.
	Installation	Studs at every 600 mm
6.	Item name	Steel nogging
	Size	92 mm × 580 mm × 40 mm, 1.15 mm B.M.T.
	Installation	Running horizontally at about 1800 mm height
7.	Item name	Aluminium cassette angles
	Size	20 mm × 20 mm × 3600 mm, 1.6 mm thick
	Installation	Used to secure the plasterboard within the ACPs. The angle was screw fixed to both ACPs and the plasterboard using screws (item 10 and 11).
8.	Item name	Curtain wall bracket
	Size	140 mm deep (13 mm thick) × 137 tall (13 mm thick) × 76 mm wide, 100 mm deep (9 mm thick) × 100 tall (9 mm thick) × 200 mm wide
	Installation	Used to secure the studs to the test rig using tek screws (item 11).
Fixings		
9.	Item name	Wafer head screws
	Size	10g × 25 mm long
	Installation	Used to fix FR aluminium composite panel to the aluminium cassette angles
10.	Item name	Tek screws
	Size	12g × 48 mm long
	Installation	Used to fix plasterboard to the studs and aluminium cassette angles
11.	Item name	Aluminium rivets
	Size	Ø4 mm
	Usage	To fix the studs to the noggings.
Installation method		
Test rig:	The test rig frame was the main support for the test specimen, however, there were two C-purlin sections that acted as false slabs (200 mm tall). The test specimen, interconnected through studs and noggings, was fixed to the test ring using curtain wall brackets (item 7) and fixings (item 10) – see Figure 10, Figure 11 and Figure 12.	
Blanking wall	The blanking wall was composed of fire resistant plasterboards (item 2), top/base tracks (item 4), studs (item 5), noggings (item 6) and the diagonal supports, which were screw fix together using aluminium rivets (item 11). The fire resistant plasterboards (item 2) was fixed to the studs (item 5) and the aluminium cassette angles (item 7) using tek screws (item 10).	

Item	Description
Cladding	The exposed face of the specimen was clad with cassetted ACPs (item 1) that were fixed to aluminium cassette angles (item 7) using wafer head screws (item 9) at about 325 mm centres.

3. Test procedure

Table 3 details the test procedure for this reaction to fire test.

Table 3 Test procedure

Item	Detail
Statement of compliance	The ad-hoc test – which was based off ISO 13785-1:2002 - was performed to determine the reaction to fire performance of an external wall cladding when exposed to heat from a simulated external fire with flames impinging directly upon a façade. The test utilises a burner used in ISO 13785-1:2002.
Sampling / specimen selection	The laboratory was not involved in sampling or selecting the test specimen for the reaction to fire test. The results obtained during the test only apply to the test samples as received and tested by Warringtonfire.
Test duration	60 minutes
Instrumentation and equipment	<ul style="list-style-type: none"> 21 mineral insulated metal sheathed (MIMS) Type K thermocouples with an overall diameter of 1.5 mm with the measuring junction insulated from the sheath were positioned 60 mm in front of the face of the test specimen. Refer to Figure 1 for details on positioning. Temperatures were measured by seven 100 mm × 100 mm × 0.7 mm plate thermocouples with mineral insulated metal sheathed (MIMS) Type K thermocouples with an overall diameter of 1 mm with the measuring junction electrically insulated from the sheath. The thermocouple hot junction was fixed to the geometric centre of the plate by a small steel strip made from the same material as the plate. The plate thermocouples included 97 mm × 97 mm × 10 mm inorganic insulation pads. Before the first use of the plate thermocouples, they were aged by being exposed to heat in a fire-resistance test furnace for 90 min under the standard temperature/ time curve. Refer and Figure 1 for details on positioning. The fire source was a propane (95% purity) gas burner 1.2 m long × 0.1 m deep × 0.15 m tall. The burner was placed on the floor adjacent to the ACP with 25 mm thick ceramic mineral wool separating the two.
Test procedure	<ul style="list-style-type: none"> At least two minutes of baseline data was collected prior to burner ignition. Temperature data was collected at 5 s intervals. The heat output from the burner was held at 300 kW for the 30 minutes. The burner was then turned off and data recorded for the next 30 minutes.

4. Test measurements and results

The results from the tests are summarized below. Photographs of the specimen are included in Appendix B.

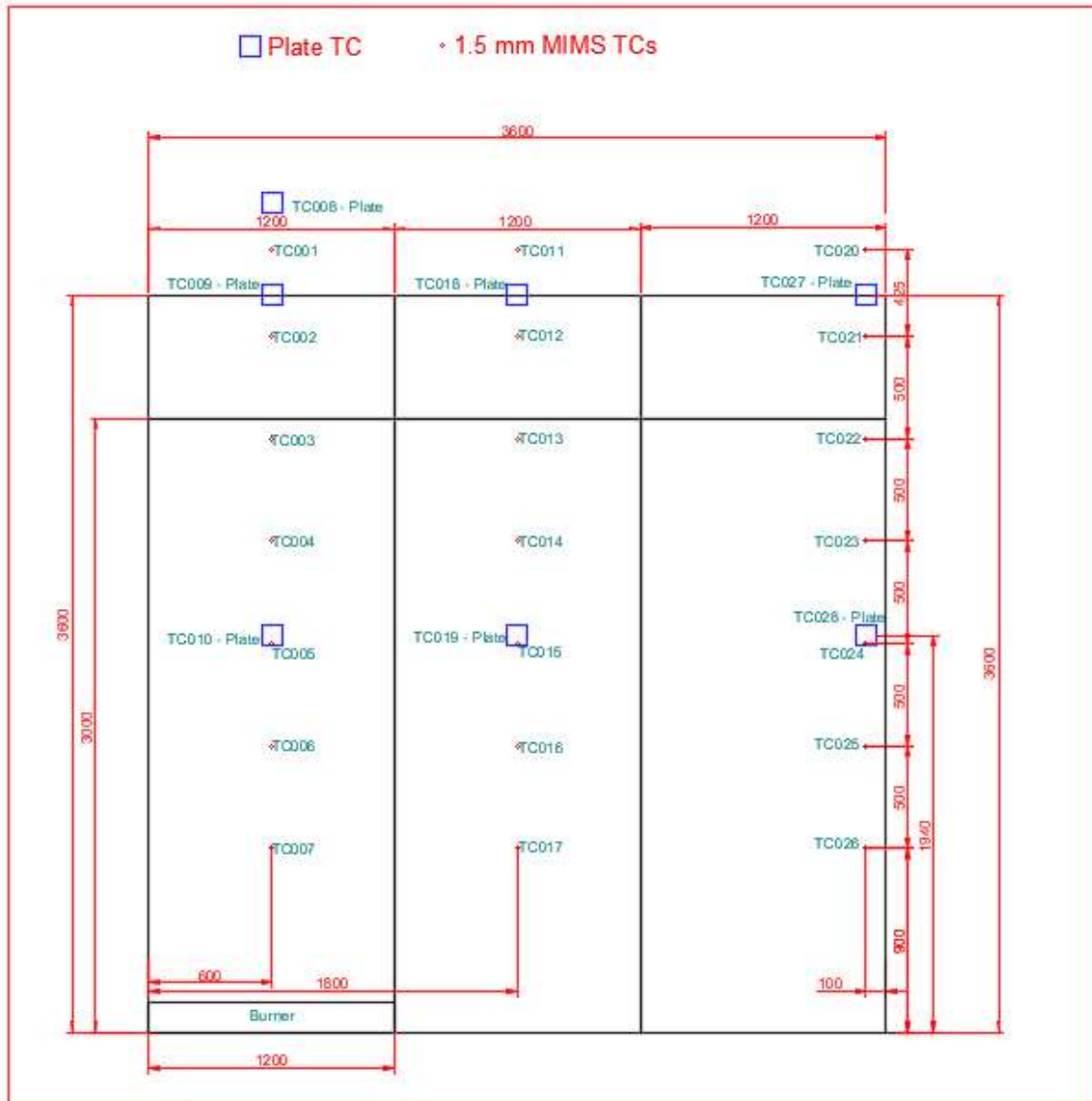


Figure 1 Instrumentation locations – front elevation

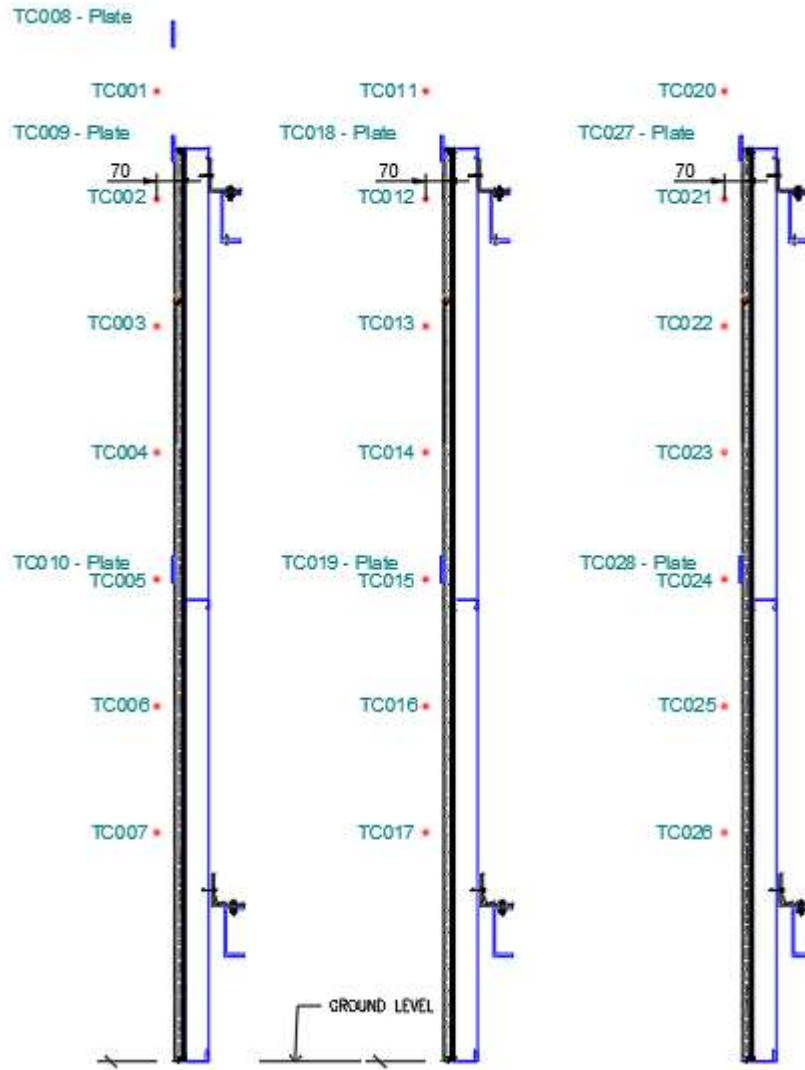


Figure 2 Instrumentation locations – sections

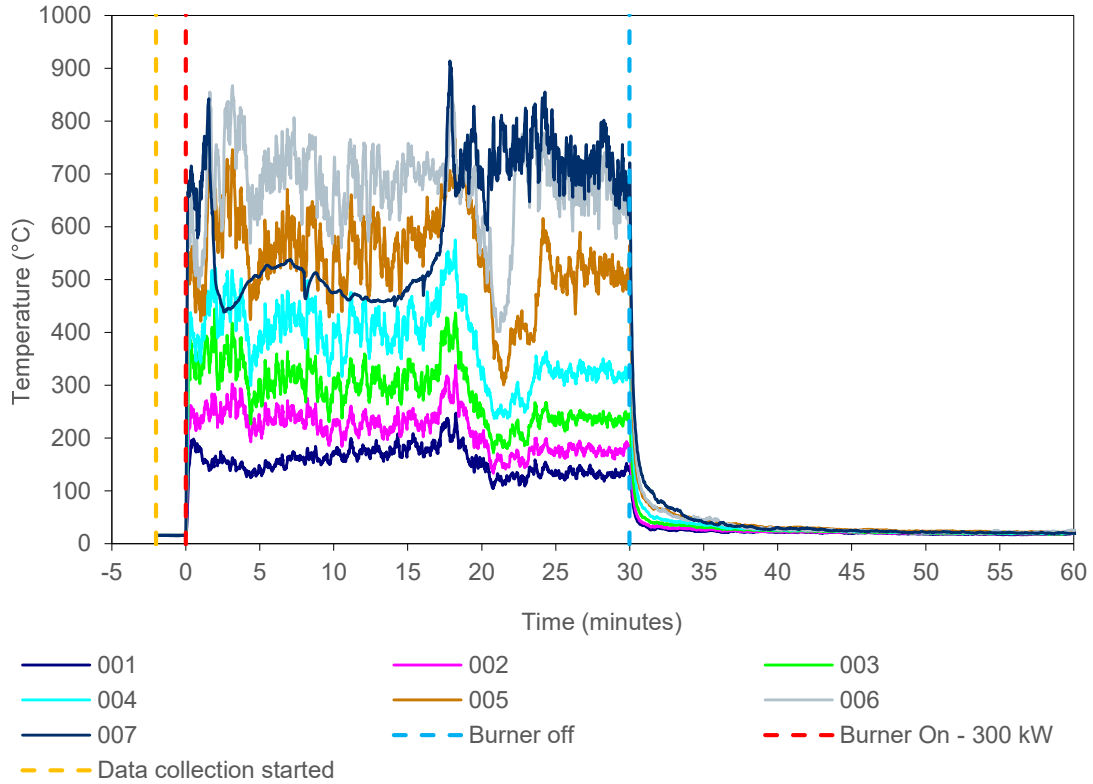


Figure 3 External temperature data collected by thermocouples placed 60 mm from the front face of the specimen - in-line with the burner.

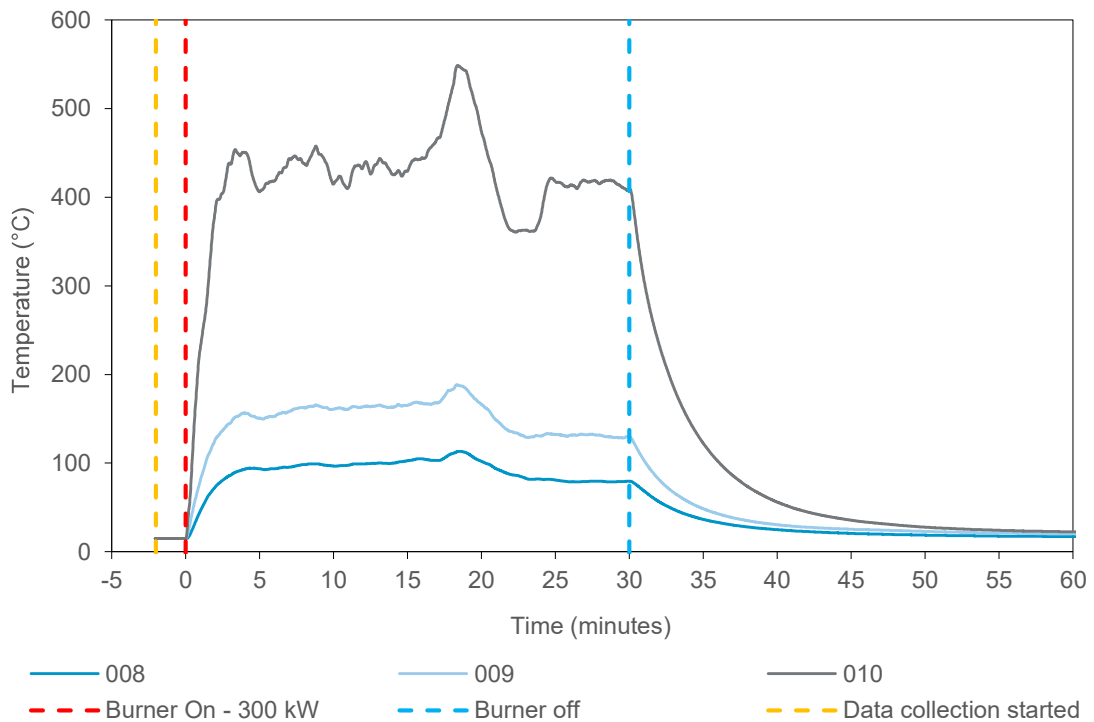


Figure 4 External temperature data collected by plate thermocouples in-line with ACP - in-line with the burner.

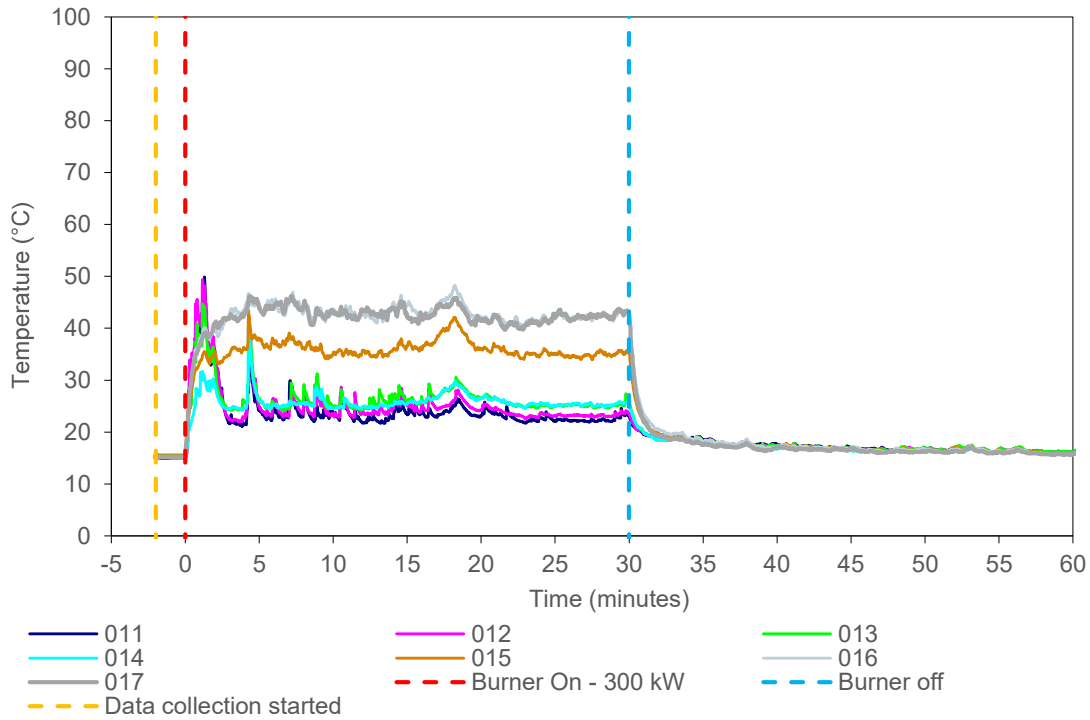


Figure 5 External temperature data collected by thermocouples placed 60 mm from the front face of the specimen – central module.

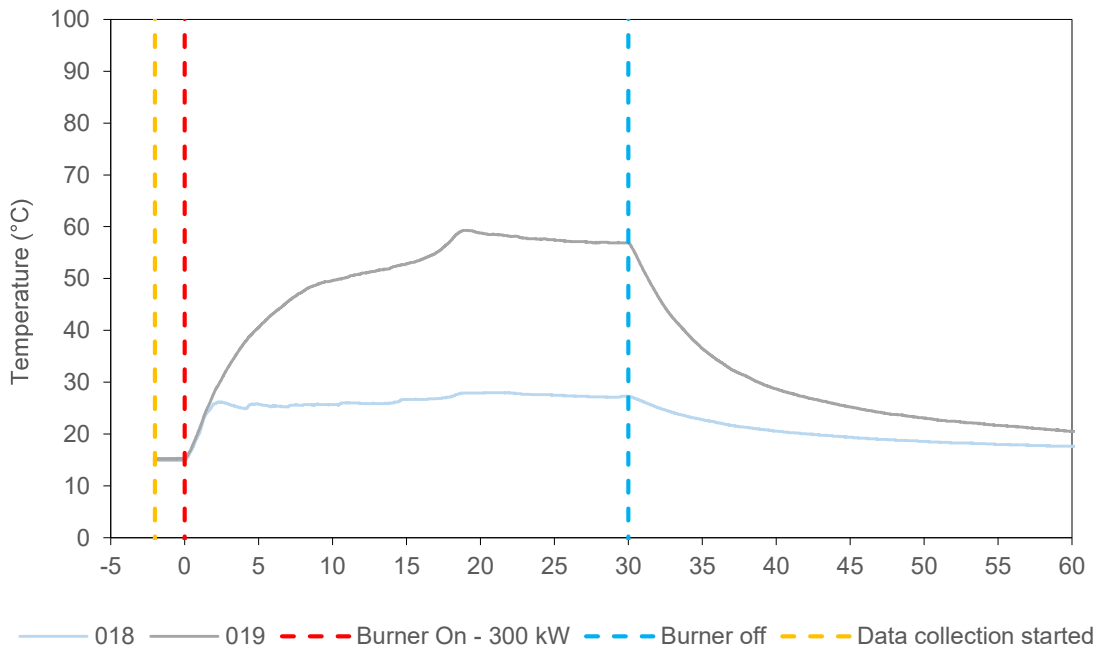


Figure 6 External temperature data collected by plate thermocouples in-line with ACP – central module.

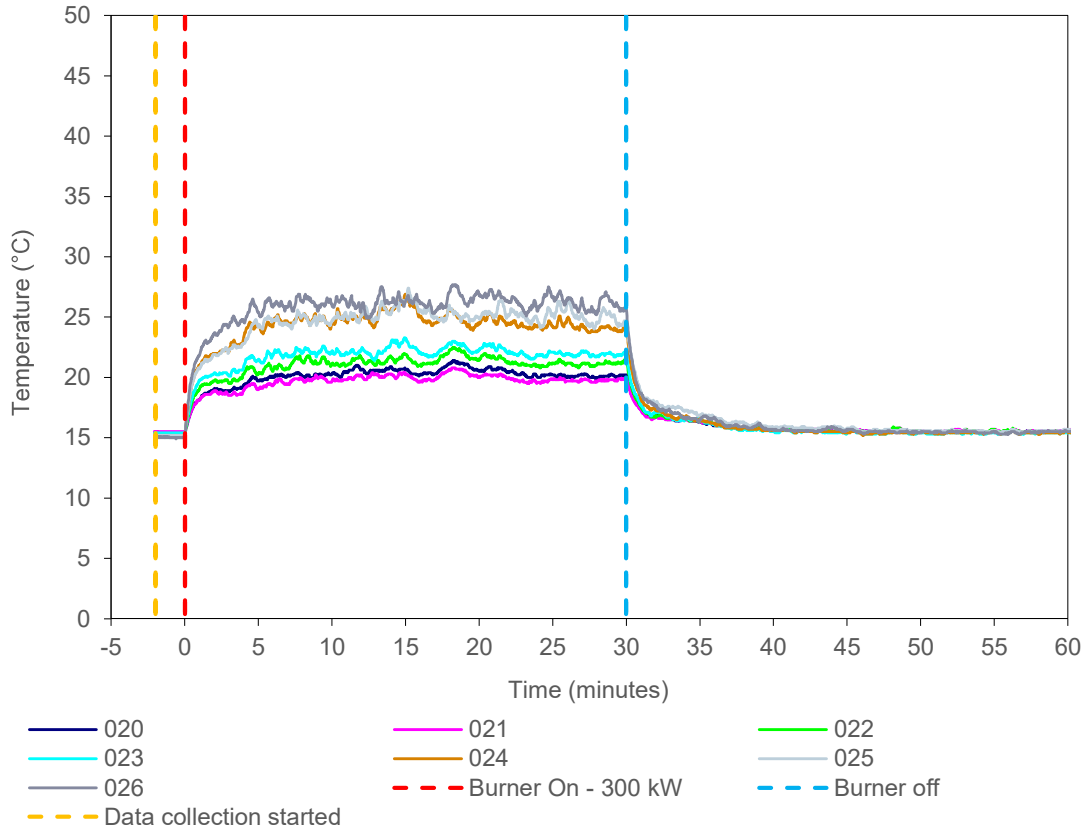


Figure 7 External temperature data collected by thermocouples placed 60 mm from the front face of the specimen – away from burner.

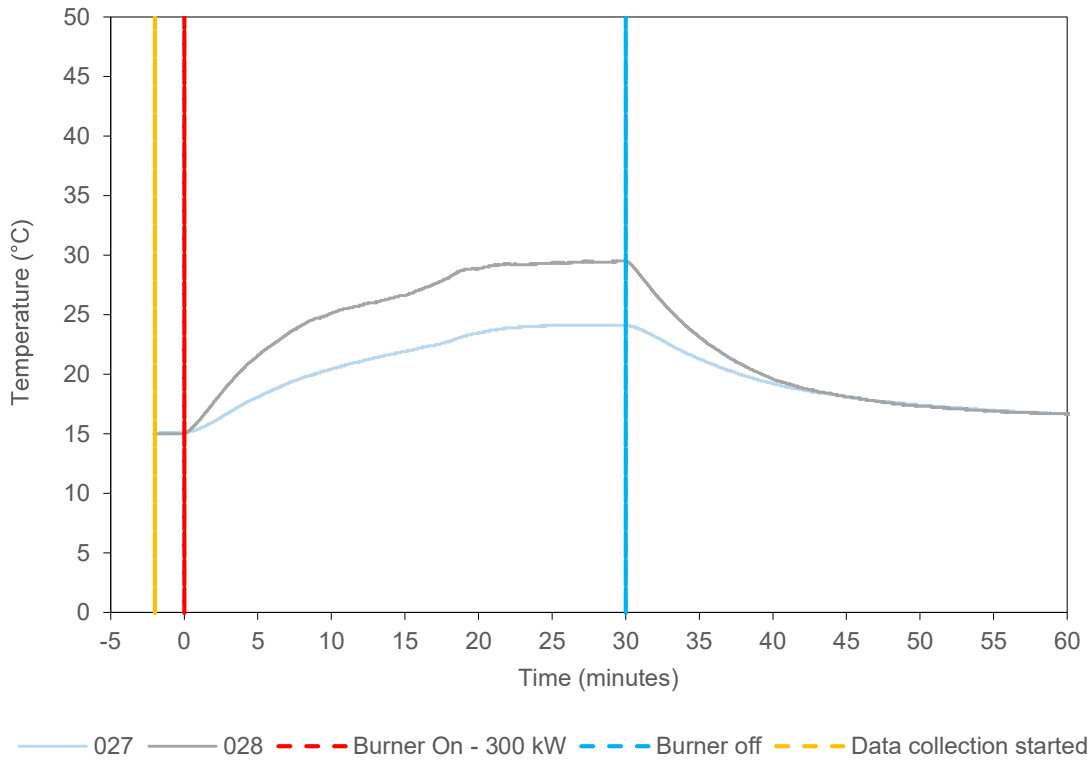


Figure 8 External temperature data collected by plate thermocouples in-line with ACP – away from burner.



Figure 9 Designation of section for the test observations.

Table 4 shows the observations of any significant behaviour of the specimen during the test. Figure 9 shows the panel designation sighted in the observations.

Video recordings were also taken of the test. A copy of the video recording is available upon request from the test sponsor or by contacting Cladding Safety Victoria. The video of the test should be viewed in conjunction the contents of this report.

Table 4 Test observations

Time		Des.	Observation
Min	Sec		
-2	00	All	Data collection started.
0	00	All	The reaction to fire test was started with the burner ignited with a heat output set at 300 kW.
1	06	A1	The paint in the lower area started to burn away, and the panel face was discolouring.
2	09	A1	The lower face of the panel started to deform.
5	18	A2	The lower left edge was discolouring.
7	15	A1	3/4 area of paint was burned away.
8	50	A4	Smoke emitted from the top left corner.
12	56	A1/A2	The vertical joint was smoking.
17	00	A1	The lower part of the panel had opened up.

Time		Des.	Observation
Min	Sec		
17	48	A1	Flaming debris fell to the ground.
18	18	A4	The paint in the lower area started to burn away, and the panel face was discolouring.
19	02	A4	The left side of the panel face started to deform.
21	44	A1	Opened area reached almost 1/2 up panel.
30	00	All	The burner was turned off.
30	24	A1	The bottom part of the panel was still burning.
39	20	A1	Flaming had self-extinguished.
60	00	All	The reaction to fire test was ended

5. Application of test results

5.1 Test limitations

The results of these fire tests may be used to directly assess fire hazard, but it should be recognised that a single test method will not provide a full assessment of fire hazard under all fire conditions.

These results only relate to the behaviour of the specimen of the element of construction under the particular conditions of the test. They are not intended to be the sole criteria for assessing the potential fire performance of the element in use, and they do not necessarily reflect the actual behaviour in fires.

5.2 Variations from the tested specimen

This report details methods of construction, the test conditions and the results obtained when the specific element of construction described here was tested following the procedure outlined in Table 3. Any significant variation with respect to size, construction details, loads, stresses, edge or end conditions is not addressed by this report.

It is recommended that any proposed variation to the tested configuration should be referred to the test sponsor. They should then obtain appropriate documentary evidence of compliance from Warringtonfire or another accredited testing authority.

5.3 Uncertainty of measurements

Because of the nature of reaction to fire testing and the consequent difficulty in quantifying the uncertainty of measurements obtained from a reaction to fire test, it is not possible to provide a stated degree of accuracy of result.

Appendix A Drawings of test assembly

The drawings of the test assembly in Figure 10 to Figure 13 were provided by the representatives of Warringtonfire. Dimensions, unless specified, are in mm. The Figure 12 was modified by Warringtonfire, where the locations of fixing bracket and fire resistant plasterboard were modified. The Figure 13 was also modified by Warringtonfire, where the sealant was removed.

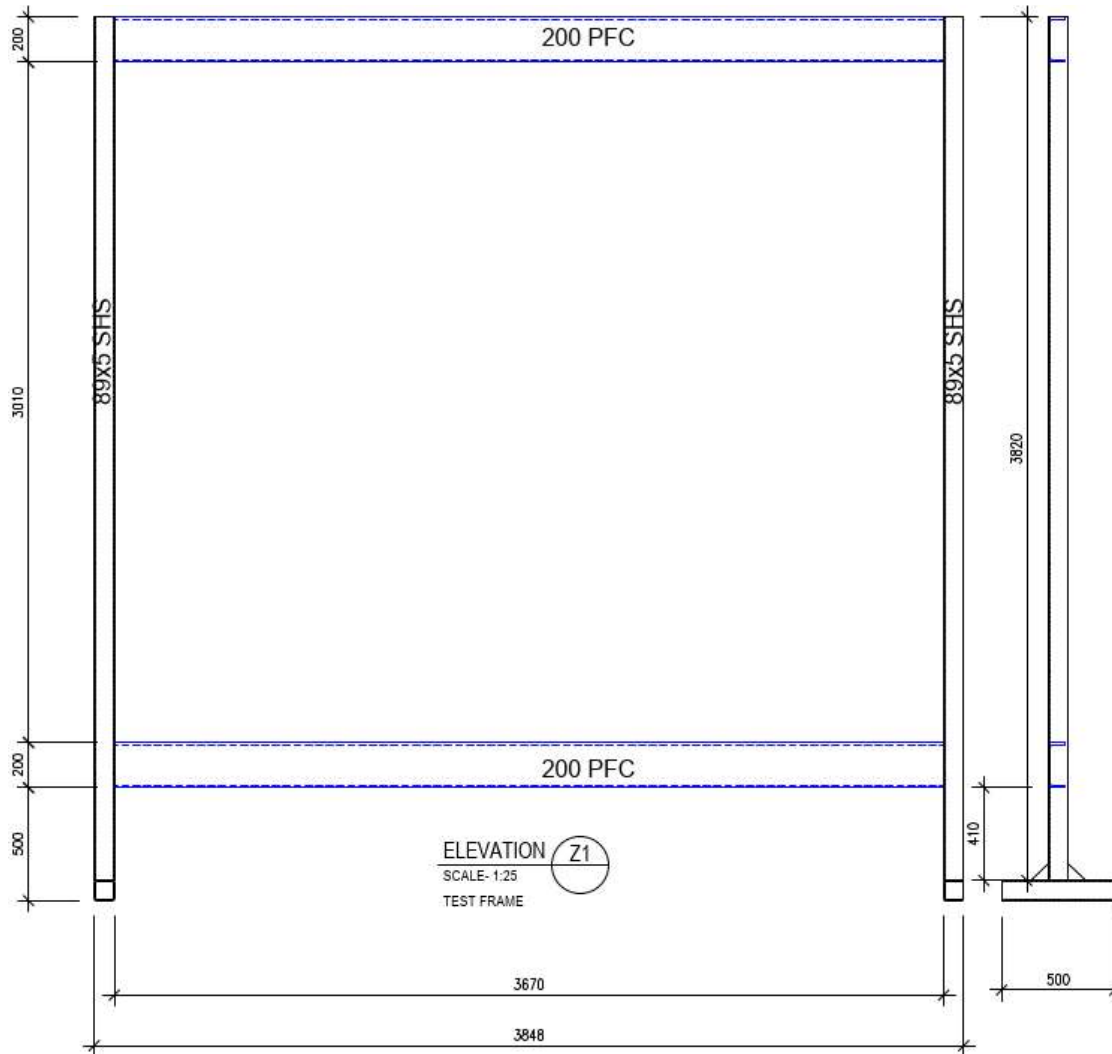


Figure 10 Elevation of rig support

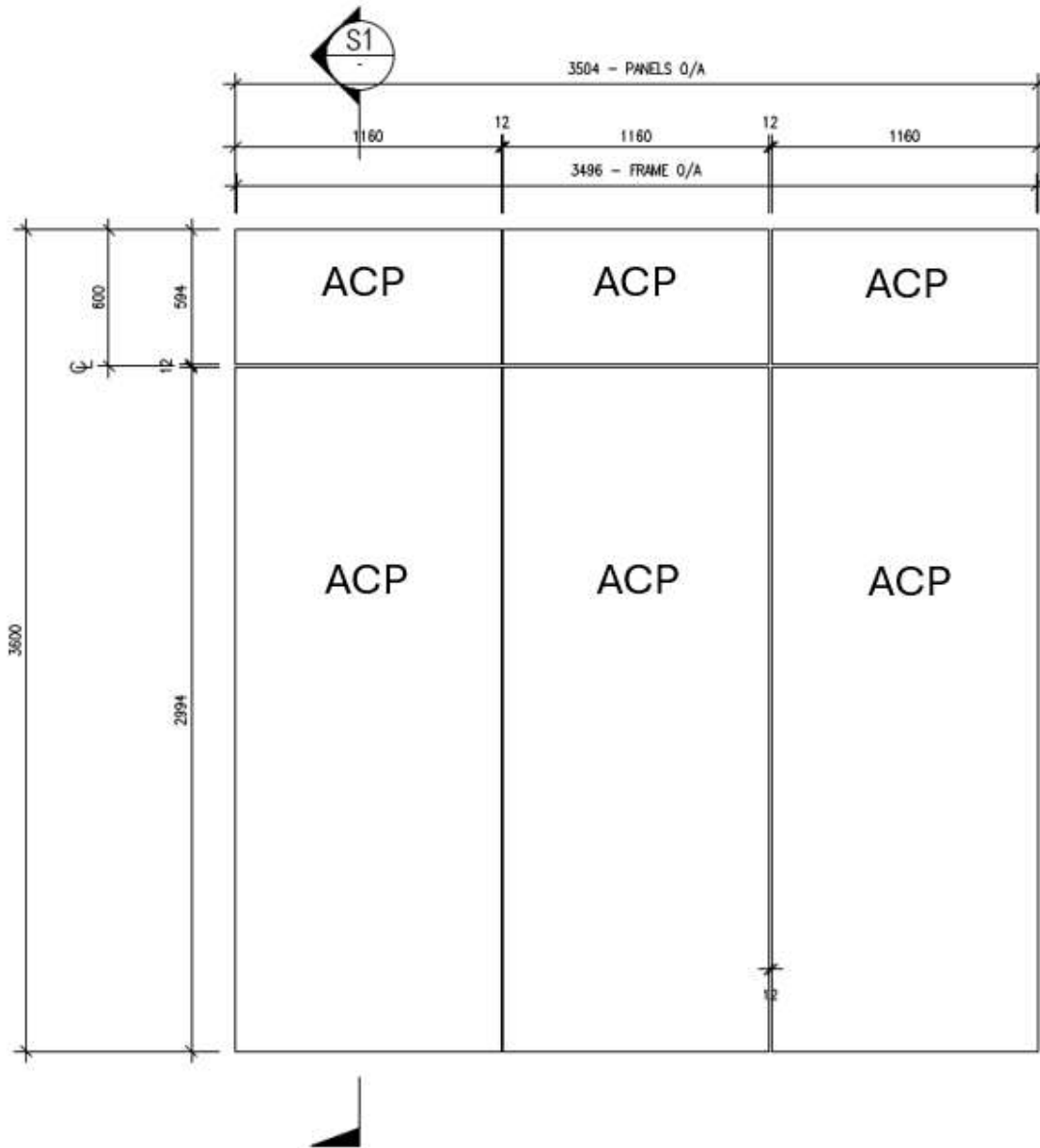


Figure 11 System assembly – Front view

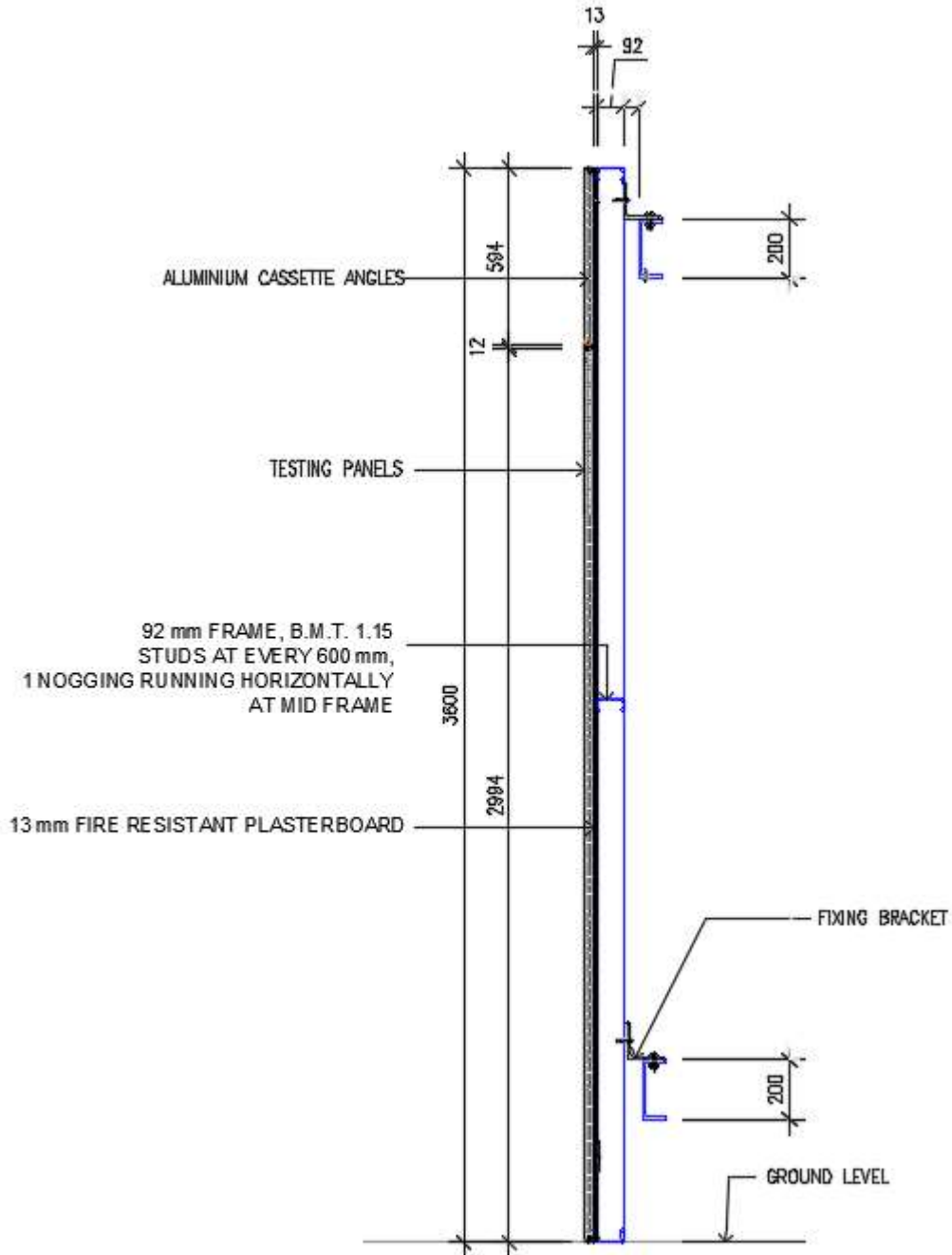


Figure 12 System assembly – vertical cross-sectional view

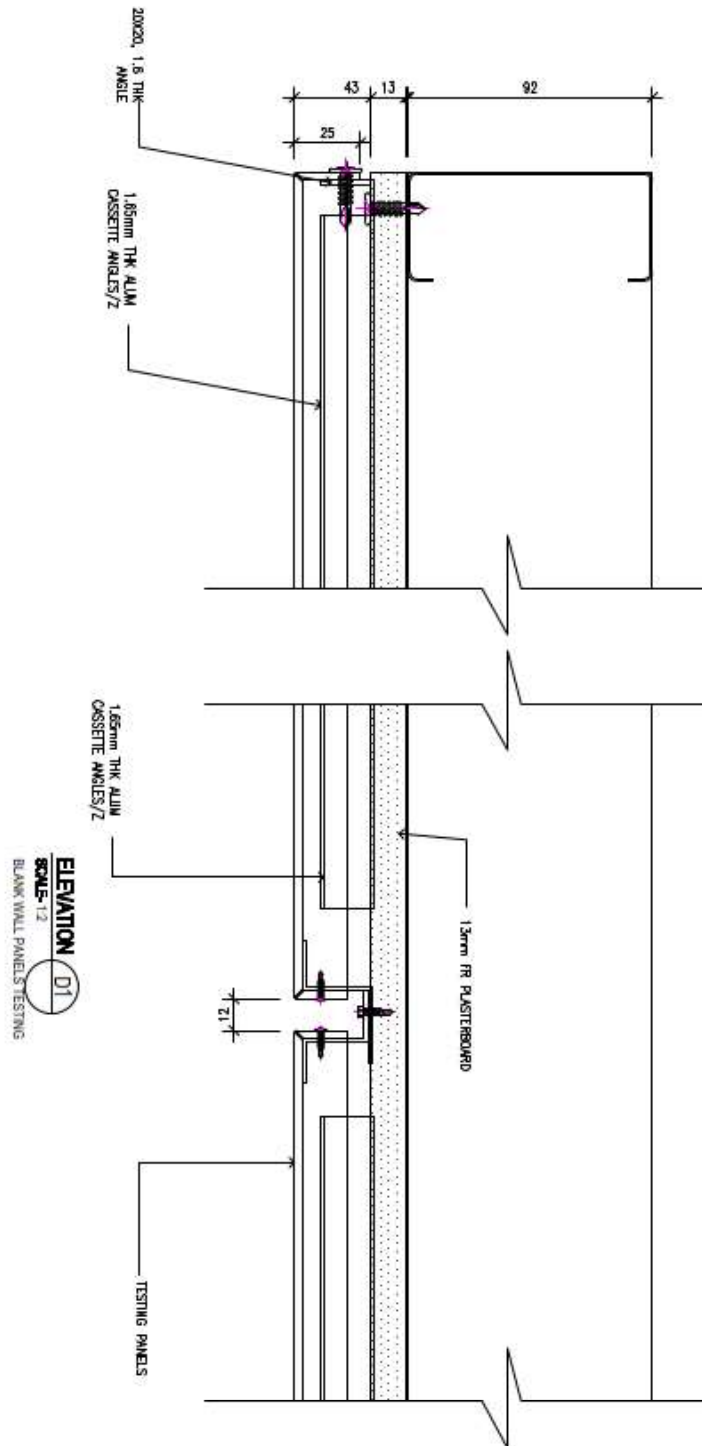


Figure 13 System assembly – vertical cross-sectional view (details)

Appendix B Photographs



Figure 14 The specimen before the reaction to fire test - exposed side

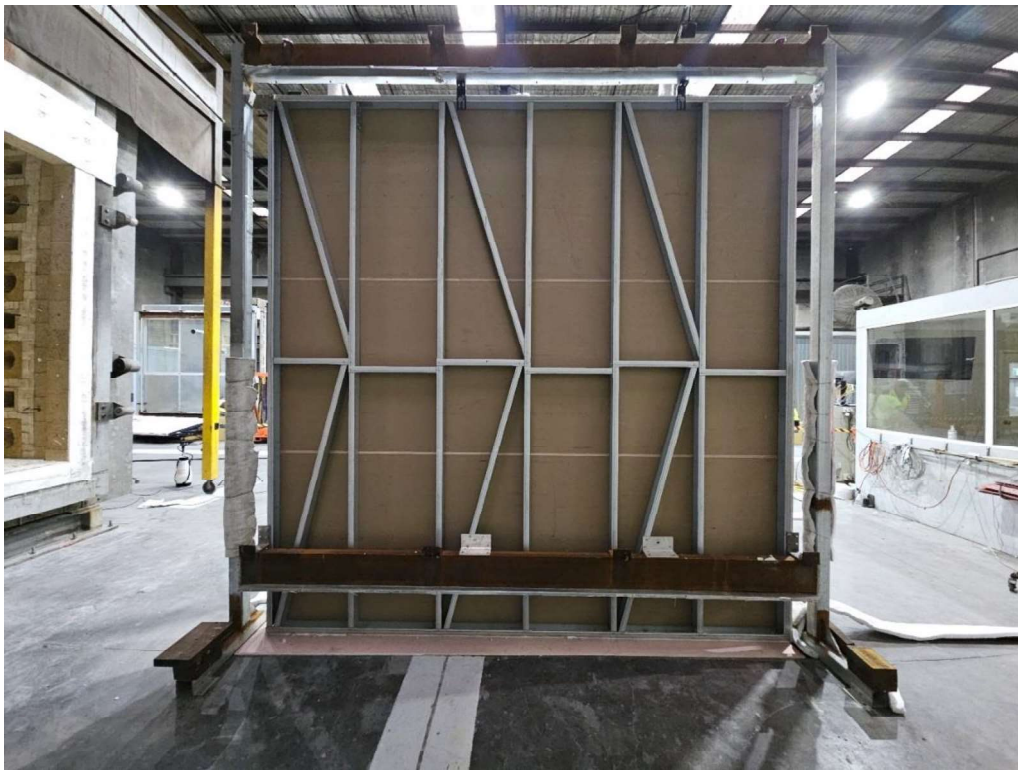


Figure 15 The specimen before the reaction to fire test - unexposed side



Figure 16 The specimen 2 minutes 11 seconds into the test (burner output at 300 kW)



Figure 17 The specimen 5 minutes 25 seconds into the test (burner output at 300 kW)



Figure 18 The specimen 7 minutes into the test (burner output at 300 kW)



Figure 19 The specimen 11 minutes into the test (burner output at 300 kW)



Figure 20 The specimen 15 minutes 9 seconds into the test (burner output at 300 kW)



Figure 21 The specimen 20 minutes into the test (burner output at 300 kW)



Figure 22 The specimen 25 minutes into the test (burner output at 300 kW)



Figure 23 The specimen 30 minutes into the test (burner output at 300 kw)



Figure 24 The specimen 30 minutes 10 seconds into the test (10 seconds after burner off)



Figure 25 The specimen 31 minutes 25 seconds into the test (1 minute and 25 seconds after burner off)



Figure 26 The specimen 34 minutes 32 seconds into the test (4 minutes 32 seconds after burner off)



Figure 27 The specimen 37 minutes into the test (7 minutes after burner off)



Figure 28 The specimen 40 minutes into the test (10 minutes after burner off)



Figure 29 The specimen 45 minutes into the test (15 minutes after burner off)



Figure 30 The specimen 55 minutes into the test (25 minutes after burner off)



Figure 31 The specimen at the end of test



Figure 32 The unexposed side of the specimen at the end of test



WARRINGTONFIRE AUSTRALIA

A Jensen Hughes Company

Warringtonfire Australia Pty Ltd
ABN 81 050 241 524

Perth

Suite 4.01, 256 Adelaide Terrace
Perth WA 6000
Australia
T: +61 8 9382 3844

Canberra

Unit 10, 71 Leichhardt Street
Kingston ACT 2604
Australia
T: +61 2 6260 8488

Melbourne

Level 4, 152 Elizabeth Street
Melbourne Vic 3000
Australia
T: +61 3 9767 1000

Sydney

Suite 802, Level 8, 383 Kent Street
Sydney NSW 2000
Australia
T: +61 2 9211 4333

Brisbane

Suite B, Level 6, 133 Mary Street
Brisbane Qld 4000
Australia
T: +61 7 3238 1700

Melbourne – NATA accredited laboratory

409-411 Hammond Road
Dandenong South Vic 3175
Australia
T: +61 3 9767 1000

General conditions of use

The data, methodologies, calculations and results documented in this report specifically relate to the tested specimen/s and must not be used for any other purpose. This report may only be reproduced in full. Extracts or abridgements must not be published without permission from Warringtonfire.

All work and services carried out by Warringtonfire are subject to, and conducted in accordance with our standard terms and conditions.