



Southern right whale



Who am I?

I am one of Victoria's most loved whales, growing up to 18 metres and 18,000 kilograms, and have some unique features that make me one of the easiest whales to identify.

My body is mostly black, but some of my friends are dark brown or grey, and I have a massive head and belly normally covered in rough white patches called callosities. I have no dorsal fin, which can sometimes make me look like a floating log.

I'm also a special type of whale called a baleen whale, named for my baleen plates; the comb-like teeth I use to filter mouthfuls of seawater for food like plankton and krill.

Scientific name

Eubalaena australis

Conservation status

Endangered

Average life span

70 years

Range/distribution

Sub-antarctic oceans and Australia's southern coastline

Habitat

Coastal waters and oceans

Classification

Marine mammal

I migrate to Australia's southern coastline in winter to breed, give birth, and raise my calf before returning to colder environments.

How can you help me?

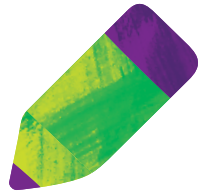
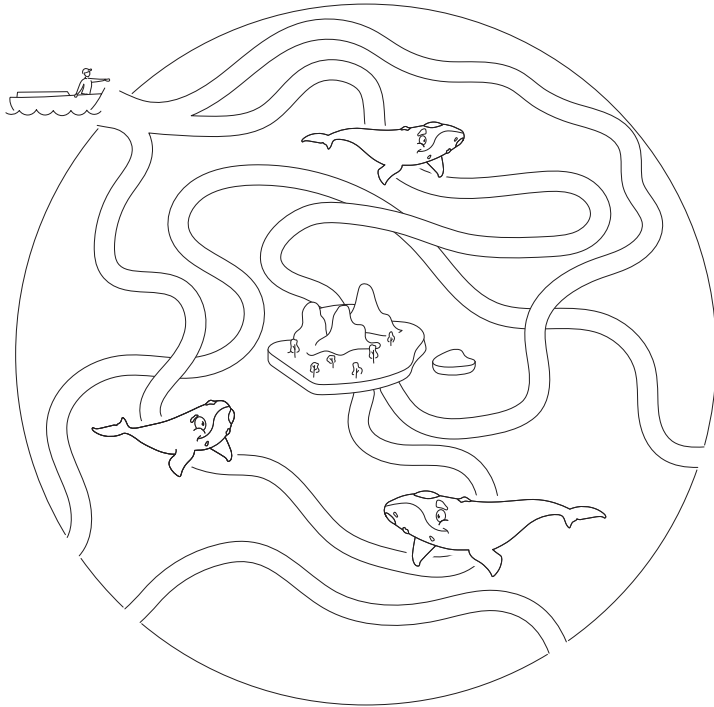
When going out on a boat remember to look out for me! The boat driver must slow down to **five knots** as they get closer and keep their distance. Boats must stay at least **200 metres** and jet skis must stay **300 metres** away – any closer and I might get scared. My calf and I need rest and quiet as we talk in whispers to avoid predators. If you find yourself too close to us, make sure the boat driver turns off the engine to let me pass safely.

**KEEP US SAFE,
GIVE US SPACE**

Southern right whale

Complete the maze and colour it in

Can you help the boat reach its destination without hitting the whales?



Fill in the blanks

A southern right whale can look like a floating ___ because it has no _____.

Hint! The answer is on the first page.



Conservation Regulator Focus Species have been selected to raise awareness about the small changes people can make to protect wildlife in the wild and in captivity.

Find out more at [conservationregulator.vic.gov.au](https://www.conservationregulator.vic.gov.au)