



DRAFT

FISHERMANS BEND

FRAMEWORK

AND PLANNING CONTROLS

Public engagement report

**VICTORIA**

State  
Government

MARCH 2018



## Accessibility

If you would like to receive this publication in an alternative format, please telephone the DELWP Customer Service Centre on 136186, email [fishermansbend@delwp.vic.gov.au](mailto:fishermansbend@delwp.vic.gov.au), or via the National Relay Service on 133 677 [www.relayservice.com.au](http://www.relayservice.com.au). This document is also available on the internet at [www.delwp.vic.gov.au](http://www.delwp.vic.gov.au) and [www.fishermansbend.vic.gov.au](http://www.fishermansbend.vic.gov.au)

## Disclaimer

This publication may be of assistance to you but the State of Victoria and its employees do not guarantee that the publication is without flaw of any kind or is wholly appropriate for your particular purposes and therefore disclaims all liability for any error, loss or other consequence which may arise from you relying on any information in this publication.

© The State of Victoria Department of Environment, Land, Water and Planning 2018

This work is licensed under a Creative Commons Attribution 4.0 International licence. You are free to re-use the work under that licence, on the condition that you credit the State of Victoria as author. The licence does not apply to any images, photographs or branding, including the Victorian Coat of Arms, the Victorian Government logo and the Department of Environment, Land, Water and Planning (DELWP) logo.

To view a copy of this licence, visit <http://creativecommons.org/licenses/by/4.0/>

Cover Image courtesy of Lensaloft Aerial Photography.

Printed by: Department of Environment, Land, Water and Planning

ISBN 978-1-76077-013-6 (Print)

ISBN 978-1-76077-014-3 (PDF/online)

March 2018

# CONTENTS

|                                   |           |
|-----------------------------------|-----------|
| <b>EXECUTIVE SUMMARY</b>          | <b>2</b>  |
| <b>1. INTRODUCTION</b>            | <b>4</b>  |
| 1.1. Purpose of the report        | 4         |
| 1.2. Project context              | 4         |
| <b>2. HOW WE ENGAGED</b>          | <b>5</b>  |
| 2.1 Purpose of engagement         | 5         |
| 2.2 Engagement principles         | 7         |
| 2.3 Engagement activities         | 7         |
| 2.4 Communication activities      | 10        |
| 2.5 Written submissions           | 11        |
| 2.6 Communication materials       | 12        |
| <b>3. WHAT WE HEARD</b>           | <b>14</b> |
| 3.1 Community feedback            | 14        |
| 3.1.1 Transport                   | 14        |
| 3.1.2 Built form and density      | 16        |
| 3.1.3 Sustainability              | 16        |
| 3.1.4 Open space                  | 17        |
| 3.1.5 Community infrastructure    | 18        |
| 3.1.6 Place and identity          | 19        |
| 3.1.7 Other comments              | 19        |
| 3.2 Development industry feedback | 20        |
| 3.3 Business sector feedback      | 20        |
| <b>4. EVALUATION</b>              | <b>21</b> |
| <b>5. CONCLUSION</b>              | <b>21</b> |



## EXECUTIVE SUMMARY

This report summarises the feedback and views on the draft Fishermans Bend Framework and planning controls captured through a series of activities and events held over an eight-week consultation period.

The draft Framework was released on 21 October 2017 for public consultation and feedback followed by the planning controls. Submissions closed on 15 December 2017.

There were 27 face-to-face events held at locations across Fishermans Bend and neighbouring areas. The Taskforce spoke to over 1200 people in person, over 550,000 people were reached online, 251 submissions were received, 12,591 people visited the website, there were 97,654 views of the Fishermans Bend video and 5062 downloads of the draft Framework.

A variety of events were held, including drop-in information sessions, presentations and Q&As, pop-up hubs, submission-writing workshops, presentations at community forums and industry-hosted events, and briefings for the development industry, business sector and the Planning Review Panel.

This report describes in detail what the Taskforce heard from individuals and groups in the community, businesses, the development sector, service providers, not-for-profits, and young people who could be future residents of Fishermans Bend.

The feedback was received around the key themes of transport, built form and density, sustainability, open space, community infrastructure and place and identity.

Comments included:

- Connect the area to the CBD and surrounds, including various comments on the proposed Yarra River crossing.
- Make the area safe and accessible.
- Minimise overshadowing.
- Clarify governance and funding.
- Integrate community services and facilities.
- Provide facilities for all ages and people.
- Utilise sustainable technology.
- Prioritise education, health, aged care and child care.
- Provide affordable housing.
- Prioritise design innovation while respecting history.

The consultation program stimulated public conversation about this transformative project for Melbourne, highlighted by an increased level of engagement through social media.

The feedback will inform the final Framework and planning controls. It will also inform planning on the development of Precinct Plans for Montague, Wirraway, Sandridge, Lorimer and the Employment Precinct.

Submissions made to the independent Fishermans Bend Planning Review Panel do not form part of this report.

# Fishermans Bend draft Framework engagement snapshot

21 October–15 December 2017



- over **1200** people attended
- over **550,000** reached online\*
- we received **251** submissions
- 12,591** website visitors\*\*
- 97,654** Video views
- 5062** draft Framework downloads

\*Facebook, Twitter and LinkedIn impressions  
\*\*Includes Fishermans Bend, Engage Victoria and Planning Panels websites.

**YOU SAID**

- CONNECT THE AREA TO THE CBD AND SURROUNDS
- MAKE THE AREA SAFE AND ACCESSIBLE
- MINIMISE OVERSHADOWING
- CLARIFY GOVERNANCE AND FUNDING
- INTEGRATE COMMUNITY SERVICES AND FACILITIES
- PROVIDE FACILITIES FOR ALL AGES AND PEOPLE
- UTILISE SUSTAINABLE TECHNOLOGY
- PRIORITISE EDUCATION, HEALTH, AGED CARE AND CHILD CARE
- PROVIDE AFFORDABLE HOUSING
- PRIORITISE DESIGN INNOVATION WHILE RESPECTING HISTORY



# 1. INTRODUCTION

## 1.1 PURPOSE OF THIS REPORT

This public engagement report summarises the feedback received during the community and stakeholder engagement activities following the release of the draft Fishermans Bend Framework on 21 October 2017, followed by the release of the planning controls on 1 November 2017.

The feedback will inform the final Fishermans Bend Framework that will be implemented in the planning schemes of the City of Port Phillip and the City of Melbourne. The feedback also informs the development of the Fishermans Bend Precinct Plans.

## 1.2 PROJECT CONTEXT

Fishermans Bend is Australia's largest urban renewal project covering approximately 480 hectares in the heart of Melbourne. It will consist of five precincts across two municipalities – the Cities of Melbourne and Port Phillip – and connects Melbourne's CBD to the bay.

The Fishermans Bend Taskforce was established to lead the planning of the area, comprising of members from the Department of Environment, Land, Water and Planning, the Cities of Melbourne and Port Phillip, and Development Victoria.

In 2015, the Victorian Government launched the recast of planning for Fishermans Bend. The Fishermans Bend Recast Vision was released for public consultation with the community, industry, stakeholders and local government in May 2016 and the updated Vision was released in September 2016.

The next stage of consultation occurred on the development of the draft Fishermans Bend Framework in November 2016 with a series of drop-in sessions and workshops held to gain feedback on key elements of the Framework.

The engagement enabled the Taskforce to test and validate key ideas and priorities emerging from the work underway on the Framework. The feedback received supported the key ideas and principles for each key theme and general direction of the strategies.

In tandem with broad community consultation, the Taskforce engaged with the development sector and key industry groups to better understand investment attractors for Fishermans Bend.

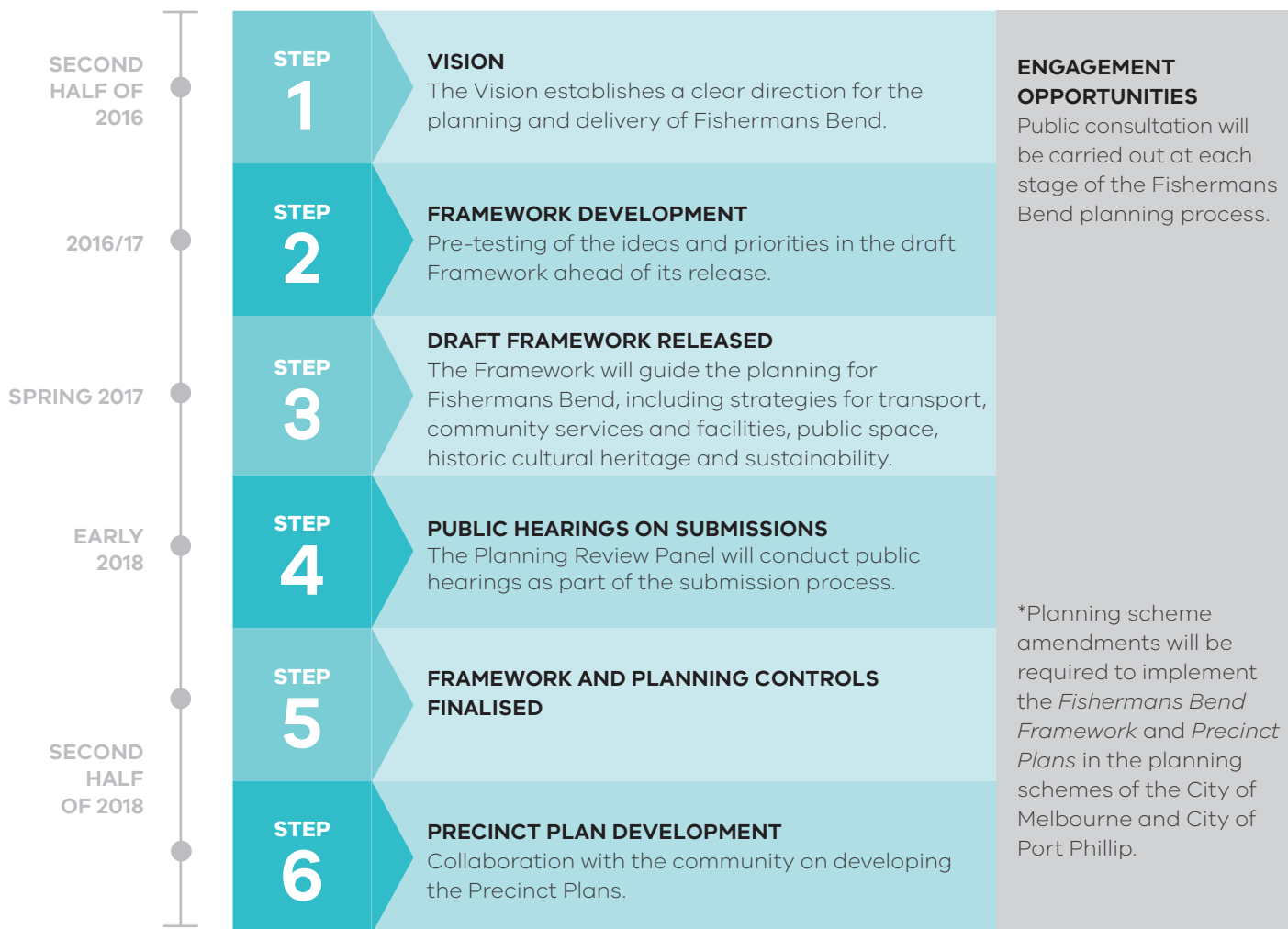
In addition, workshops were held across key areas of housing affordability, community infrastructure, sustainability and workforce planning to reality test planning mechanisms and policies in the draft Framework.

A series of evidence-based reports and studies were produced to inform the development of the draft Framework and a suite of planning controls were prepared to realise the objectives and strategies in the draft Framework.

In addition to community input, a wide range of expertise has fed into the development of the draft Framework truly reflecting its significance as a Whole of Government project. This includes input from the Fishermans Bend Ministerial Advisory Committee, the Cities of Port Phillip and Melbourne, State Government departments, authorities and agencies.

Following the consultation, the finalised Framework and planning controls will guide the transition of Fishermans Bend into a connected, liveable, prosperous, inclusive, healthy and environmentally sustainable place.

## Fishermans Bend planning – consultation approach



## 2. HOW WE ENGAGED

### 2.1 PURPOSE OF ENGAGEMENT

The community engagement program sought to:

1. Clearly explain the key elements of the draft Framework and the submission process.
2. Promote and encourage people to make a submission.
3. Provide a range of opportunities to engage through a vast range of events that enable broad participation.
4. Raise awareness about the opportunity that Fishermans Bend presents by showcasing the catalyst projects.
5. Demonstrate that previously received feedback was considered in the draft Framework and planning controls.



The engagement approach incorporated the ‘Inform, Consult, Involve’ elements of the International Association for Public Participation (IAP2) Spectrum (see Table 1). As the Fishermans Bend project moves to the next phase of precinct planning, there will be more opportunities for collaboration.

**Table 1: IAP2 spectrum of public participation**

|                    | <b>PUBLIC PARTICIPATION GOAL</b>   | <b>PROMISE TO THE PUBLIC</b>   |
|--------------------|--|--|
| <b>INFORM</b>      | To provide the public with balanced and objective information to assist them in understanding the problem, alternatives, opportunities and/or solutions. | We will keep you informed.   |
| <b>CONSULT</b>     | To obtain public feedback on analysis, alternatives and/or decisions.  | We will keep you informed, listen to and acknowledge concerns and aspirations, and provide feedback on how public input influenced the decision. We will seek your feedback on drafts and proposals. |
| <b>INVOLVE</b>     | To work directly with the public throughout the process to ensure that public concerns and aspirations are consistently understood and considered.       | We will work with you to ensure that your concerns and aspirations are directly reflected in the alternatives developed and provide feedback on how public input influenced the decision.            |
| <b>COLLABORATE</b> | To partner with the public in each aspect of the decision including the development of alternatives and the identification of the preferred solution.    | We will work together with you to formulate solutions and incorporate your advice and recommendations into the decisions to the maximum extent possible.   |
| <b>EMPOWER</b>     | To place final decision making in the hands of the public.   | We will implement what you decide.   |



## 2.2 ENGAGEMENT PRINCIPLES

Community consultation on Fishermans Bend is based on the following principles:

- **Engage and inspire** wider Melbourne about the potential of the area as well as seek the international attention the project warrants.
- **Acknowledge and build** on the community input at each state of the engagement.
- **Work collaboratively** with the diversity of views and interests by actively engaging with the range of stakeholders who are affected by and should inform the planning process.
- **Respect** the knowledge and aspirations of existing community members
- **Acknowledge** the voice of future communities of Fishermans Bend and their role in shaping the place in which they will live and work.
- **Enunciate** clear policy positions on the fundamentals of the project (e.g. transport, business and jobs, sustainability, liveability, density and population growth).
- **Facilitate** well-informed dialogue and decisions from a strong evidence base.
- **Build understanding** of and confidence in the project outcomes through accurate and timely information, transparent decision-making and mechanisms for implementation.
- **Flexible and creative** by ensuring communication is responsive and evolves as the precincts and community evolve.

## 2.3 ENGAGEMENT ACTIVITIES

Engagement on the draft Framework occurred through 27 face-to-face activities from 25 October to 15 December 2017 in venues across Fishermans Bend and surrounds. Over 1200 participants were involved in events and activities including pop-up public events, drop-in sessions, formal presentations followed by Q&A sessions, business and development industry briefings, workshops and public forums.

### 2.3.1 Information sessions (pop-ups, drop-ins, displays, presentations and Q&A)

Drop-in sessions were held at various locations throughout Fishermans Bend, providing the community with the opportunity to view the displays and speak to Taskforce members about the draft Framework. The sessions were supported by representatives from agencies such as Parks Victoria, EPA, Victorian School Building Authority and the Metropolitan Waste and Resource Recovery Group.

Taskforce members delivered a number of presentations and Q&A sessions throughout the engagement period at resident community forums, residents' meetings and peak body events.

A total of 1266 people attended these sessions throughout the engagement period.

### 2.3.2 Facilitated workshops

Two facilitated workshops were held bringing together a diverse group of people and community representatives.

A total of 50 participants attended the deliberative discussions on the draft Framework and had the opportunity to discuss issues, opportunities, constraints and benefits of the draft Framework. The groups worked collaboratively to reach



an informed position and shape their feedback into a formal submission for consideration.

### 2.3.3 Development industry sessions

Two development industry sessions were held with 65 participants in attendance. Participants were informed of the content of the draft Framework and planning controls and had the opportunity to exchange views and have their questions answered.

### 2.3.4 Business sessions

Two business briefings were held in November at the Bega headquarters, located in the Fishermans Bend Employment Precinct. The briefings were attended by 21 participants representing a range of local businesses, industry and local interest groups. The Taskforce delivered a presentation detailing key aspects of the draft Fishermans Bend Framework and answered questions.

### 2.3.5 Events and activities program

The events were held on the following dates:

|                                  |   |
|----------------------------------|---|
| <b>Wednesday<br/>25 October</b>  | <b>12.30–2pm</b> – Property Council Victoria business lunch with presentation and panel discussion.                                   |
|                                  | <b>6–8pm</b> – Docklands Community Forum run by the City of Melbourne at Library at the Dock, Docklands.                              |
| <b>Tuesday<br/>31 October</b>    | <b>6.30–7.30pm</b> – Briefing of Yarra’s Edge boat berth leasees including presentation and Q&A session at Docklands.                 |
| <b>Thursday<br/>2 November</b>   | <b>4–6pm</b> – Community drop-in session at North Port Oval, Port Melbourne.  |
|                                  | <b>6–8pm</b> – City of Port Phillip Fishermans Bend Community Forum at North Port Oval, Port Melbourne.                               |
| <b>Friday<br/>3 November</b>     | <b>8am</b> – Pop-up event at South Melbourne market with display and Taskforce staff.   |
| <b>Wednesday<br/>8 November</b>  | <b>10.30am–2.30pm</b> – Pop-up event at University of Melbourne Farmers Market with display and Taskforce staff.                      |
|                                  | <b>6.30–8pm</b> – Briefing for Yarra’s Edge residents including presentation and Q&A session at Library at the Dock, Docklands.       |
| <b>Friday<br/>10 November</b>    | <b>10am–1pm</b> – Public briefing of the Planning Review Panel at Planning Panels Victoria.   |
| <b>Wednesday<br/>15 November</b> | <b>10am–12.30pm</b> – UDIA hosted half day urban renewal conference focused on Fishermans Bend including presentation and discussion. |
| <b>Sunday<br/>19 November</b>    | <b>11am–1pm</b> – Community drop-in session at North Port Oval, Port Melbourne.   |
|                                  | <b>1.30–3pm</b> – Community presentation and Q&A session at North Port Oval, Port Melbourne.  |

|                                  |  |
|----------------------------------|--|
| <b>Tuesday<br/>21 November</b>   | <b>6–8pm</b> – Business briefing for businesses in Fishermans Bend with presentation and Q&A held at the Bega Headquarters, Port Melbourne.              |
| <b>Wednesday<br/>22 November</b> | <b>9–11am</b> – Development industry session with presentation and Q&A held at North Port Oval, Port Melbourne.  |
|                                  | <b>11am–1pm</b> – Community drop-in session at North Port Oval, Port Melbourne.  |
|                                  | <b>4–6pm</b> – Community drop-in session at North Port Oval, Port Melbourne.   |
|                                  | <b>6–9pm</b> – Facilitated workshop at North Port Oval, Port Melbourne.  |
| <b>Thursday<br/>23 November</b>  | <b>7.30am</b> – ARUP event hosting a Fishermans Bend breakfast with presentation and panel discussion.   |
|                                  | <b>4.30–6.30pm</b> – Community drop-in session at South Melbourne Town Hall Community Hub.   |
|                                  | <b>6.30–8pm</b> – Presentation and Q&A held at South Melbourne Town Hall Community Hub.  |
| <b>Friday<br/>24 November</b>    | <b>10am–1pm</b> – Public briefing of the Planning Review Panel at Planning Panels Victoria.  |
| <b>Sunday<br/>26 November</b>    | <b>9am–4pm</b> – Port Melbourne Primary School fete community display with Taskforce staff.  |
| <b>Tuesday<br/>28 November</b>   | <b>7–8.30am</b> – Business briefing breakfast for businesses in Fishermans Bend with presentation and Q&A held at the Bega Headquarters, Port Melbourne. |
|                                  | <b>9–11.30am</b> – Development industry session with presentation and Q&A held at Fishermans Bend Taskforce office.                                      |
| <b>Wednesday<br/>29 November</b> | <b>4–6pm</b> – Community drop-in session at Life Saving Victoria, Port Melbourne.  |
|                                  | <b>6–9pm</b> – Facilitated workshop at Life Saving Victoria, Port Melbourne.   |
| <b>Tuesday<br/>5 December</b>    | <b>8am</b> – Property Council breakfast with presentation and panel discussion.  |



## 2.4 COMMUNICATION ACTIVITIES

Communication materials were developed to enhance community understanding of the draft Framework, explain its key elements and support the public presentations provided by the Taskforce. These included a series of fact sheets, display corflutes and banners, and a video to bring the draft Framework to life.

The public engagement activities were promoted through:

- digital advertising
- social media
- Fishermans Bend website
- displays at town halls and libraries
- public notice advertising
- direct invitation via email
- letters to landowners, occupiers and community providers
- e-newsletters.

### Digital engagement

The Fishermans Bend website was a key portal for information on the draft Framework, background reports and planning controls. It also linked to the submissions website. All the engagement activities and events were listed with the opportunity to register for events online.

During the engagement period, 11,287 people visited the Fishermans Bend website, more than double the amount of traffic seen in the previous Vision consultation. 5062 people downloaded the draft Framework, a threefold increase on Vision downloads in the previous consultation.

The Taskforce was proactive on social media, reaching a combined audience of over half a million people. The *Fishermans Bend – a plan for the future* video was viewed over 97,000 times.

### Displays at town halls and libraries

Displays of the draft Framework, background documents and planning controls were set up at each event, Cities of Port Phillip and Melbourne council offices and seven libraries including Melbourne Town Hall, Boyd Community Hub, Library at the Dock, City Library, State Library of Victoria, St Kilda Town Hall, St Kilda Library, South Melbourne Town Hall, Port Melbourne Town Hall, Port Melbourne Library and Port Phillip Library Service.



Examples of tweets from Fishermans Bend

### **Public notice in major newspapers**

Public notices appeared in the Herald Sun and The Age plus six key local publications advising of the release of the draft Framework and planning controls, outlining the engagement sessions and public briefings of the Planning Review Panel. The publications included:

- Herald Sun, 28 October 2017
- The Age, 28 October 2017
- Caulfield Port Phillip Leader, 31 October 2017
- Stonnington Leader, 31 October 2017
- Weekly Review South East, 1 November 2017
- Weekly Review City, 1 November 2017
- Docklands News, 1 November 2017
- Southbank News, 8 November 2017.

### **Email and letters**

Emails were sent to a range of stakeholders informing them of the draft Framework release and engagement activities. Letters were sent to 14,505 landowners and occupiers in Fishermans Bend and neighbouring surrounds.

Correspondence was also sent to relevant authorities including energy providers, telecommunications providers, water providers, roads and transport, Victorian government departments and authorities, local government, housing and residents' associations, planning advocacy groups, community groups and history and heritage advocacy groups.

### **e-newsletters**

Five Fishermans Bend e-newsletters were sent to our subscribers throughout the consultation period announcing the release of the draft Framework and planning controls, providing information on the submission process, engagement activities and reinforcing the deadline for submissions.

Subscribers to the Fishermans Bend e-newsletter increased by 22.6 per cent during the consultation period, with e-newsletters going out to a total of 4471 recipients.

### **Translation service**

In line with previous consultation, the Fishermans Bend Taskforce continued a dedicated interpreter service phone number for people to access a translation service if required. This was promoted on the website, and across all publications, fact sheets and other materials during the engagement program.

### **Community enquiries**

There were a number of ways for the community to make enquiries through the Victorian Government Contact Centre, via the DELWP planning customer service email or via the Fishermans Bend email.

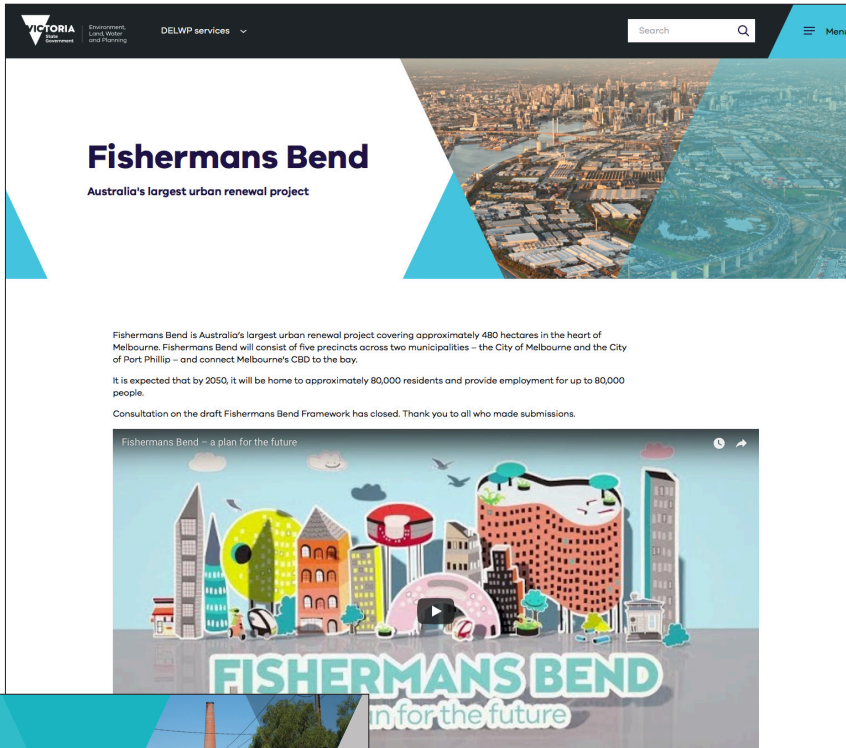
## **2.5 WRITTEN SUBMISSIONS**

The submission process was a key element to the consultation program and submissions from the public were actively encouraged in all engagement activities. The Fishermans Bend Planning Review Panel was established under the auspices of Planning Panels Victoria to receive submissions and conduct public hearings. The Planning Review Panel will hear submissions from March 2018.



## 2.6 COMMUNICATION MATERIALS

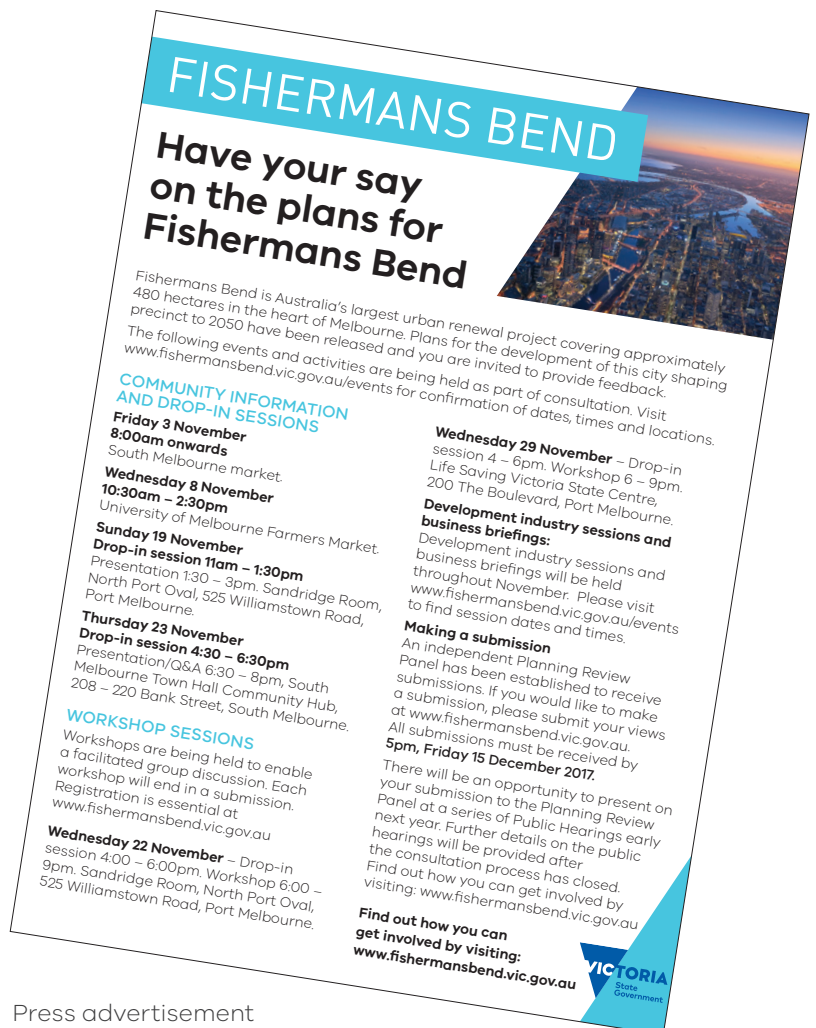
A sample of the many communication materials produced for the engagement program.



Fishermans Bend – a plan for the future video



Fact sheets



Press advertisement

# FISHERMANS BEND TO 2050



80,000 residents



80,000 jobs



- Upgrades to bus connections
- Planning for future tram connections
- Planning for future train connections
- Cycling links throughout
- New parks
- Primary and Secondary Schools
- Range of health, arts and sports hubs
- Affordable housing
- Australia's largest Green Star - Community

[www.fishermansbend.vic.gov.au](http://www.fishermansbend.vic.gov.au)



Transport display banner

# FISHERMANS BEND CATALYST PROJECTS

## FERRARS STREET EDUCATION AND COMMUNITY PRECINCT

Work to transform the Ferrars Street Education and Community Precinct is well underway. The precinct will include a new primary school, community facilities, community park, improved streetscapes and tram and intersection upgrades in the Montague precinct of Fishermans Bend.



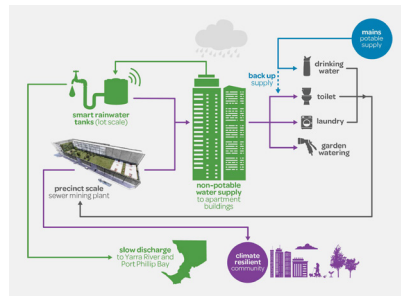
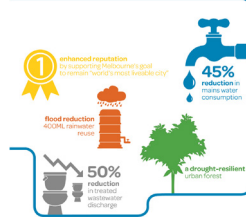
Jointly purchased with the City of Port Phillip, the park will provide the growing Fishermans Bend community and school with much needed open space to support a healthy and active lifestyle.



## SEWER MINING TREATMENT PLANT

The proposed sewer mine by South East Water in Fishermans Bend will supply Class A Recycled water to all areas of Fishermans Bend via a third pipe. Reticulated recycled water supplied throughout the precincts will supplement rainwater, creating a drought-free green landscape as well as achieving flooding and water saving outcomes:

These outcomes will be delivered by a combination of measures within each building - smart rainwater tanks - and catalytic precinct wide infrastructure - the sewer mine and third pipe system.



## AUSTRALIA'S LEADING DESIGN, ENGINEERING AND TECHNOLOGY DISTRICT

The General Motors Holden (GMH) site redevelopment is a key catalyst project for Fishermans Bend and Melbourne to develop Australia's leading design, engineering and technology district.

The Government's strategic purchase of this site, will bring together industry leaders in the cutting edge areas of aerospace, defence, marine design, automotive design, education and research to grow our design, engineering and technology capital and create thousands of high value jobs.

It will:

- > attract private sector investment building skills for the jobs of the future
- > secure local employment while expanding the city's global reach
- > be home to students and specialised businesses of different scales and types
- > create a range of jobs that require a range of skill sets and educational backgrounds
- > promote the reuse of existing buildings
- > create an area with vibrant street activity, great public spaces and services



Catalyst projects display banner



### 3. WHAT WE HEARD

The table below summarises what the Taskforce heard at the engagement events including drop-in sessions, workshops, pop-ups, and community, development industry and business sessions. It does not include feedback from submissions received by Planning Panels Victoria. Submissions will be considered by the Fishermans Bend Planning Review Panel.

#### 3.1 COMMUNITY FEEDBACK

##### 3.1.1 TRANSPORT

| Category                | Feedback summary   |
|-------------------------|--|
| Connectivity            | <ul style="list-style-type: none"> <li>• Desire for links to community facilities and to surrounding suburbs including Port Melbourne, St Kilda, South Melbourne and Newport.</li> <li>• Feedback received that freeways are important to connectivity.</li> </ul>   |
| Buses                   | <ul style="list-style-type: none"> <li>• Desire to see bus services for specialty purposes including transport to and from sporting facilities and the Employment Precinct.</li> <li>• Suggestions to consider a circular bus service within the immediate precinct and an electric bus network.</li> </ul>  |
| Tram connections        | <ul style="list-style-type: none"> <li>• Feedback received that the proposed tram alignment will make connections through Fishermans Bend easier.</li> <li>• Desire for early delivery of tram infrastructure.</li> <li>• Comments made regarding the height, dimensions, operational structure and location of proposed Yarra River crossing.</li> <li>• Comments made about the distance to tram stops, speed and frequency of trams, impact to existing routes, new routes, late night service and free tram service to the Employment precinct to encourage locals to use public transport.</li> </ul> |
| Metro rail              | <ul style="list-style-type: none"> <li>• Further details sought, including on timing of delivery, station location and routes.</li> </ul>  |
| Local roads and parking | <ul style="list-style-type: none"> <li>• Comments made to improve diversion of traffic from local streets. Concern with noise and heavy vehicles.</li> <li>• Suggestions made for more parking around community hubs and sporting facilities.</li> <li>• Desire to see more parking allocation per residential apartment.</li> </ul>   |



| Category                      | Feedback summary   |
|-------------------------------|--|
| Arterial/route connections    | <ul style="list-style-type: none"> <li>• Desire for improved road access and connections to the eastern and western suburbs, with comments made that the changes to the existing road network would impact trucks on Lorimer Street.</li> </ul>  |
| Freight connection            | <ul style="list-style-type: none"> <li>• Comments made to consider the impact of future road and rail freight connections and urban amenity, and the height of the proposed rail/freight bridge.</li> <li>• Comments made about the truck traffic on Lorimer Street and desire to see alternative freight links.</li> </ul>  |
| Cycling and pedestrian access | <ul style="list-style-type: none"> <li>• Comments on cycling paths and tracks, proposed routes, cyclist safety and request for adequate bicycle racks with comments made about the height of the pedestrian/cycle link parallel to the Bolte Bridge.</li> </ul>  |
| Water transport               | <ul style="list-style-type: none"> <li>• Feedback requested water transport be considered including ferries.</li> <li>• Suggestion to move containers by water.</li> </ul>   |
| Congestion                    | <ul style="list-style-type: none"> <li>• Feedback received to consider the impact on roads from the potential increase in traffic and the environmental impact from the expected population growth in the area.</li> <li>• Comments made about the impact to local residents from truck traffic on Lorimer Street.</li> <li>• Desire for enough transport to cater for a larger population.</li> </ul>         |
| Safety and accessibility      | <ul style="list-style-type: none"> <li>• Discussion on safety and access for pedestrians and road users, including the safety of older residents, school children and those with special needs.</li> <li>• Feedback that access to hospitals and community services should be a priority.</li> <li>• Suggestion for flexible public transport operating hours.</li> </ul>                                      |
| Other                         | <ul style="list-style-type: none"> <li>• General comments encouraging all modes of transport including walking.</li> <li>• Comments regarding the development of early infrastructure, establishing transport recharge stations, consideration of car sharing services and changing travel behaviour.</li> <li>• Questions received about the proposed targets and assumptions about transport use.</li> </ul> |



### 3.1.2 BUILT FORM AND DENSITY

| Category  | Feedback summary  |
|---|---|
| Floor Area Ratios (FAR) and Floor Area Uplift (FAU) | <ul style="list-style-type: none"> <li>Comments received on varying the heights, floor area ratios and setbacks in different precincts.</li> <li>Mixed comments received regarding building heights being too high, or not high enough.</li> </ul>                                      |
| Overshadowing/ heights                              | <ul style="list-style-type: none"> <li>Concerns raised about site specific overshadowing and recommendations for single storey accommodation and restricting building heights.</li> <li>Comments expressed support for higher buildings to be located near public transport.</li> </ul> |
| Dwelling size                                       | <ul style="list-style-type: none"> <li>Comments made about dwelling size with emphasis on family sized apartments, establishing minimum apartment sizes and number of windows, and distance between apartments.</li> <li>Feedback indicated support for housing diversity.</li> </ul>   |
| Density   | <ul style="list-style-type: none"> <li>Concerns raised that some of the approved developments are too dense.</li> <li>Support expressed for developments with larger buildings in higher density areas.</li> </ul>  |
| Permits   | <ul style="list-style-type: none"> <li>Comments received about existing permits, current applications, permit approval and expiry extensions.</li> </ul>  |
| Planning controls/ process                          | <ul style="list-style-type: none"> <li>Questions received about the planning controls and the planning process seeking further information on how the planning process works.</li> </ul>  |
| Design  | <ul style="list-style-type: none"> <li>Suggestions made on creating outdoor areas, light-filled open space and modern structures, with high rises designed to have an open feel.</li> <li>Comments made to consider safety as part of the design of buildings.</li> </ul>               |
| Other   | <ul style="list-style-type: none"> <li>Other feedback included effects on the local housing market, a mix of residential developments to cater for different demographics, plot areas, flooding impact in the area and geotechnical conditions.</li> </ul>                              |

### 3.1.3 SUSTAINABILITY

| Category                      | Feedback summary  |
|-------------------------------|---|
| Solar and renewable resources | <ul style="list-style-type: none"> <li>Suggestions made to use solar panels on all buildings, consider wind turbines at Westgate Park, and increase ventilation requirements to reduce energy use.</li> </ul> |
| Green Star rating             | <ul style="list-style-type: none"> <li>Comments made regarding Green Star buildings with suggestions to consider a higher star rating.</li> </ul>   |

| Category                         | Feedback summary   |
|----------------------------------|--|
| Groundwater and water management | <ul style="list-style-type: none"> <li>• There was interest in general groundwater contamination, water recycling and improved waste management with comments made to integrate waste and water recovery with existing development.</li> </ul>   |
| Recycle                          | <ul style="list-style-type: none"> <li>• Broad support for increased recycling across the precinct and encouraging people to take organic waste to a compost farm.</li> </ul>  |
| Planning                         | <ul style="list-style-type: none"> <li>• Questions were received regarding the planning scheme, the principles underlying the framework, the use of sustainable materials for building, and suggestions made to encourage green walls, rooftop gardens and community gardens.</li> </ul> |
| Other                            | <ul style="list-style-type: none"> <li>• Support for the approach to sustainability at Fishermans Bend.</li> <li>• Comments made about the area growing too quickly, valuing environmental assets and the impact of accommodating an increased population.</li> </ul>                    |

### 3.1.4 OPEN SPACE

| Category                                    | Feedback summary   |
|---|--|
| Existing facilities and sports grounds      | <ul style="list-style-type: none"> <li>• Feedback received on expanding the use of existing facilities, integrating community facilities, and maximising the use of Westgate Park. There were comments on JL Murphy Reserve and the importance it has in the area, as well as implications for open space in neighbouring areas and sports facilities.</li> </ul>  |
| Future green spaces, plants and landscaping | <ul style="list-style-type: none"> <li>• Suggestions made on future green spaces to include tree canopy cover, gym equipment, biodiversity and opening up the river frontage at Westgate Park.</li> </ul>  |
| Uses of open space                          | <ul style="list-style-type: none"> <li>• Comments made about parkland including the consideration of pocket parks, fitness parks, dog parks, dark parks for nocturnal animals and the retention of existing parks.</li> <li>• Desire to create playgrounds for families, consideration for a community swimming pool and creating recreational areas across all precincts including parks in the employment precinct.</li> <li>• Significant support for open space as a priority in the draft Framework.</li> <li>• Desire to see open space that it is purposeful, meets the growing population, is accessible to all and is multi-use.</li> </ul> |
| Social interactions                         | <ul style="list-style-type: none"> <li>• Comments made on the importance of social interactions.</li> <li>• Suggestion for regular free events and activities for older residents to encourage socialising and establish a community spirit.</li> </ul>  |



| Category                    | Feedback summary  |
|-----------------------------|---|
| Accessibility and proximity | <ul style="list-style-type: none"> <li>• Suggestions included accessibility and proximity to open space with comments made to consider parking, short walks to parks and services, and increasing safety through security lighting.</li> </ul>                                  |
| Other                       | <ul style="list-style-type: none"> <li>• Desire to establish community market gardens, gain river access, a wider range of recreational facilities, more cycling and walking paths, open space co-located with community facilities, shopping centres and arts hubs.</li> </ul> |

### 3.1.5 COMMUNITY INFRASTRUCTURE

| Category  | Feedback summary  |
|-----------|---|
| Design    | <ul style="list-style-type: none"> <li>• Suggestions made on community infrastructure design to consider all ages and people, co-design, fit for purpose facilities, multi-function complexes, market precincts and creating shopping centres with longer trading hours.</li> <li>• Desire to see easy access to facilities and a village aspect to living in the area.</li> </ul>  |
| Aged care | <ul style="list-style-type: none"> <li>• Desire for aged care facilities and services to be established and suggestions made to create incentives for development of these services.</li> </ul>   |
| Education | <ul style="list-style-type: none"> <li>• Feedback received on the number of public and secondary schools including location, mix of public and private schools, and catering for the population of 80,000 residents.</li> <li>• Desire for schools to be located near open space.</li> <li>• Support expressed for versatile, flexible facilities.</li> <li>• Questions received about tertiary education and establishing public libraries within Fishermans Bend.</li> <li>• Support for a focus on education and knowledge sectors.</li> </ul> |
| Health    | <ul style="list-style-type: none"> <li>• There was interest in health services ensuring there were adequate services and access for all residents. Specific mention was made of medical centres, mental health services, specialist clinics and ensuring there is a mix of public and private services.</li> </ul>  |
| Hubs      | <ul style="list-style-type: none"> <li>• The concept of 'hubs' was discussed with questions raised about the location, size and cost of establishing these hubs.</li> <li>• Support for combining services, creating multi-use hubs and grouping hubs to cater for different demographics.</li> </ul>   |

| Category | Feedback summary  |
|----------|---|
| Other    | <ul style="list-style-type: none"> <li>• Questions regarding shared space, types of community facilities and their size, access and location. Information was sought on the intentions for Westgate Park and riverside access, design and ambiance.</li> <li>• Suggestions were made regarding dedicated space for interest groups and human service facilities, and child care services for families.</li> </ul> |

### 3.1.6 PLACE AND IDENTITY

| Category                     | Feedback summary   |
|------------------------------|--|
| Identity and place making    | <ul style="list-style-type: none"> <li>• Comments made about the need for the area to retain a strong identity, including its community values as it grows and changes, with more clarity sought on how this could happen.</li> </ul>  |
| History and living history   | <ul style="list-style-type: none"> <li>• References made to consider and respect the history of Fishermans Bend and integrate the history into the architecture. There were suggestions to create history tours and identify significant historical sites.</li> </ul>  |
| Arts and creative industries | <ul style="list-style-type: none"> <li>• Comments made about ensuring art is integrated in Fishermans Bend, including street art and sculpture, galleries and commissioning arts-based projects to involve old and new communities.</li> <li>• Suggestions made to encourage creative industries that drive cultural and artistic uses, as well as jobs and design hubs..</li> </ul> |
| Diversity                    | <ul style="list-style-type: none"> <li>• Desire for diversity of neighbourhood and ensuring the sustainability of diversity.</li> </ul>  |
| Streetscape                  | <ul style="list-style-type: none"> <li>• Desire for design innovation and variety, ensuring streetscapes are interesting and create a sense of identity.</li> </ul>  |
| Planning                     | <ul style="list-style-type: none"> <li>• Feedback on planning varied from comments regarding heritage controls, connection to surrounding communities, clear identities and district characters for each precinct.</li> <li>• Comments made on a desire to see central hubs, creation of a town centre, and the liveability of buildings including dwelling size.</li> </ul>         |



### 3.1.7 OTHER COMMENTS

| Category               | Feedback summary  |
|------------------------|---|
| Affordable housing     | <ul style="list-style-type: none"> <li>• Comments made about affordability, percentage of affordable housing available and delivery.</li> <li>• Interest and support for a target of social and affordable housing.</li> <li>• Questions raised on how affordable housing would work and whether it would draw young people to the area.</li> </ul> |
| Governance and funding | <ul style="list-style-type: none"> <li>• Comments made regarding an early decision on governance, timing, funding and government commitment.</li> <li>• Desire for certainty around infrastructure timing.</li> </ul>   |

### 3.2 DEVELOPMENT INDUSTRY FEEDBACK

| Category   | Feedback summary   |
|--|--|
| Floor Area Ratios (FARs) and Floor Area Uplift (FAU) | <ul style="list-style-type: none"> <li>• Feedback received seeking to understand the rationale underpinning the FARs and implementation with comments made on the FAU bonus for affordable housing.</li> </ul>   |
| Planning controls and process                        | <ul style="list-style-type: none"> <li>• Concerns raised that planning controls should not be more onerous than elsewhere in the Capital City Zone in Melbourne CBD.</li> <li>• Questions raised about the impact on land value and transitional arrangements.</li> <li>• Clarity sought on the planning process.</li> </ul> |
| Design   | <ul style="list-style-type: none"> <li>• Comments made about car parking ratios and the need to prioritise early public transport delivery.</li> </ul>   |
| Population   | <ul style="list-style-type: none"> <li>• Feedback received about the proposed number of residents.</li> <li>• Comments made about the opportunity to accommodate a higher population.</li> </ul>   |
| Other  | <ul style="list-style-type: none"> <li>• Other feedback included the effects on the local housing market, the mix of residential developments to cater for different demographics, plot areas, precinct planning, consideration of existing industry and the port, flooding and geotechnical conditions.</li> </ul>          |

### 3.3 BUSINESS SECTOR FEEDBACK

| Category | Feedback summary  |
|----------|---|
| Jobs     | <ul style="list-style-type: none"> <li>• Feedback and interest in local job opportunities the employment precinct would offer.</li> </ul> |

| Category         | Feedback summary   |
|------------------|--|
| Current business | <ul style="list-style-type: none"> <li>• Questions raised about existing businesses, with local businesses asking about transport, open space, acquisition and planning process.</li> </ul>  |
| Industry         | <ul style="list-style-type: none"> <li>• Feedback on innovation, the importance of balancing the needs of future businesses with current industry and transforming the precinct from a traditional industrial estate to a diverse and vibrant employment precinct.</li> </ul>                  |
| Diversity        | <ul style="list-style-type: none"> <li>• Suggestions made on dispersing retail throughout the area and not limiting it to shopping centres.</li> </ul>   |
| Other            | <ul style="list-style-type: none"> <li>• Feedback received that infrastructure must be built early.</li> <li>• Questions raised about flooding.</li> <li>• Suggestion made to provide incentives for businesses to be established early to make it a more attractive place to work.</li> </ul> |

## 4. EVALUATION

The engagement activities were designed to provide information and clearly explain the draft Framework, planning controls and background reports with many opportunities for participants to ask questions, share their ideas and feedback.

This ambition was achieved with over 1200 people spoken to in person and over 550,000 people reached online.

Building community understanding about the key elements of the Framework was achieved through discussions, communication materials and presentations.

The submission process was explained at each session and event, and resulted in 251 submissions to the Planning Review Panel.

Feedback on the engagement process was positive with many post-session surveys indicating participants found the sessions valuable and informative.

## 5. CONCLUSION

The Taskforce will finalise the Fishermans Bend Framework and planning controls following the Fishermans Bend Planning Review Panel submission hearings commencing in March 2018.

The next stage of planning involves the development of Precinct Plans in conjunction with our partners and the community. The Precinct Plans will outline in detail how the objectives and strategies set in the Framework will be applied to each of the unique areas in Fishermans Bend. These plans will also provide information about the implementation of the renewal works, including priority and timing of future facilities and infrastructure.

Contact us:

-  [www.fishermansbend.vic.gov.au](http://www.fishermansbend.vic.gov.au)
-  [fishermansbend@delwp.vic.gov.au](mailto:fishermansbend@delwp.vic.gov.au)
-  [@fishermans\\_bend](https://twitter.com/fishermans_bend)
-  Victorian Government Contact Centre – 1300 366 356
-  Translation Service – 03 9280 0787