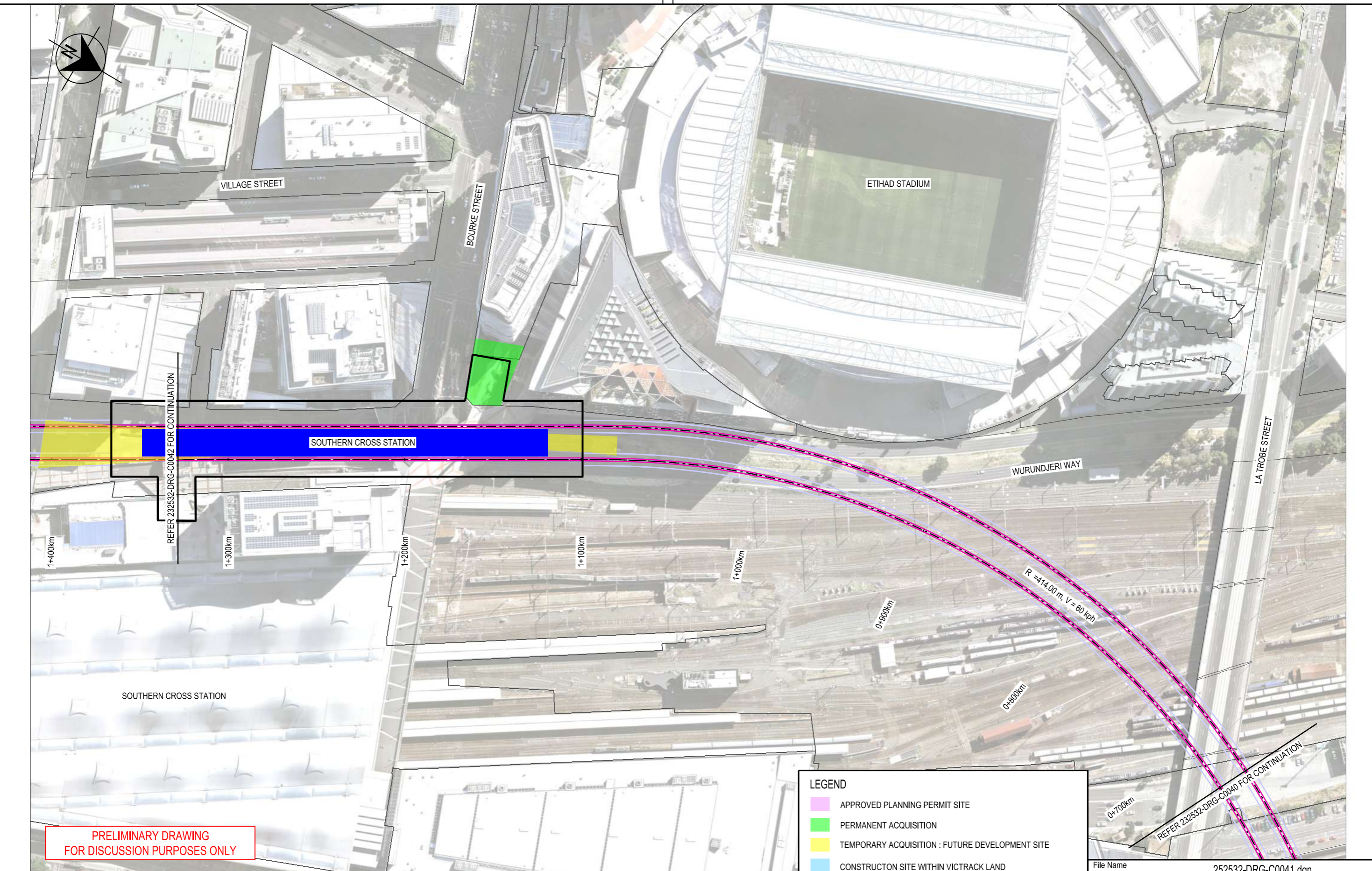


(DATE)
 (SIGNATURE)
 (BLOCK LETTERS)
 Certified By:



PRELIMINARY DRAWING
 FOR DISCUSSION PURPOSES ONLY

LEGEND

- APPROVED PLANNING PERMIT SITE
- PERMANENT ACQUISITION
- TEMPORARY ACQUISITION : FUTURE DEVELOPMENT SITE
- CONSTRUCTION SITE WITHIN VICTRACK LAND

File Name 252532-DRG-C0041.dgn

AURECON	P1	15.11.16	PRELIMINARY ISSUE - POST ALIGNMENT SELECTION WORK SHOP	R.M.H.	J.E.B.	
Revised By	In Serv	Rev.	Date	Description	Designed	Checked/Ind. Rev. Approv.

Consultant

aurecon

www.aurecongroup.com

VICTORIA

State Government

Environment, Land, Water and Planning

This drawing has been prepared by, or compiled from information provided by, persons other than Victrack. To the maximum extent permissible by law, Victrack takes no responsibility for, and makes no representations in relation to, the completeness, accuracy or quality of any information contained in this drawing. Each user of this drawing releases Victrack from all and any loss, damage, cost, expense or liability in relation to the use of, or any reliance on, this drawing or the information contained in it.

All written dimensions take precedence over scaled dimensions.

This drawing is provided only for the information of the person or organisation to whom Victrack provides it. It may not be provided to, or used by, any other person without Victrack's prior written consent.

RAILWAY TRACK AND CIVIL

MELBOURNE

FISHERMANS BEND METRO

FEASIBILITY STUDY

PREFERRED ALIGNMENT OPTION 2

Up Location	Down Location	Datum
East.	East.	MGA Z55
North.	North.	
ID#	ID#	

VicTrack

ACCESS

File Name 252532-DRG-C0041.dgn	Drawn By R.HOWELLS
Sheet No. 01 of 01	Designed By R.HOWELLS
In Serv.	Checked By J.BELCHER
Scale 1:2000	Approved
Sheet Size A3	Approval Date
Drawing Number	Revision P1

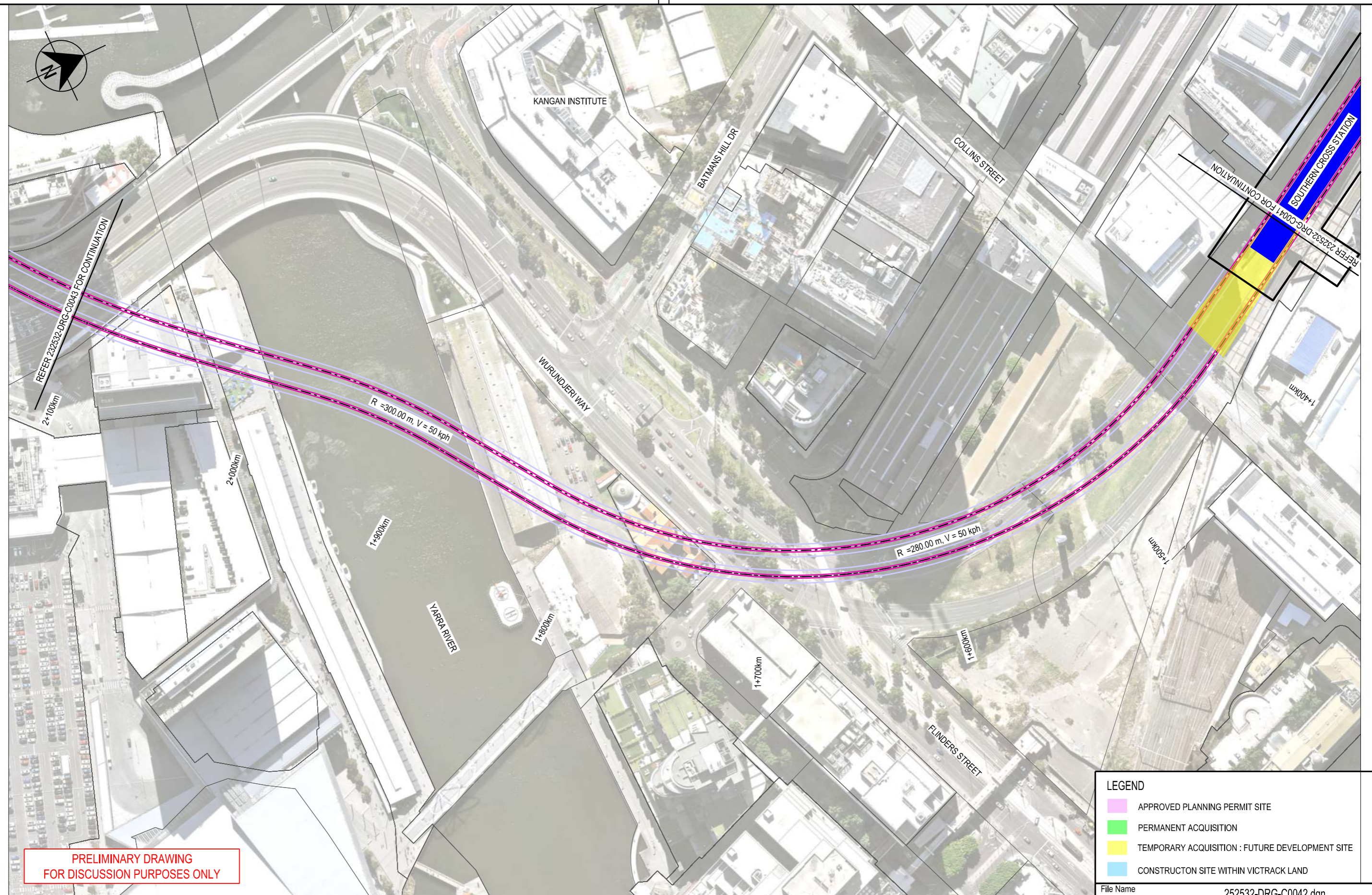
9:50:41 AM
 11/28/2016

Certified By:

(BLOCK LETTERS)

(SIGNATURE)

(DATE)



PRELIMINARY DRAWING
FOR DISCUSSION PURPOSES ONLY

LEGEND	
	APPROVED PLANNING PERMIT SITE
	PERMANENT ACQUISITION
	TEMPORARY ACQUISITION : FUTURE DEVELOPMENT SITE
	CONSTRUCTION SITE WITHIN VICTRACK LAND

File Name 252532-DRG-C0042.dgn

11/28/2016	9:51:06 AM																			
AURECON	P1	15.11.16	PRELIMINARY ISSUE - POST ALIGNMENT SELECTION WORK SHOP	R.M.H.	J.E.B.															
Revised By	In Serv	Rev.	Date	Description	Designed	Checked	Ind. Rev.	Approv.												

Consultant



www.aurecongroup.com



This drawing has been prepared by, or compiled from information provided by, persons other than Victrack. To the maximum extent permissible by law, Victrack takes no responsibility for, and makes no representations in relation to the completeness, accuracy or quality of any information contained in this drawing. Each user of this drawing releases Victrack from all and any loss, damage, cost, expense or liability in relation to the use of, or any reliance on, this drawing or the information contained in it.

All written dimensions take precedence over scaled dimensions.

This drawing is provided only for the information of the person or organisation to whom Victrack provides it. It may not be provided to, or used by, any other person without Victrack's prior written consent.

RAILWAY TRACK AND CIVIL		
MELBOURNE		
FISHERMANS BEND METRO		
FEASIBILITY STUDY		
PREFERRED ALIGNMENT OPTION 2		
Up Location	Down Location	Datum
East.	East.	MGA Z55
North.	North.	
ID#	ID#	

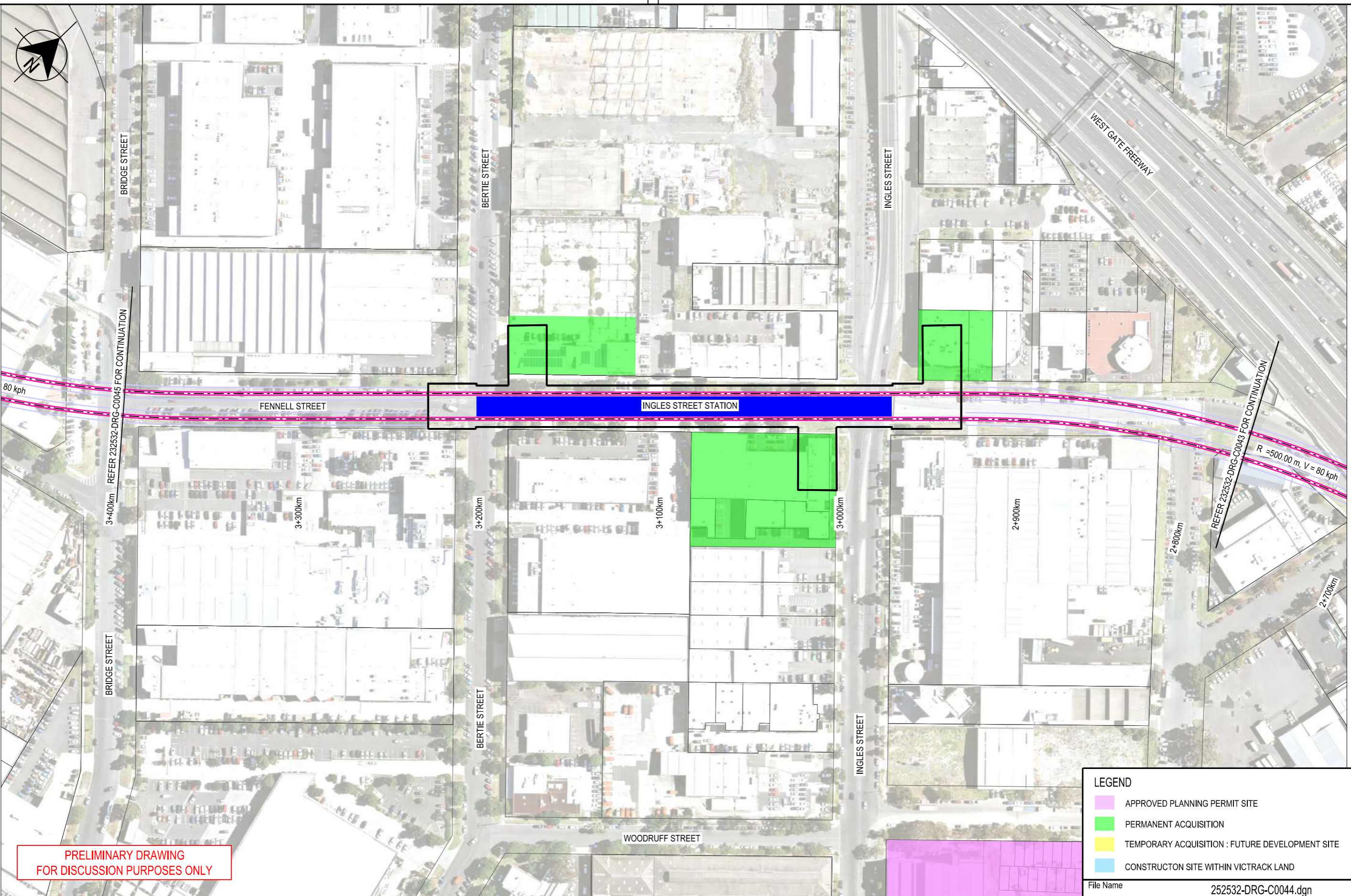
VicTrack <small>ACCESS</small>		Drawn By R.HOWELLS	Designed By R.HOWELLS
File Name 252532-DRG-C0042.dgn	Checked By J.BELCHER	Approved	Approval Date
Sheet No. 01 of 01	Drawing Number	Revision P1	
In Serv.	Scale 1:2000	Sheet Size A3	

Certified By:

(BLOCK LETTERS)

(SIGNATURE)

(DATE)



PRELIMINARY DRAWING FOR DISCUSSION PURPOSES ONLY

LEGEND	
	APPROVED PLANNING PERMIT SITE
	PERMANENT ACQUISITION
	TEMPORARY ACQUISITION : FUTURE DEVELOPMENT SITE
	CONSTRUCTION SITE WITHIN VICTRACK LAND

File Name		252532-DRG-C0044.dgn	
Drawn By	R.HOWELLS	Designed By	R.HOWELLS
Checked By	J.BELCHER	Ind. Review	
Approved		Approval Date	
File Name	252532-DRG-C0044.dgn		
Sheet No.	01 of 01		
In Serv.			
Scale	1:2000	Sheet Size	A3
Drawing Number			Revision
			P1

11/28/2016 9:51:27 AM

Revised By	In Serv	Rev.	Date	Description	Designed	Checked	Ind. Rev.	Approv.
AURECON		P1	15.11.16	PRELIMINARY ISSUE - POST ALIGNMENT SELECTION WORK SHOP	R.M.H.	J.E.B.		

Consultant



www.aurecongroup.com



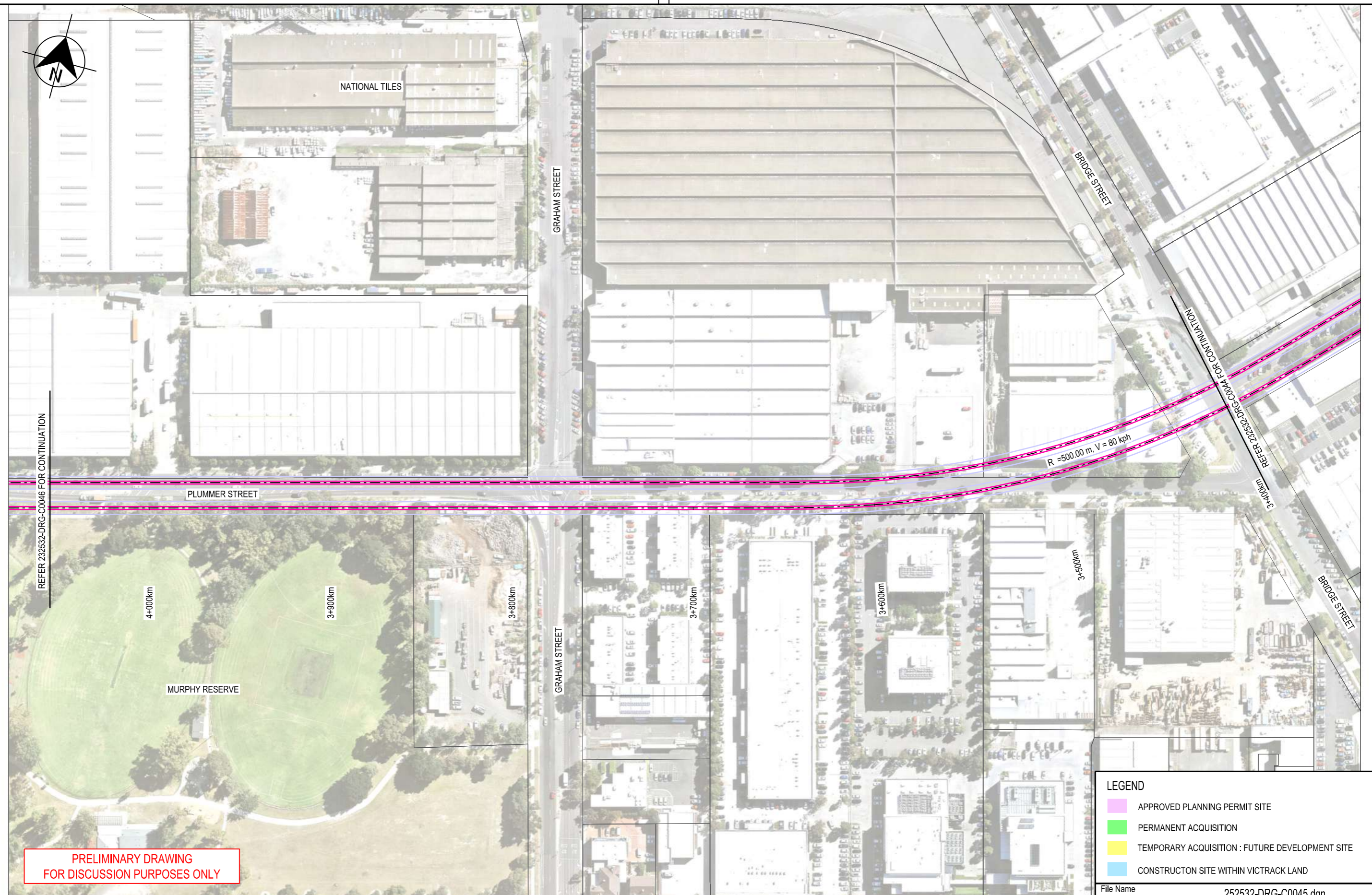
This drawing has been prepared by, or compiled from information provided by, persons other than Victrack. To the maximum extent permissible by law, Victrack takes no responsibility for, and makes no representations in relation to, the completeness, accuracy or quality of any information contained in this drawing. Each user of this drawing releases Victrack from all and any loss, damage, cost, expense or liability in relation to the use of, or any reliance on, this drawing or the information contained in it.

All written dimensions take precedence over scaled dimensions.

This drawing is provided only for the information of the person or organisation to whom Victrack provides it. It may not be provided to, or used by, any other person without Victrack's prior written consent.

RAILWAY TRACK AND CIVIL		
MELBOURNE		
FISHERMANS BEND METRO		
FEASIBILITY STUDY		
PREFERRED ALIGNMENT OPTION 2		
Up Location	Down Location	Datum
East. North. ID#	East. North. ID#	MGA Z55

Certified By: (BLOCK LETTERS)
(SIGNATURE)
(DATE)



PRELIMINARY DRAWING FOR DISCUSSION PURPOSES ONLY

LEGEND

- APPROVED PLANNING PERMIT SITE
- PERMANENT ACQUISITION
- TEMPORARY ACQUISITION : FUTURE DEVELOPMENT SITE
- CONSTRUCTION SITE WITHIN VICTRACK LAND

File Name 252532-DRG-C0045.dgn

11/28/2016 9:51:41 AM

AURECON	P1	15.11.16	PRELIMINARY ISSUE - POST ALIGNMENT SELECTION WORK SHOP	R.M.H.	J.E.B.			
Revised By	In Serv	Rev.	Date	Description	Designed	Checked	Ind. Rev.	Approv.

Consultant

aurecon
www.aurecongroup.com

VICTORIA State Government | Environment, Land, Water and Planning

This drawing has been prepared by, or compiled from information provided by, persons other than Victrack. To the maximum extent permissible by law, Victrack takes no responsibility for, and makes no representations in relation to, the completeness, accuracy or quality of any information contained in this drawing. Each user of this drawing releases Victrack from all and any loss, damage, cost, expense or liability in relation to the use of, or any reliance on, this drawing or the information contained in it.

All written dimensions take precedence over scaled dimensions.

This drawing is provided only for the information of the person or organisation to whom Victrack provides it. It may not be provided to, or used by, any other person without Victrack's prior written consent.

RAILWAY TRACK AND CIVIL

MELBOURNE

FISHERMANS BEND METRO
FEASIBILITY STUDY
PREFERRED ALIGNMENT OPTION 2

Up Location East. North. ID#	Down Location East. North. ID#	Datum MGA Z55
------------------------------	--------------------------------	---------------

VicTrack
ACCESS

File Name 252532-DRG-C0045.dgn

Sheet No. **01 of 01**

In Serv.

Scale 1:2000 Sheet Size A3

Drawn By R.HOWELLS	Designed By R.HOWELLS
Checked By J.BELCHER	Ind. Review
Approved	Approval Date
Drawing Number	Revision P1

(DATE)

(SIGNATURE)

(BLOCK LETTERS)

Certified By:



ROCKLEA DRIVE

PORT MELBOURNE INDUSTRIAL ESTATE

SALMON STREET

PLUMMER STREET

SALMON STREET STATION

PLUMMER STREET

REFER 232532-DRG-C0047 FOR CONTINUATION

REFER 232532-DRG-C0045 FOR CONTINUATION

4+700km

4+600km

4+500km

4+400km

4+300km

4+200km

4+100km

SMITH STREET

SALMON STREET

PORT MELBOURNE SOCCER CLUB

JL MURPHY RESERVE

PRELIMINARY DRAWING FOR DISCUSSION PURPOSES ONLY

LEGEND	
	APPROVED PLANNING PERMIT SITE
	PERMANENT ACQUISITION
	TEMPORARY ACQUISITION : FUTURE DEVELOPMENT SITE
	CONSTRUCTION SITE WITHIN VICTRACK LAND

File Name 252532-DRG-C0046.dgn

11/28/2016 9:51:53 AM

Revised By	In Serv	Rev.	Date	Description	Designed	Checked	Ind. Rev.	Approv.
AURECON		P1	15.11.16	PRELIMINARY ISSUE - POST ALIGNMENT SELECTION WORK SHOP	R.M.H.	J.E.B.		

Consultant

www.aurecongroup.com

Environment, Land, Water and Planning

This drawing has been prepared by, or compiled from information provided by, persons other than Victrack. To the maximum extent permissible by law, Victrack takes no responsibility for, and makes no representations in relation to, the completeness, accuracy or quality of any information contained in this drawing. Each user of this drawing releases Victrack from all and any loss, damage, cost, expense or liability in relation to the use of, or any reliance on, this drawing or the information contained in it.

All written dimensions take precedence over scaled dimensions.

This drawing is provided only for the information of the person or organisation to whom Victrack provides it. It may not be provided to, or used by, any other person without Victrack's prior written consent.

RAILWAY TRACK AND CIVIL

MELBOURNE

FISHERMANS BEND METRO FEASIBILITY STUDY

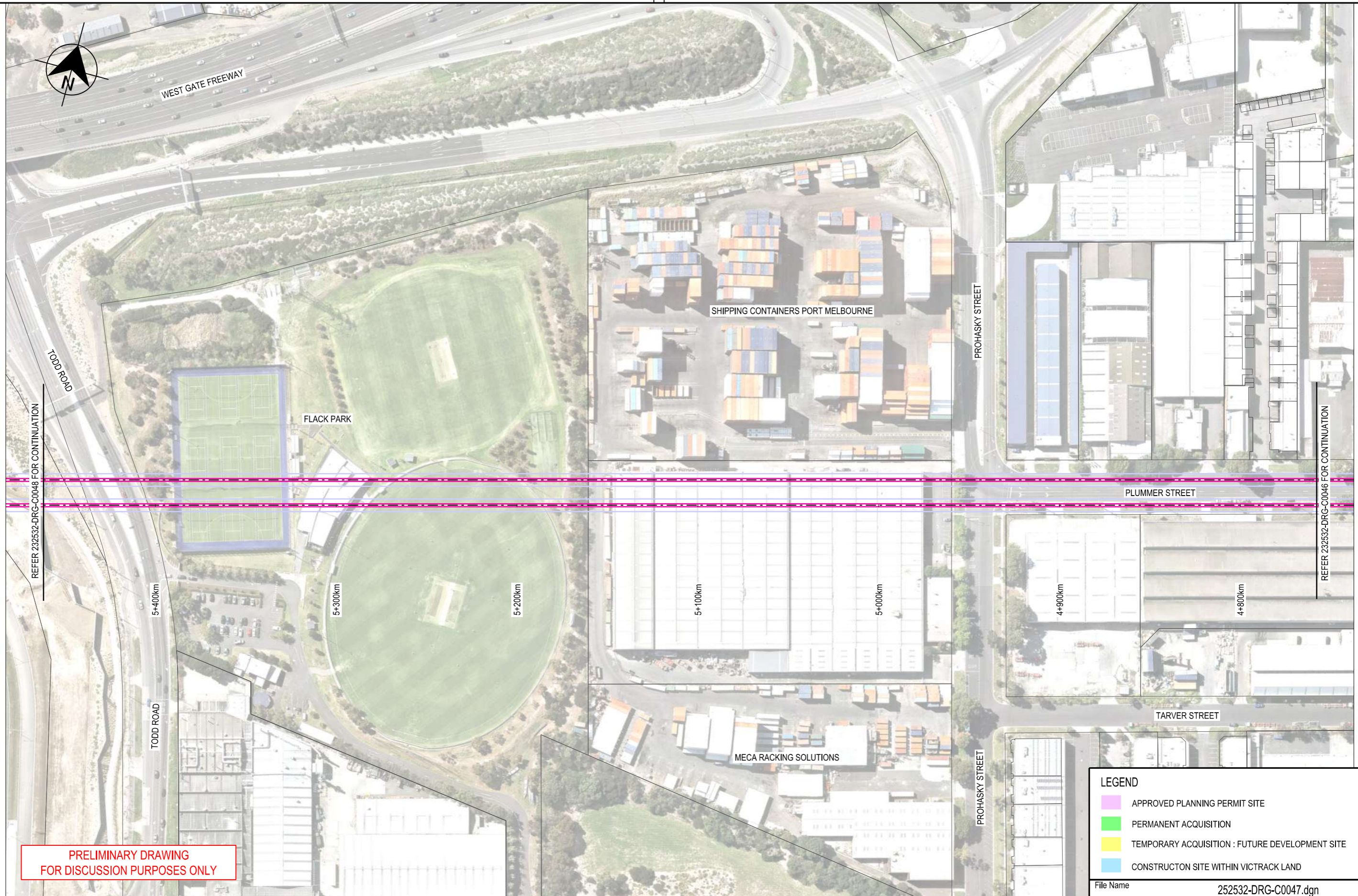
PREFERRED ALIGNMENT OPTION 2

Up Location East. North. ID#	Down Location East. North. ID#	Datum MGA Z55
------------------------------	--------------------------------	---------------

File Name 252532-DRG-C0046.dgn	Drawn By R.HOWELLS	Designed By R.HOWELLS
Sheet No. 01 of 01	Checked By J.BELCHER	Ind. Review
In Serv.	Approved	Approval Date
Scale 1:2000	Sheet Size A3	Drawing Number
		Revision P1

Certified By: (BLOCK LETTERS)

9:52:07 AM
11/28/2016



**PRELIMINARY DRAWING
FOR DISCUSSION PURPOSES ONLY**

LEGEND	
	APPROVED PLANNING PERMIT SITE
	PERMANENT ACQUISITION
	TEMPORARY ACQUISITION : FUTURE DEVELOPMENT SITE
	CONSTRUCTION SITE WITHIN VICTRACK LAND

Revised By	In Serv	Rev.	Date	Description	Designed	Checked	Ind. Rev.	Approv.
AURECON		P1	15.11.16	PRELIMINARY ISSUE - POST ALIGNMENT SELECTION WORK SHOP	R.M.H.	J.E.B.		

Consultant



www.aurecongroup.com



This drawing has been prepared by, or compiled from information provided by, persons other than Victrack. To the maximum extent permissible by law, Victrack takes no responsibility for, and makes no representations in relation to, the completeness, accuracy or quality of any information contained in this drawing. Each user of this drawing releases Victrack from all and any loss, damage, cost, expense or liability in relation to the use of, or any reliance on, this drawing or the information contained in it.

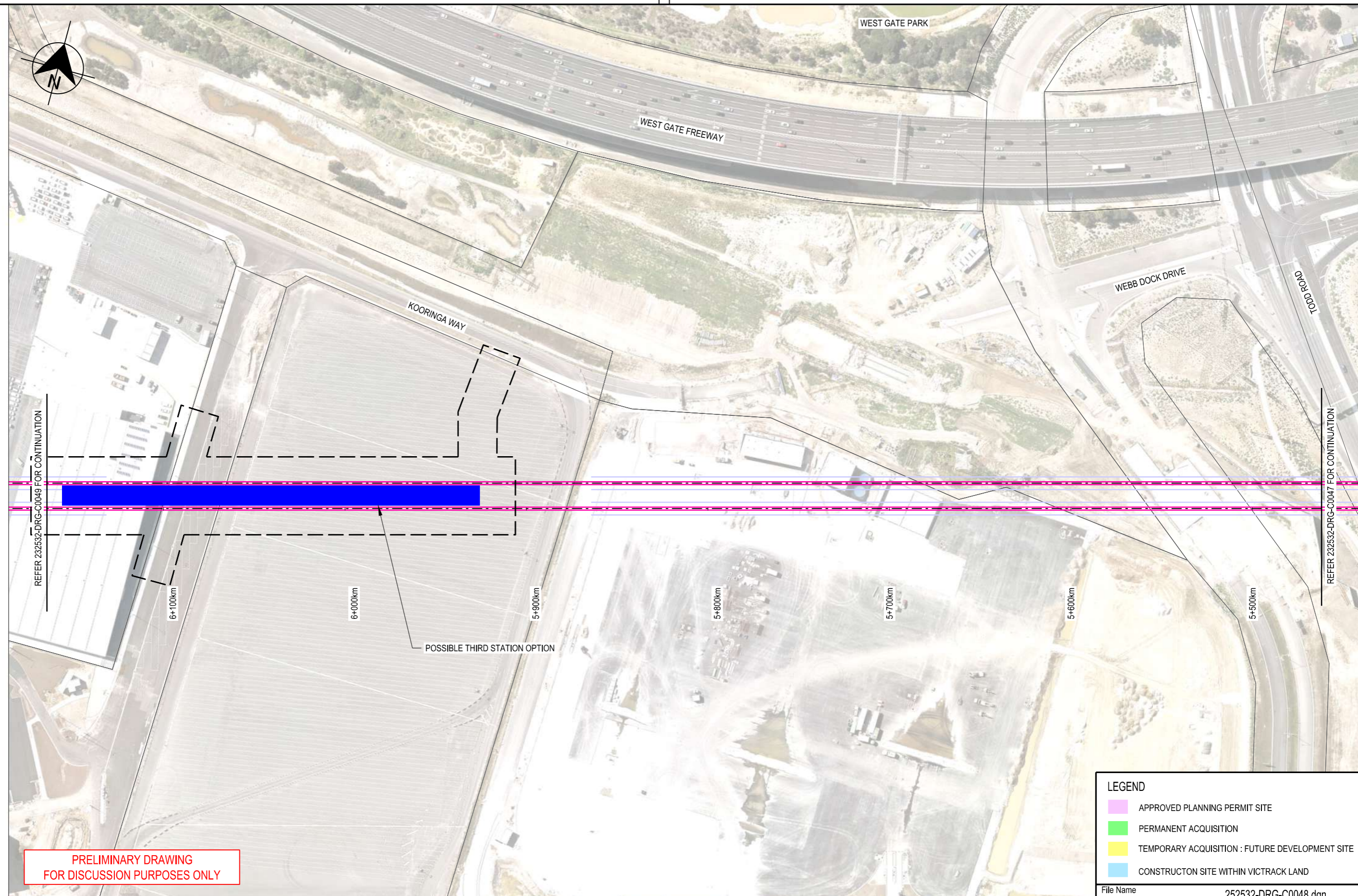
All written dimensions take precedence over scaled dimensions.

This drawing is provided only for the information of the person or organisation to whom Victrack provides it. It may not be provided to, or used by, any other person without Victrack's prior written consent.

RAILWAY TRACK AND CIVIL MELBOURNE FISHERMANS BEND METRO FEASIBILITY STUDY PREFERRED ALIGNMENT OPTION 2		
Up Location East. North. ID#	Down Location East. North. ID#	Datum MGA Z55

File Name 252532-DRG-C0047.dgn		Drawn By R.HOWELLS	Designed By R.HOWELLS
File Name 252532-DRG-C0047.dgn		Checked By J.BELCHER	Ind. Review
Sheet No. 01 of 01		Approved	Approval Date
In Serv.		Drawing Number	
Scale 1:2000	Sheet Size A3	Revision P1	

Certified By: (BLOCK LETTERS)
(SIGNATURE)
(DATE)



LEGEND	
	APPROVED PLANNING PERMIT SITE
	PERMANENT ACQUISITION
	TEMPORARY ACQUISITION : FUTURE DEVELOPMENT SITE
	CONSTRUCTION SITE WITHIN VICTRACK LAND

File Name 252532-DRG-C0048.dgn

Revised By	In Serv	Rev.	Date	Description	Designed	Checked	Ind. Rev.	Approv.
AURECON		P1	15.11.16	PRELIMINARY ISSUE - POST ALIGNMENT SELECTION WORK SHOP	R.M.H.	J.E.B.		

Consultant



www.aurecongroup.com



This drawing has been prepared by, or compiled from information provided by, persons other than Victrack. To the maximum extent permissible by law, Victrack takes no responsibility for, and makes no representations in relation to, the completeness, accuracy or quality of any information contained in this drawing. Each user of this drawing releases Victrack from all and any loss, damage, cost, expense or liability in relation to the use of, or any reliance on, this drawing or the information contained in it.

All written dimensions take precedence over scaled dimensions.


This drawing is provided only for the information of the person or organisation to whom Victrack provides it. It may not be provided to, or used by, any other person without Victrack's prior written consent.

RAILWAY TRACK AND CIVIL

MELBOURNE

FISHERMANS BEND METRO
FEASIBILITY STUDY
PREFERRED ALIGNMENT OPTION 2

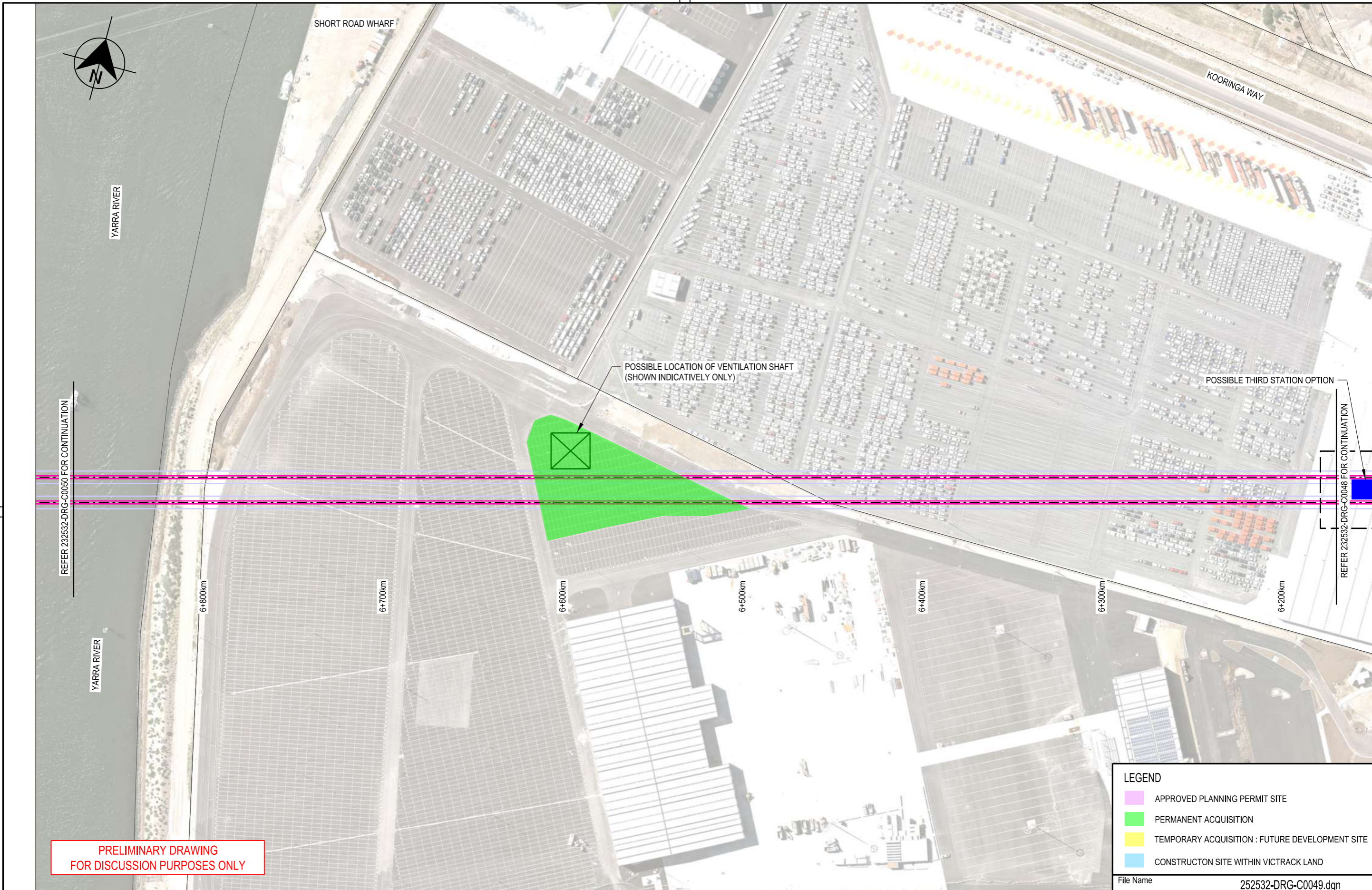
Up Location East. North. ID#	Down Location East. North. ID#	Datum MGA Z55
------------------------------	--------------------------------	---------------



File Name 252532-DRG-C0048.dgn	Drawn By R.HOWELLS	Designed By R.HOWELLS
Sheet No. 01 of 01	Checked By J.BELCHER	Ind. Review
In Serv.	Approved	Approval Date
Scale 1:2000	Sheet Size A3	Drawing Number
		Revision P1

11/28/2016 9:52:17 AM

Certified By: (BLOCK LETTERS) (SIGNATURE) (DATE)



PRELIMINARY DRAWING FOR DISCUSSION PURPOSES ONLY

LEGEND	
	APPROVED PLANNING PERMIT SITE
	PERMANENT ACQUISITION
	TEMPORARY ACQUISITION : FUTURE DEVELOPMENT SITE
	CONSTRUCTION SITE WITHIN VICTRACK LAND

File Name 252532-DRG-C0049.dgn

11/28/2016 9:52:26 AM	AURECON	P1	15.11.16	PRELIMINARY ISSUE - POST ALIGNMENT SELECTION WORK SHOP	R.M.H.	J.E.B.		
	Revised By	In Serv	Rev.	Date	Description	Designed	Checked	Ind. Rev. Approv.

Consultant

aurecon
www.aurecongroup.com

VICTORIA State Government | Environment, Land, Water and Planning

This drawing has been prepared by, or compiled from information provided by, persons other than Victrack. To the maximum extent permissible by law, Victrack takes no responsibility for, and makes no representations in relation to, the completeness, accuracy or quality of any information contained in this drawing. Each user of this drawing releases Victrack from all and any loss, damage, cost, expense or liability in relation to the use of, or any reliance on, this drawing or the information contained in it.

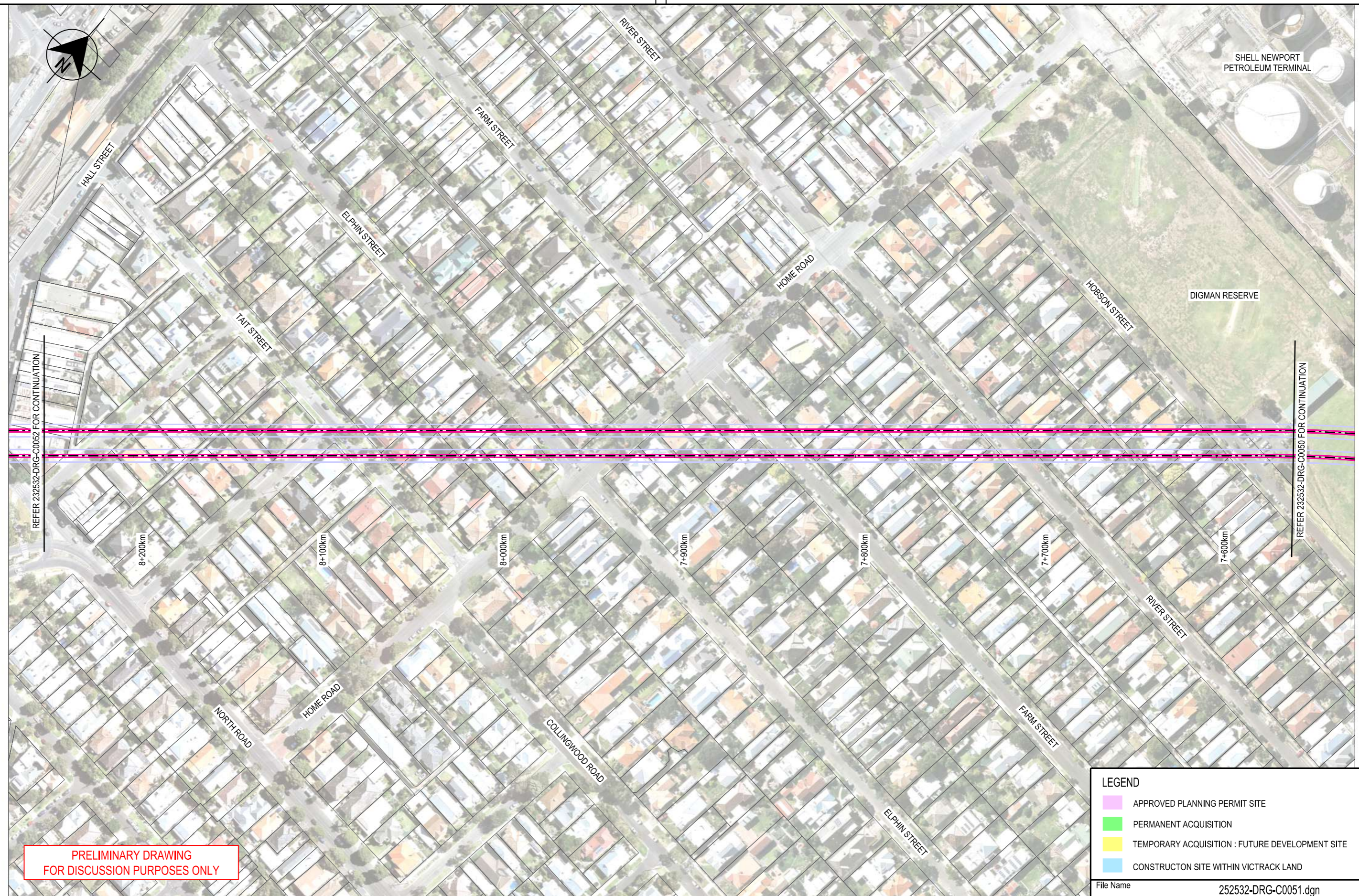
All written dimensions take precedence over scaled dimensions.

This drawing is provided only for the information of the person or organisation to whom Victrack provides it. It may not be provided to, or used by, any other person without Victrack's prior written consent.

RAILWAY TRACK AND CIVIL		
MELBOURNE		
FISHERMANS BEND METRO		
FEASIBILITY STUDY		
PREFERRED ALIGNMENT OPTION 2		
Up Location East North ID#	Down Location East North ID#	Datum MGA Z55

VicTrack ACCESS		Drawn By R.HOWELLS	Designed By R.HOWELLS
File Name 252532-DRG-C0049.dgn	Checked By J.BELCHER	Ind. Review	Approval Date
Sheet No. 01 of 01	Approved	Approval Date	
In Serv.	Drawing Number	Revision P1	
Scale 1:2000	Sheet Size A3		

(DATE)
 (SIGNATURE)
 (BLOCK LETTERS)
 Certified By:



**PRELIMINARY DRAWING
FOR DISCUSSION PURPOSES ONLY**

LEGEND

- APPROVED PLANNING PERMIT SITE
- PERMANENT ACQUISITION
- TEMPORARY ACQUISITION : FUTURE DEVELOPMENT SITE
- CONSTRUCTION SITE WITHIN VICTRACK LAND

File Name 252532-DRG-C0051.dgn

9:52:52 AM
 11/28/2016

AURECON	P1	15.11.16	PRELIMINARY ISSUE - POST ALIGNMENT SELECTION WORK SHOP	R.M.H.	J.E.B.				
Revised By	In Serv	Rev.	Date	Description	Designed	Checked	Ind. Rev.	Approv.	

Consultant

aurecon

www.aurecongroup.com

VICTORIA

State Government | Environment, Land, Water and Planning

This drawing has been prepared by, or compiled from information provided by, persons other than Victrack. To the maximum extent permissible by law, Victrack takes no responsibility for, and makes no representations in relation to, the completeness, accuracy or quality of any information contained in this drawing. Each user of this drawing releases Victrack from all and any loss, damage, cost, expense or liability in relation to the use of, or any reliance on, this drawing or the information contained in it.

All written dimensions take precedence over scaled dimensions.

This drawing is provided only for the information of the person or organisation to whom Victrack provides it. It may not be provided to, or used by, any other person without Victrack's prior written consent.

RAILWAY TRACK AND CIVIL
 MELBOURNE
 FISHERMANS BEND METRO
 FEASIBILITY STUDY
 PREFERRED ALIGNMENT OPTION 2

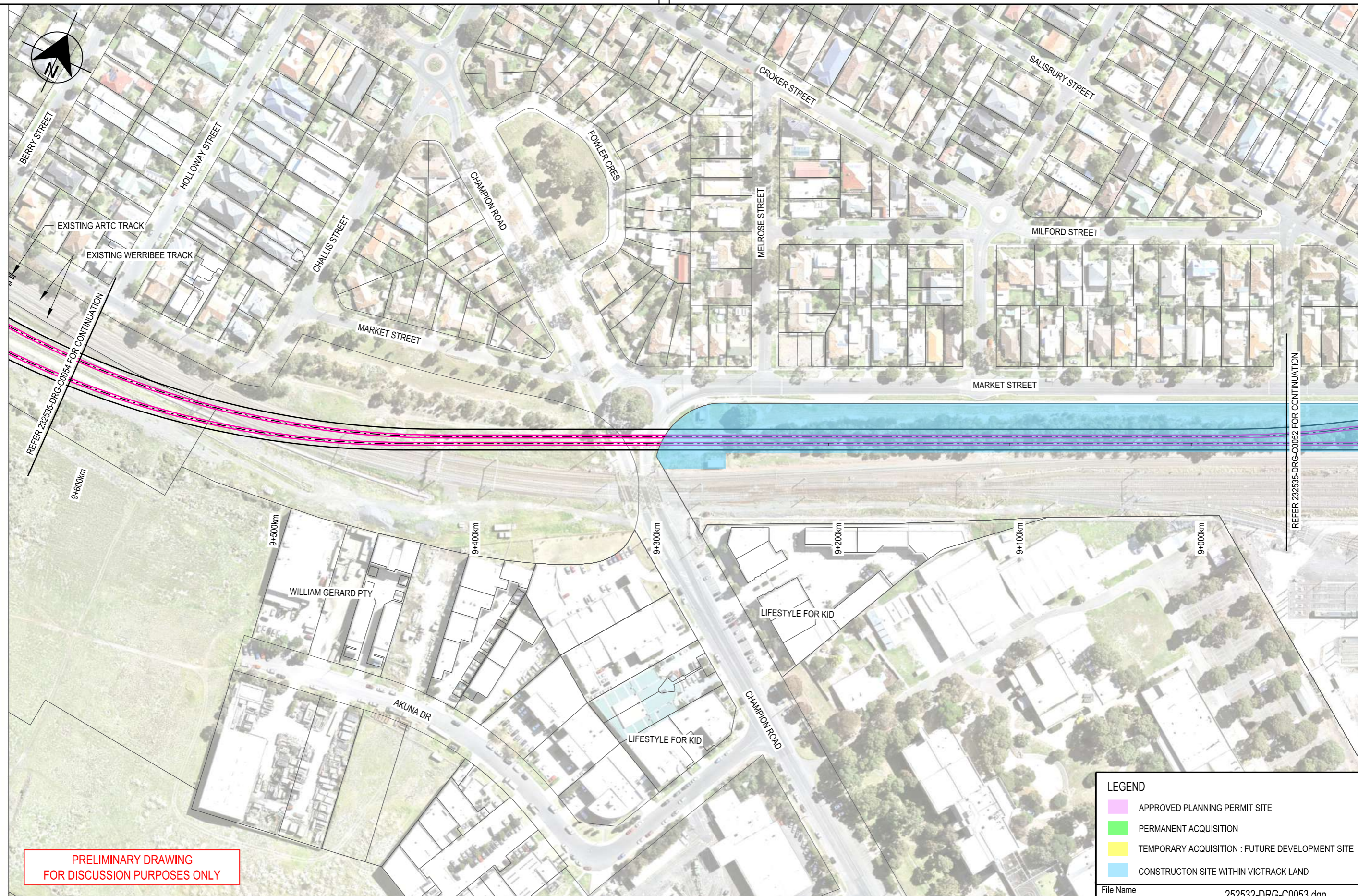
Up Location	Down Location	Datum
East. North. ID#	East. North. ID#	MGA Z55

VicTrack

ACCESS

File Name	252532-DRG-C0051.dgn		
Sheet No.	01 of 01		
In Serv.			
Scale	1:2000	Sheet Size	A3
Drawn By	R.HOWELLS	Designed By	R.HOWELLS
Checked By	J.BELCHER	Ind. Review	
Approved		Approval Date	
Drawing Number		Revision	P1

(DATE)
 (SIGNATURE)
 (BLOCK LETTERS)
 Certified By:



**PRELIMINARY DRAWING
FOR DISCUSSION PURPOSES ONLY**

LEGEND

- APPROVED PLANNING PERMIT SITE
- PERMANENT ACQUISITION
- TEMPORARY ACQUISITION : FUTURE DEVELOPMENT SITE
- CONSTRUCTION SITE WITHIN VICTRACK LAND

File Name 252532-DRG-C0053.dgn

11/28/2016 9:53:22 AM

AURECON	P1	15.11.16	PRELIMINARY ISSUE - POST ALIGNMENT SELECTION WORK SHOP	R.M.H.	J.E.B.	
Revised By	In Serv	Rev.	Date	Description	Designed	Checked/Ind. Rev. Approv.

Consultant

aurecon

www.aurecongroup.com

VICTORIA

State Government | Environment, Land, Water and Planning

This drawing has been prepared by, or compiled from information provided by, persons other than Victrack. To the maximum extent permissible by law, Victrack takes no responsibility for, and makes no representations in relation to, the completeness, accuracy or quality of any information contained in this drawing. Each user of this drawing releases Victrack from all and any loss, damage, cost, expense or liability in relation to the use of, or any reliance on, this drawing or the information contained in it.

All written dimensions take precedence over scaled dimensions.

This drawing is provided only for the information of the person or organisation to whom Victrack provides it. It may not be provided to, or used by, any other person without Victrack's prior written consent.

RAILWAY TRACK AND CIVIL
MELBOURNE
FISHERMANS BEND METRO
FEASIBILITY STUDY
PREFERRED ALIGNMENT OPTION 2

Up Location	Down Location	Datum
East. North. ID#	East. North. ID#	MGA Z55

VicTrack

ACCESS

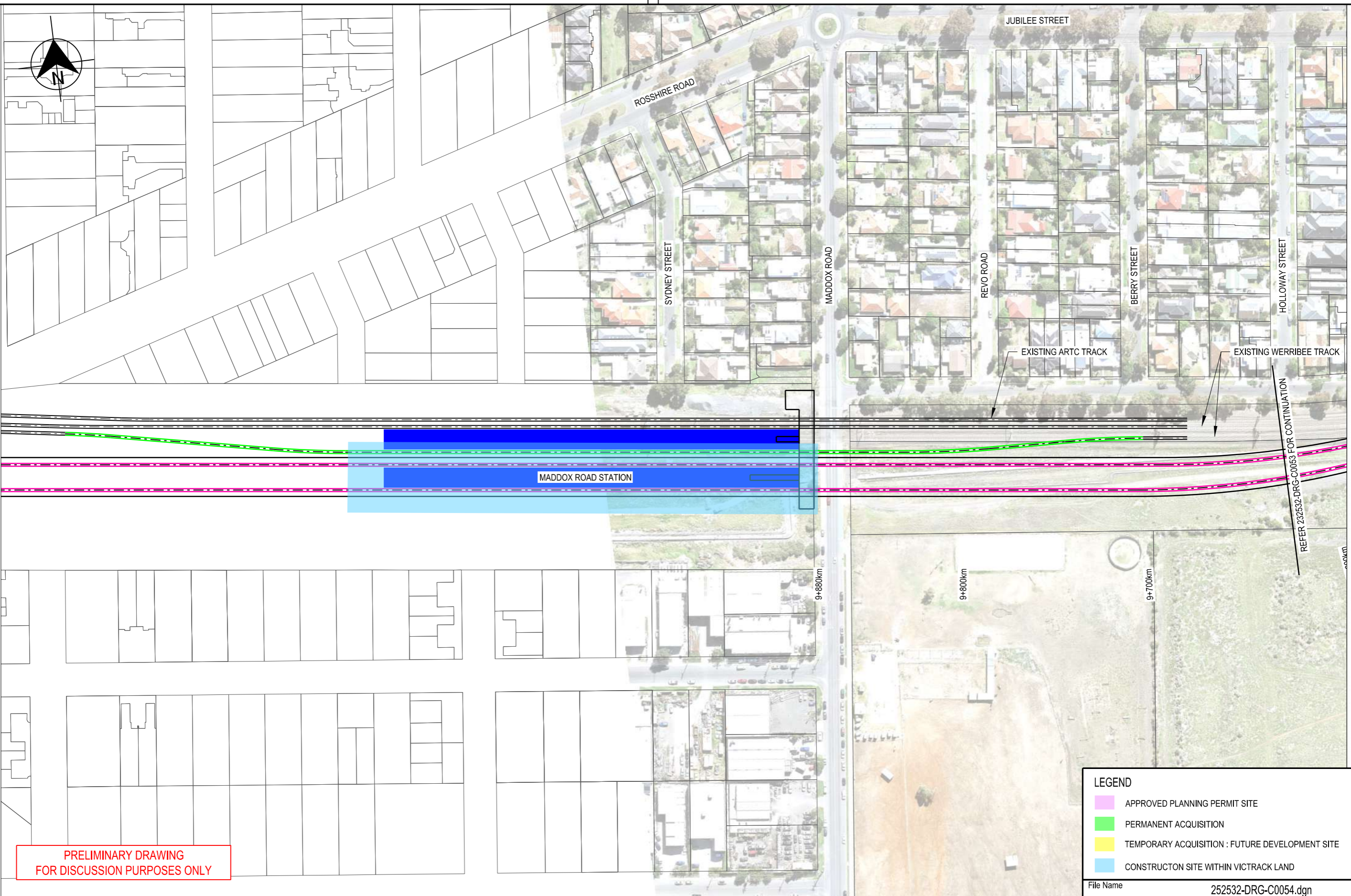
File Name 252532-DRG-C0053.dgn	Drawn By R.HOWELLS
Sheet No. 01 of 01	Designed By R.HOWELLS
In Serv.	Checked By J.BELCHER
Scale 1:2000	Approved
Sheet Size A3	Approval Date
Drawing Number	Revision P1

Certified By:

(BLOCK LETTERS)

(SIGNATURE)

(DATE)



PRELIMINARY DRAWING FOR DISCUSSION PURPOSES ONLY

LEGEND	
	APPROVED PLANNING PERMIT SITE
	PERMANENT ACQUISITION
	TEMPORARY ACQUISITION : FUTURE DEVELOPMENT SITE
	CONSTRUCTION SITE WITHIN VICTRACK LAND

File Name 252532-DRG-C0054.dgn

11/28/2016	9:53:36 AM	AURECON	P1	15.11.16	PRELIMINARY ISSUE - POST ALIGNMENT SELECTION WORK SHOP	R.M.H.	J.E.B.				
Revised By	In Serv	Rev.	Date	Description	Designed	Checked	Ind. Rev.	Approv.			

Consultant

aurecon
www.aurecongroup.com

VICTORIA State Government | Environment, Land, Water and Planning

This drawing has been prepared by, or compiled from information provided by, persons other than Victrack. To the maximum extent permissible by law, Victrack takes no responsibility for, and makes no representations in relation to, the completeness, accuracy or quality of any information contained in this drawing. Each user of this drawing releases Victrack from all and any loss, damage, cost, expense or liability in relation to the use of, or any reliance on, this drawing or the information contained in it.

All written dimensions take precedence over scaled dimensions.

This drawing is provided only for the information of the person or organisation to whom Victrack provides it. It may not be provided to, or used by, any other person without Victrack's prior written consent.

RAILWAY TRACK AND CIVIL

MELBOURNE

FISHERMANS BEND METRO FEASIBILITY STUDY

PREFERRED ALIGNMENT OPTION 2

Up Location East. North. ID#	Down Location East. North. ID#	Datum MGA Z55
------------------------------	--------------------------------	---------------

VicTrack ACCESS

File Name 252532-DRG-C0054.dgn	Sheet No. 01 of 01	In Serv.	Scale 1:2000	Sheet Size A3
Drawn By R.HOWELLS	Checked By J.BELCHER	Approved	Drawing Number	Revision P1
Designed By R.HOWELLS	Ind. Review	Approval Date		