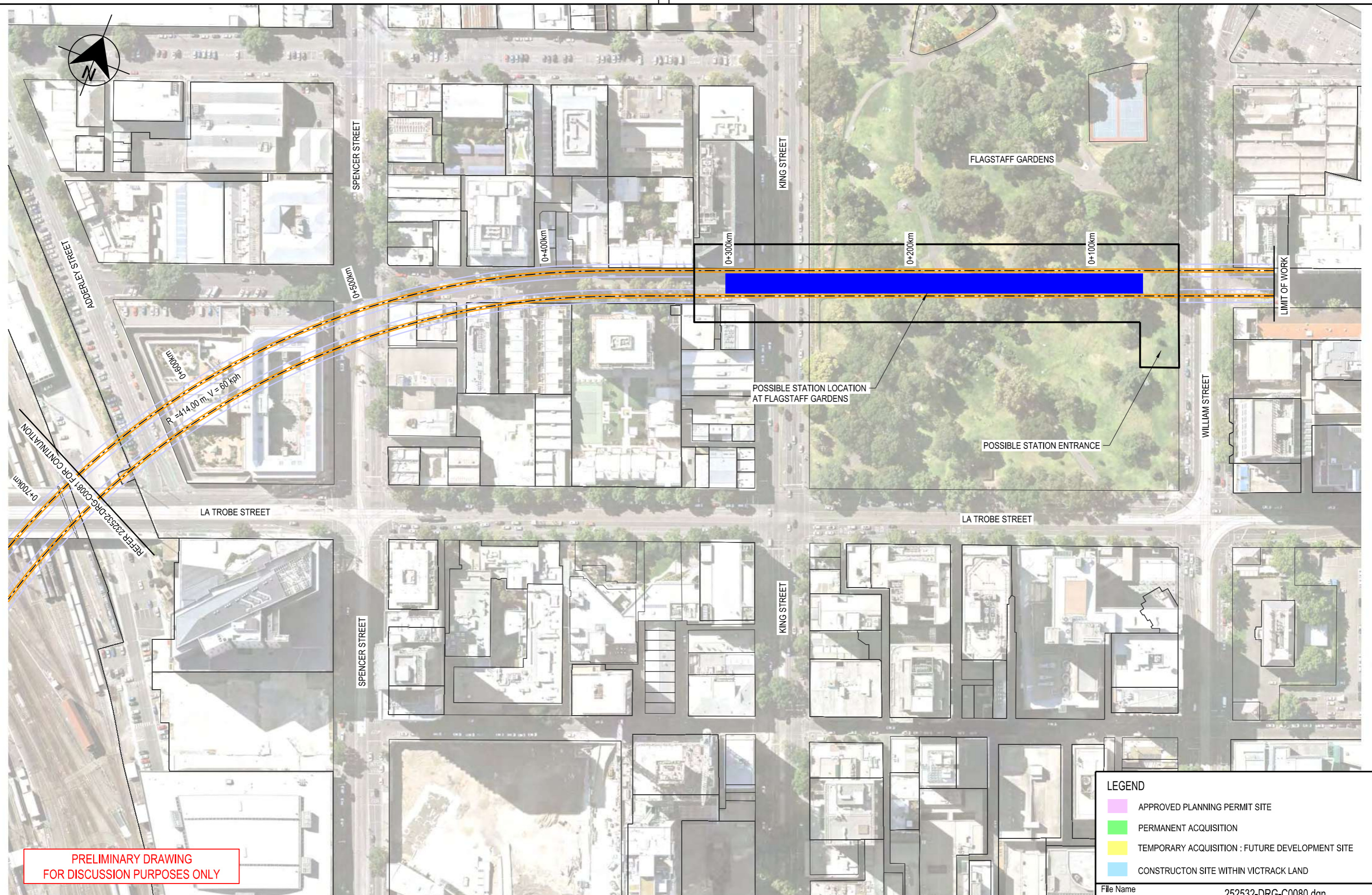


(DATE) _____
 (SIGNATURE) _____
 (BLOCK LETTERS) _____
 Certified By: _____
 2:09:59 PM
 25/11/2016



LEGEND

- APPROVED PLANNING PERMIT SITE
- PERMANENT ACQUISITION
- TEMPORARY ACQUISITION : FUTURE DEVELOPMENT SITE
- CONSTRUCTION SITE WITHIN VICTRACK LAND

File Name 252532-DRG-C0080.dgn

VicTrack
ACCIS

File Name	252532-DRG-C0080.dgn	
Sheet No.	01 of 01	
In Serv.	Drawing Number	
Scale 1:2000	Sheet Size A3	Revision P1

Drawn By	R.HOWELLS	Designed By	R.HOWELLS
Checked By	J.BELCHER	Ind. Review	
Approved		Approval Date	

Revised By	In Serv	Rev.	Date	Description	Designed	Checked	Ind. Rev.	Approv.
AURECON	P1		15.11.16	PRELIMINARY ISSUE - POST ALIGNMENT SELECTION WORK SHOP	R.M.H.	J.E.B.		

Consultant

aurecon
www.aurecongroup.com

VICTORIA
State Government

Environment, Land, Water and Planning

This drawing has been prepared by, or compiled from information provided by, persons other than Victrack. To the maximum extent permissible by law, Victrack takes no responsibility for, and makes no representations in relation to, the completeness, accuracy or quality of any information contained in this drawing. Each user of this drawing releases Victrack from all and any loss, damage, cost, expense or liability in relation to the use of, or any reliance on, this drawing or the information contained in it.

All written dimensions take precedence over scaled dimensions.

This drawing is provided only for the information of the person or organisation to whom Victrack provides it. It may not be provided to, or used by, any other person without Victrack's prior written consent.

RAILWAY TRACK AND CIVIL

MELBOURNE

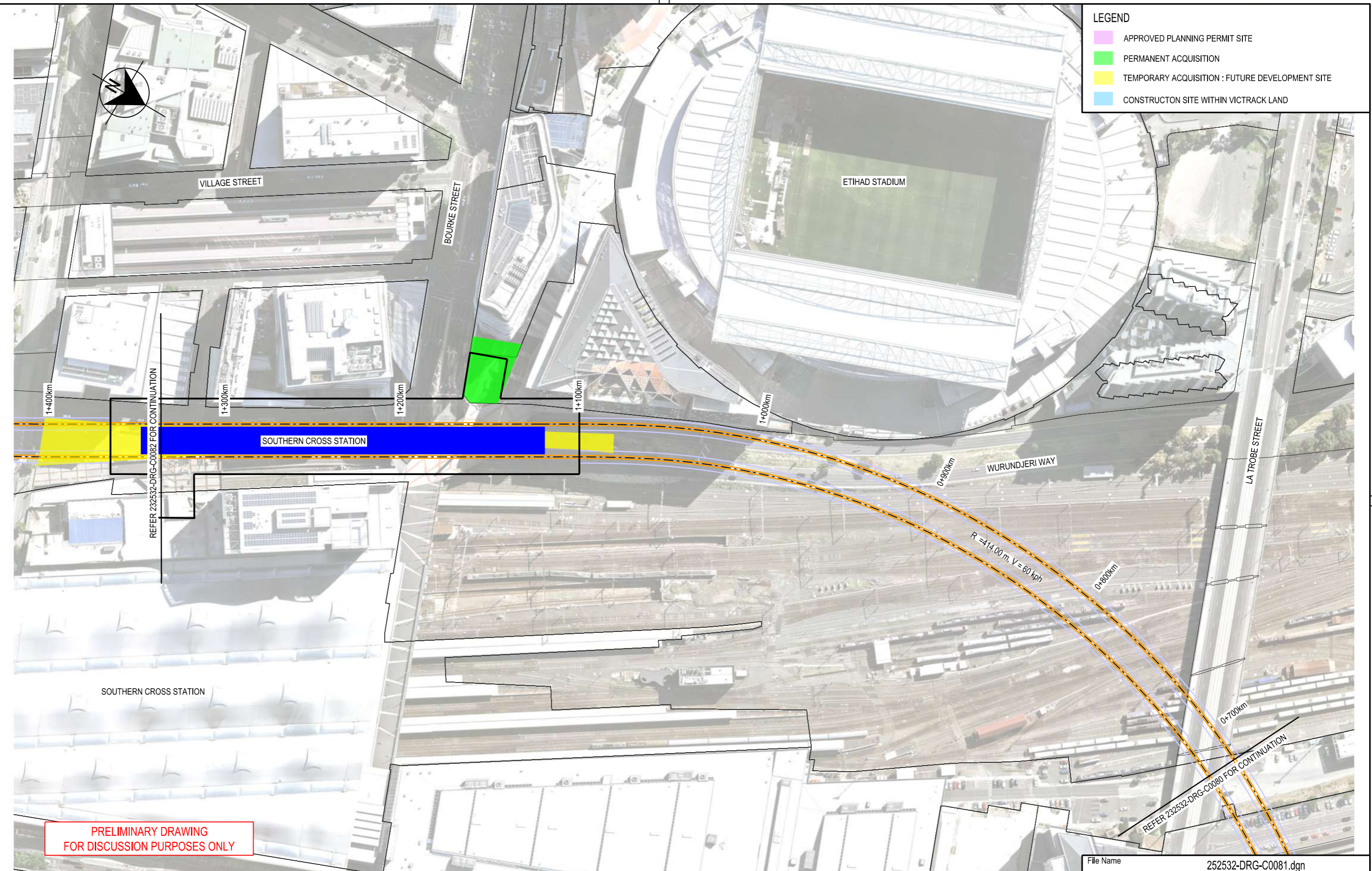
FISHERMANS BEND METRO
FEASIBILITY STUDY
PREFERRED ALIGNMENT OPTION 5

Up Location East. North. ID#	Down Location East. North. ID#	Datum MGA Z55
------------------------------	--------------------------------	---------------

(DATE)
 (SIGNATURE)
 (BLOCK LETTERS)
 Certified By:

LEGEND

- APPROVED PLANNING PERMIT SITE
- PERMANENT ACQUISITION
- TEMPORARY ACQUISITION : FUTURE DEVELOPMENT SITE
- CONSTRUCTION SITE WITHIN VICTRACK LAND



PRELIMINARY DRAWING
 FOR DISCUSSION PURPOSES ONLY

REFER 232532-DRG-C0082 FOR CONTINUATION

REFER 232532-DRG-C0080 FOR CONTINUATION

9:00:47 AM
 1/12/2016

Revised By	In Serv	Rev.	Date	Description	Designed	Checked	Ind. Rev.	Approv.
AURECON		P1	15.11.16	PRELIMINARY ISSUE - POST ALIGNMENT SELECTION WORK SHOP	R.M.H.	J.E.B.		

Consultant

aurecon

www.aurecongroup.com

VICTORIA

State Government

Environment, Land, Water and Planning

This drawing has been prepared by, or compiled from information provided by, persons other than Victrack. To the maximum extent permissible by law, Victrack takes no responsibility for, and makes no representations in relation to, the completeness, accuracy or quality of any information contained in this drawing. Each user of this drawing releases Victrack from all and any loss, damage, cost, expense or liability in relation to the use of, or any reliance on, this drawing or the information contained in it.

All written dimensions take precedence over scaled dimensions.

This drawing is provided only for the information of the person or organisation to whom Victrack provides it. It may not be provided to, or used by, any other person without Victrack's prior written consent.

RAILWAY TRACK AND CIVIL
 MELBOURNE
 FISHERMANS BEND METRO
 FEASIBILITY STUDY
 PREFERRED ALIGNMENT OPTION 5

Up Location East. North. ID#	Down Location East. North. ID#	Datum MGA Z55
------------------------------	--------------------------------	---------------

File Name 252532-DRG-C0081.dgn

VicTrack

ACC-SS

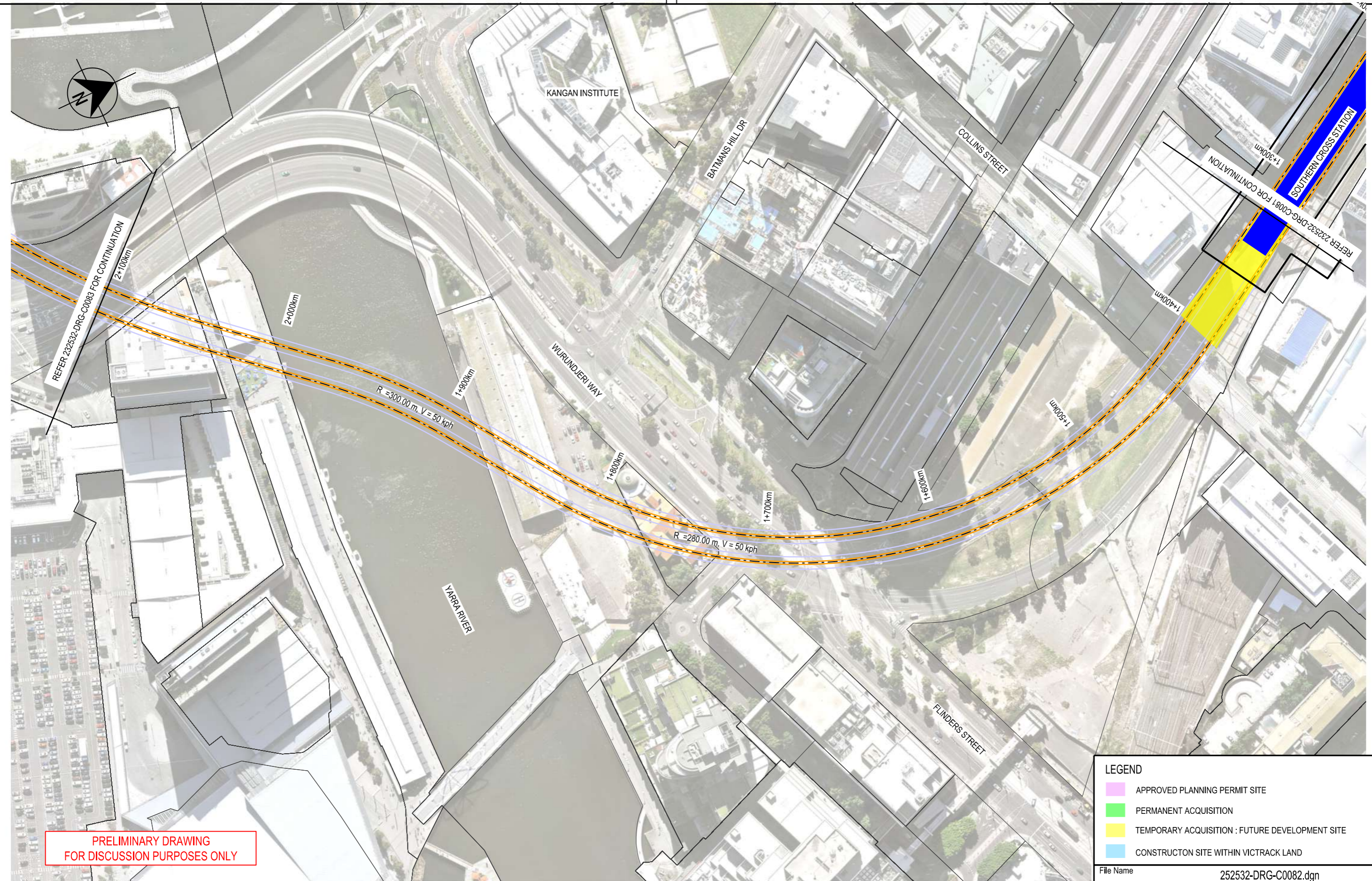
File Name 252532-DRG-C0081.dgn	Drawn By R.HOWELLS	Designed By R.HOWELLS
Sheet No. 01 of 01	Checked By J.BELCHER	Ind. Review
In Serv.	Approved	Approval Date
Scale 1:2000	Sheet Size A3	Drawing Number
		Revision P1

(DATE)

(SIGNATURE)

(BLOCK LETTERS)

Certified By:



PRELIMINARY DRAWING
FOR DISCUSSION PURPOSES ONLY

LEGEND	
	APPROVED PLANNING PERMIT SITE
	PERMANENT ACQUISITION
	TEMPORARY ACQUISITION : FUTURE DEVELOPMENT SITE
	CONSTRUCTION SITE WITHIN VICTRACK LAND

File Name 252532-DRG-C0082.dgn

8:57:41 AM
1/12/2016

Revised By	In Serv	Rev.	Date	Description	Designed	Checked	Ind. Rev.	Approv.
AURECON	P1	15.11.16	PRELIMINARY ISSUE - POST ALIGNMENT SELECTION WORK SHOP	R.M.H.	J.E.B.			

Consultant



www.aurecongroup.com



Environment, Land, Water and Planning

This drawing has been prepared by, or compiled from information provided by, persons other than Victrack. To the maximum extent permissible by law, Victrack takes no responsibility for, and makes no representations in relation to, the completeness, accuracy or quality of any information contained in this drawing. Each user of this drawing releases Victrack from all and any loss, damage, cost, expense or liability in relation to the use of, or any reliance on, this drawing or the information contained in it.

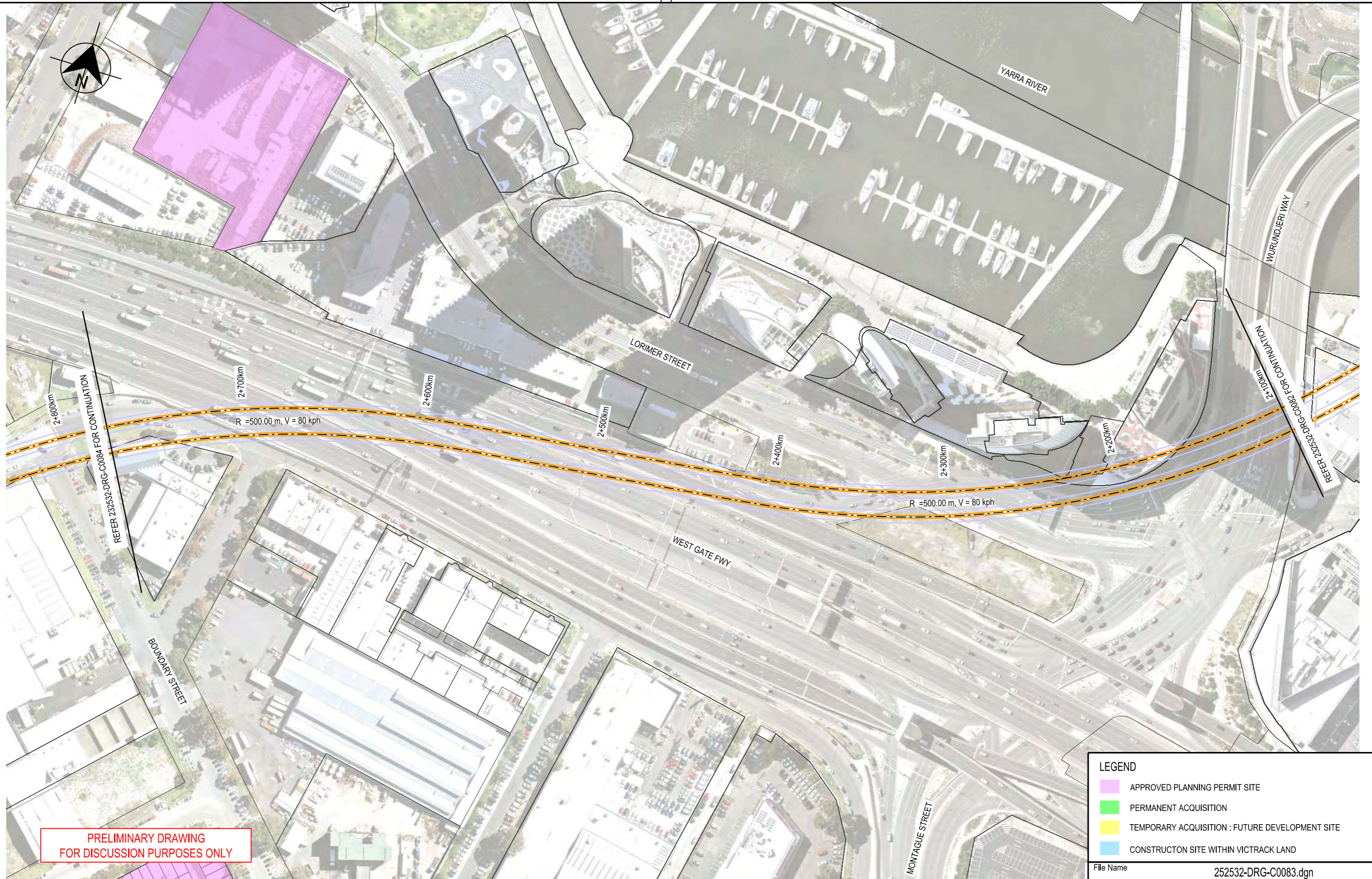
All written dimensions take precedence over scaled dimensions.

This drawing is provided only for the information of the person or organisation to whom Victrack provides it. It may not be provided to, or used by, any other person without Victrack's prior written consent.

RAILWAY TRACK AND CIVIL		
MELBOURNE		
FISHERMANS BEND METRO		
FEASIBILITY STUDY		
PREFERRED ALIGNMENT OPTION 5		
Up Location East. North. ID#	Down Location East. North. ID#	Datum MGA Z55

VicTrack <small>ACCESS</small>		Drawn By R.HOWELLS	Designed By R.HOWELLS
File Name 252532-DRG-C0082.dgn		Checked By J.BELCHER	Ind. Review
Sheet No. 01 of 01		Approved	Approval Date
In Serv.		Drawing Number	
Scale 1:2000	Sheet Size A3	Revision P1	

Certified By: (BLOCK LETTERS) (SIGNATURE) (DATE)



**PRELIMINARY DRAWING
FOR DISCUSSION PURPOSES ONLY**

LEGEND	
	APPROVED PLANNING PERMIT SITE
	PERMANENT ACQUISITION
	TEMPORARY ACQUISITION : FUTURE DEVELOPMENT SITE
	CONSTRUCTION SITE WITHIN VICTRACK LAND

File Name 252532-DRG-C0083.dgn

Revised By	In Serv	Rev.	Date	Description	Designed	Checked	Ind. Rev.	Approv.
AURECON		P1	15.11.16	PRELIMINARY ISSUE - POST ALIGNMENT SELECTION WORK SHOP	R.M.H.	J.E.B.		

Consultant



www.aurecongroup.com



Environment, Land, Water and Planning

This drawing has been prepared by, or compiled from information provided by, persons other than Victrack. To the maximum extent permissible by law, Victrack takes no responsibility for, and makes no representations in relation to, the completeness, accuracy or quality of any information contained in this drawing. Each user of this drawing releases Victrack from all and any loss, damage, cost, expense or liability in relation to the use of, or any reliance on, this drawing or the information contained in it.

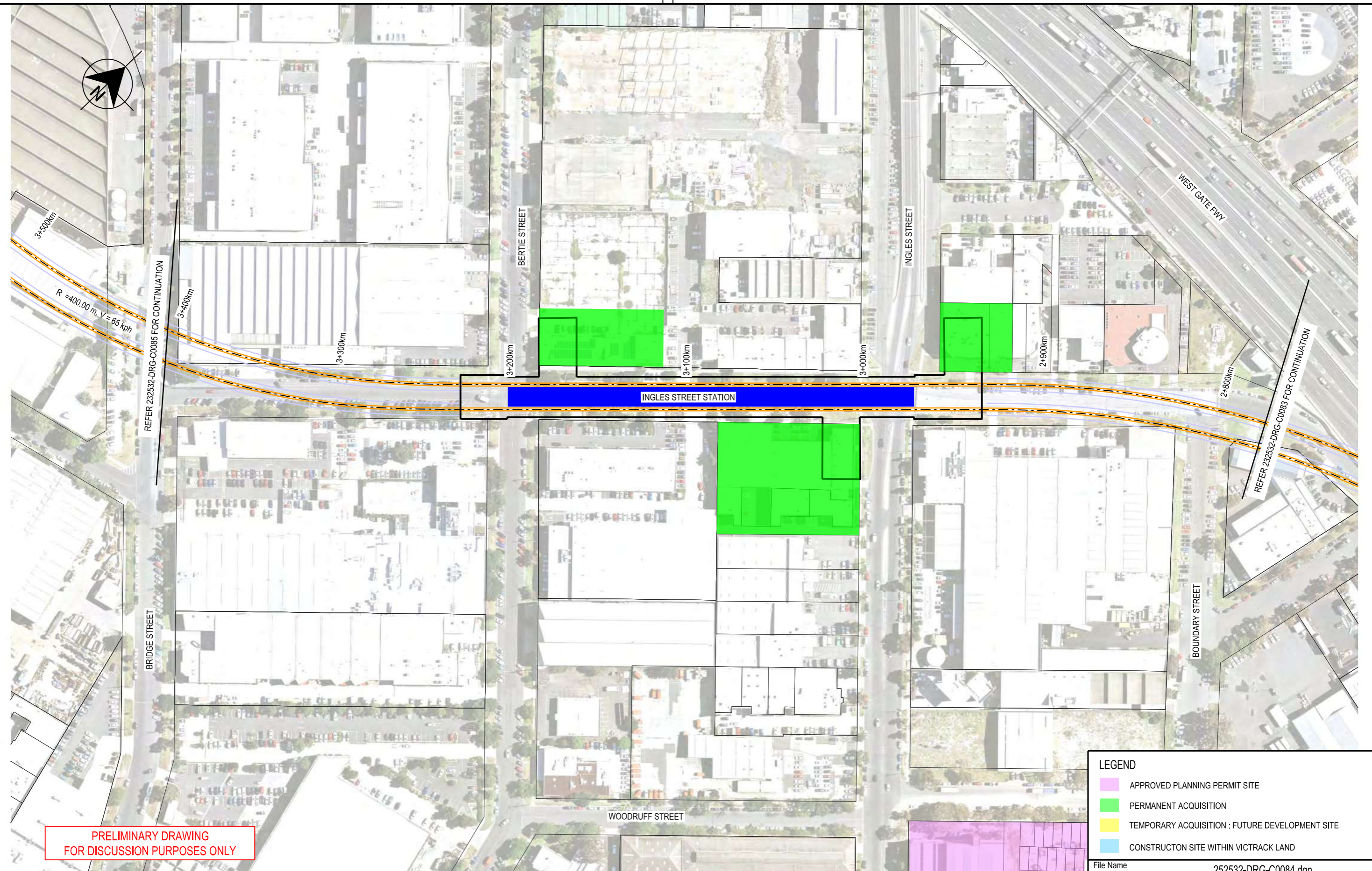
All written dimensions take precedence over scaled dimensions.

This drawing is provided only for the information of the person or organisation to whom Victrack provides it. It may not be provided to, or used by, any other person without Victrack's prior written consent.

RAILWAY TRACK AND CIVIL		
MELBOURNE		
FISHERMANS BEND METRO		
FEASIBILITY STUDY		
PREFERRED ALIGNMENT OPTION 5		
Up Location East. North. ID#	Down Location East. North. ID#	Datum MGA Z55

VicTrack		Drawn By	Designed By
ACCIS		R.HOWELLS	R.HOWELLS
File Name	252532-DRG-C0083.dgn	Checked By	Ind. Review
Sheet No.	01 of 01	Approved	Approval Date
In Serv.		Drawing Number	Revision
Scale 1:2000	Sheet Size A3		P1

Certified By: (BLOCK LETTERS) (SIGNATURE) (DATE)
 25/11/2016 1:20:27 PM



PRELIMINARY DRAWING
 FOR DISCUSSION PURPOSES ONLY

LEGEND	
	APPROVED PLANNING PERMIT SITE
	PERMANENT ACQUISITION
	TEMPORARY ACQUISITION : FUTURE DEVELOPMENT SITE
	CONSTRUCTION SITE WITHIN VICTRACK LAND

File Name		252532-DRG-C0084.dgn	
VicTrack <small>ACCIS</small>		Drawn By	Designed By
File Name		R.HOWELLS	R.HOWELLS
Sheet No.		Checked By	Ind. Review
01 of 01		J.BELCHER	
In Serv.		Approved	Approval Date
Scale 1:2000		Drawing Number	
Sheet Size A3		Revision	
		P1	

Revised By	In Serv	Rev.	Date	Description	Designed	Checked	Ind. Rev.	Approv.
AURECON	P1	15.11.16	PRELIMINARY ISSUE - POST ALIGNMENT SELECTION WORK SHOP	R.M.H.	J.E.B.			

Consultant



www.aurecongroup.com



Environment, Land, Water and Planning

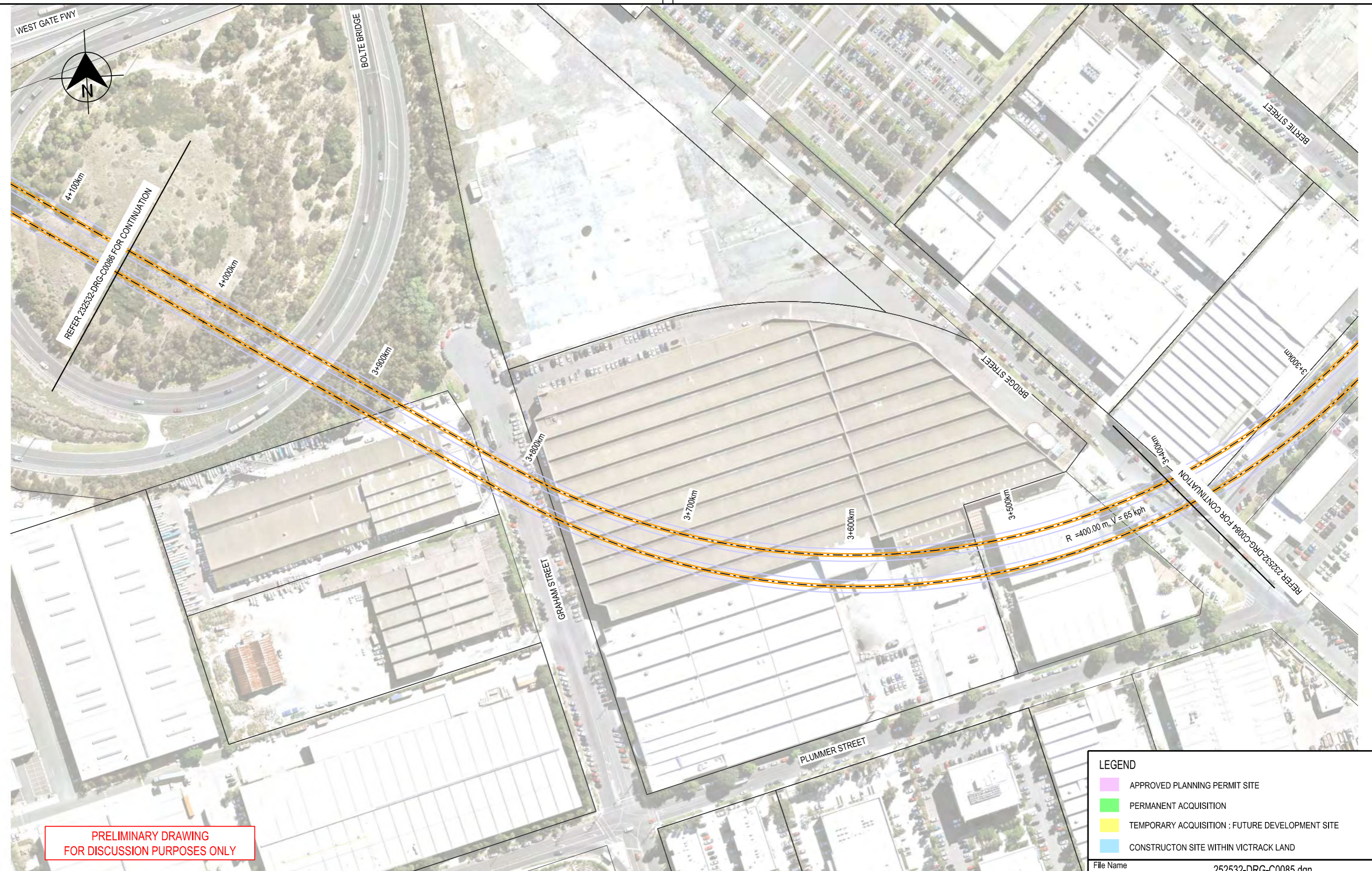
This drawing has been prepared by, or compiled from information provided by, persons other than Victrack. To the maximum extent permissible by law, Victrack takes no responsibility for, and makes no representations in relation to, the completeness, accuracy or quality of any information contained in this drawing. Each user of this drawing releases Victrack from all and any loss, damage, cost, expense or liability in relation to the use of, or any reliance on, this drawing or the information contained in it.

All written dimensions take precedence over scaled dimensions.

This drawing is provided only for the information of the person or organisation to whom Victrack provides it. It may not be provided to, or used by, any other person without Victrack's prior written consent.

RAILWAY TRACK AND CIVIL		
MELBOURNE		
FISHERMANS BEND METRO		
FEASIBILITY STUDY		
PREFERRED ALIGNMENT OPTION 5		
Up Location East. North. ID#	Down Location East. North. ID#	Datum MGA Z55

(DATE)
 (SIGNATURE)
 (BLOCK LETTERS)
 Certified By:



LEGEND	
	APPROVED PLANNING PERMIT SITE
	PERMANENT ACQUISITION
	TEMPORARY ACQUISITION : FUTURE DEVELOPMENT SITE
	CONSTRUCTION SITE WITHIN VICTRACK LAND

File Name		252532-DRG-C0085.dgn	
VicTrack <small>ACCIS</small>		Drawn By	Designed By
File Name		R.HOWELLS	R.HOWELLS
Sheet No.		Checked By	Ind. Review
01 of 01		J.BELCHER	
In Serv.		Approved	Approval Date
Scale 1:2000		Drawing Number	
Sheet Size A3		Revision	
		P1	

Revised By	In Serv	Rev.	Date	Description	Designed	Checked	Ind. Rev.	Approv.
AURECON	P1		15.11.16	PRELIMINARY ISSUE - POST ALIGNMENT SELECTION WORK SHOP	R.M.H.	J.E.B.		

Consultant



www.aurecongroup.com



Environment, Land, Water and Planning

This drawing has been prepared by, or compiled from information provided by, persons other than Victrack. To the maximum extent permissible by law, Victrack takes no responsibility for, and makes no representations in relation to, the completeness, accuracy or quality of any information contained in this drawing. Each user of this drawing releases Victrack from all and any loss, damage, cost, expense or liability in relation to the use of, or any reliance on, this drawing or the information contained in it.

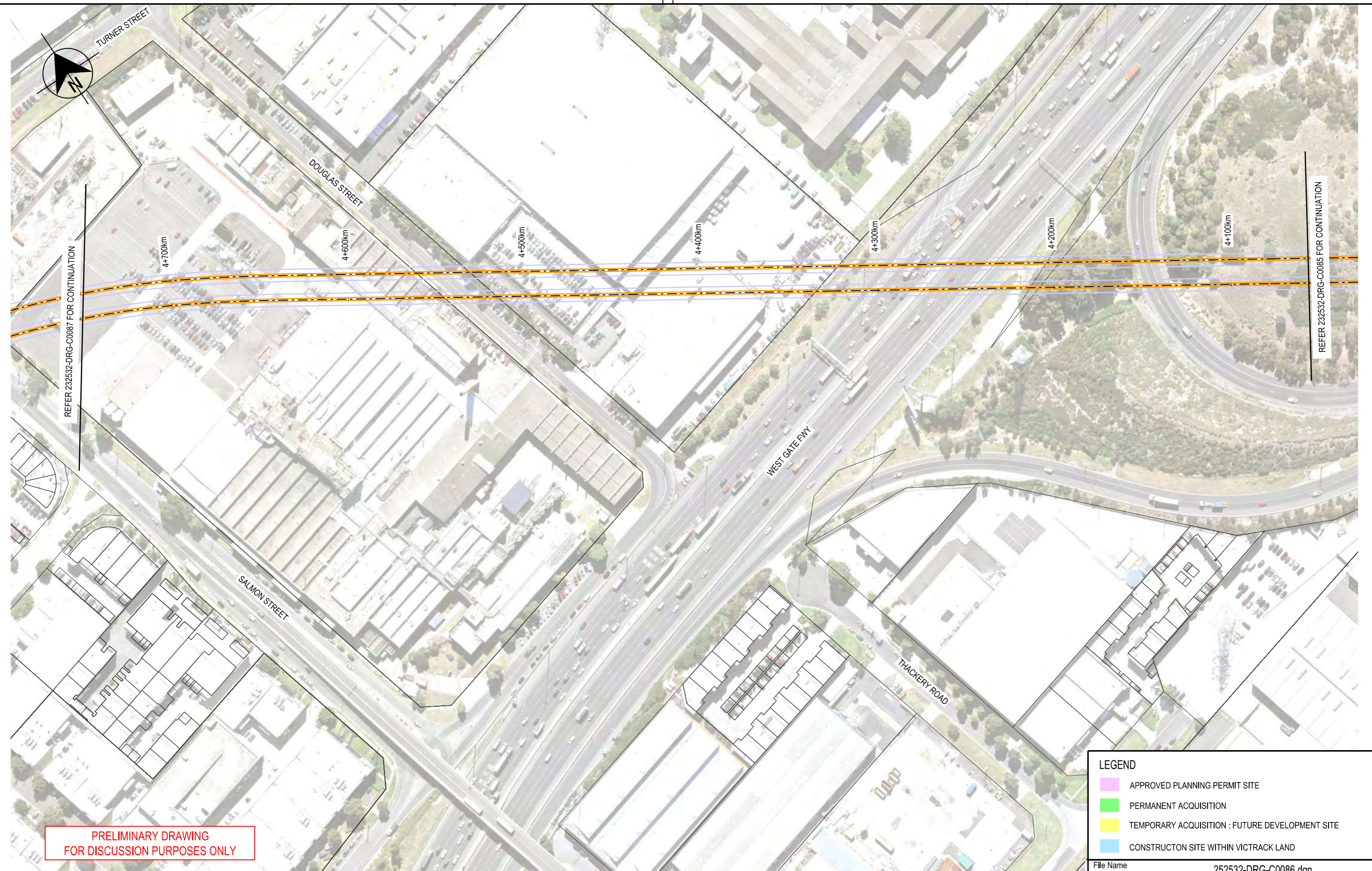
All written dimensions take precedence over scaled dimensions.

This drawing is provided only for the information of the person or organisation to whom Victrack provides it. It may not be provided to, or used by, any other person without Victrack's prior written consent.

RAILWAY TRACK AND CIVIL		
MELBOURNE		
FISHERMANS BEND METRO		
FEASIBILITY STUDY		
PREFERRED ALIGNMENT OPTION 5		
Up Location East. North. ID#	Down Location East. North. ID#	Datum MGA Z55

1:21:22 PM
 25/11/2016

Certified By: (BLOCK LETTERS) (SIGNATURE) (DATE)



PRELIMINARY DRAWING
FOR DISCUSSION PURPOSES ONLY

LEGEND	
	APPROVED PLANNING PERMIT SITE
	PERMANENT ACQUISITION
	TEMPORARY ACQUISITION : FUTURE DEVELOPMENT SITE
	CONSTRUCTION SITE WITHIN VICTRACK LAND

File Name		252532-DRG-C0086.dgn	
VicTrack ACCIS		Drawn By	Designed By
File Name		R.HOWELLS	R.HOWELLS
Sheet No.		Checked By	Ind. Review
01 of 01		J.BELCHER	
In Serv.		Approved	Approval Date
Scale 1:2000		Drawing Number	
Sheet Size A3		Revision	
		P1	

Revised By	In Serv	Rev.	Date	Description	Designed	Checked	Ind. Rev.	Approv.
AURECON	P1	15.11.16		PRELIMINARY ISSUE - POST ALIGNMENT SELECTION WORK SHOP	R.M.H.	J.E.B.		

Consultant



www.aurecongroup.com



Environment, Land, Water and Planning

This drawing has been prepared by, or compiled from information provided by, persons other than Victrack. To the maximum extent permissible by law, Victrack takes no responsibility for, and makes no representations in relation to, the completeness, accuracy or quality of any information contained in this drawing. Each user of this drawing releases Victrack from all and any loss, damage, cost, expense or liability in relation to the use of, or any reliance on, this drawing or the information contained in it.

All written dimensions take precedence over scaled dimensions.

This drawing is provided only for the information of the person or organisation to whom Victrack provides it. It may not be provided to, or used by, any other person without Victrack's prior written consent.

RAILWAY TRACK AND CIVIL		
MELBOURNE		
FISHERMANS BEND METRO		
FEASIBILITY STUDY		
PREFERRED ALIGNMENT OPTION 5		
Up Location	Down Location	Datum
East.	East.	MGA Z55
North.	North.	
ID#	ID#	

25/11/2016 1:22:26 PM

(DATE)

(SIGNATURE)

(BLOCK LETTERS)

Certified By:



REFER 232532-DRG-C0088 FOR CONTINUATION

REFER 232532-DRG-C0088 FOR CONTINUATION

MAJOR CONSTRUCTION SITE FOR TBM LAUNCH

GM HOLDEN

PRELIMINARY DRAWING FOR DISCUSSION PURPOSES ONLY

LEGEND	
	APPROVED PLANNING PERMIT SITE
	PERMANENT ACQUISITION
	TEMPORARY ACQUISITION : FUTURE DEVELOPMENT SITE
	CONSTRUCTION SITE WITHIN VICTRACK LAND

File Name 252532-DRG-C0087.dgn

8:55:36 AM
1/12/2016

Revised By	In Serv	Rev.	Date	Description	Designed	Checked	Ind. Rev.	Approv.
AURECON	P1	15.11.16	PRELIMINARY ISSUE - POST ALIGNMENT SELECTION WORK SHOP	R.M.H.	J.E.B.			

Consultant



www.aurecongroup.com



Environment, Land, Water and Planning

This drawing has been prepared by, or compiled from information provided by, persons other than Victrack. To the maximum extent permissible by law, Victrack takes no responsibility for, and makes no representations in relation to, the completeness, accuracy or quality of any information contained in this drawing. Each user of this drawing releases Victrack from all and any loss, damage, cost, expense or liability in relation to the use of, or any reliance on, this drawing or the information contained in it.

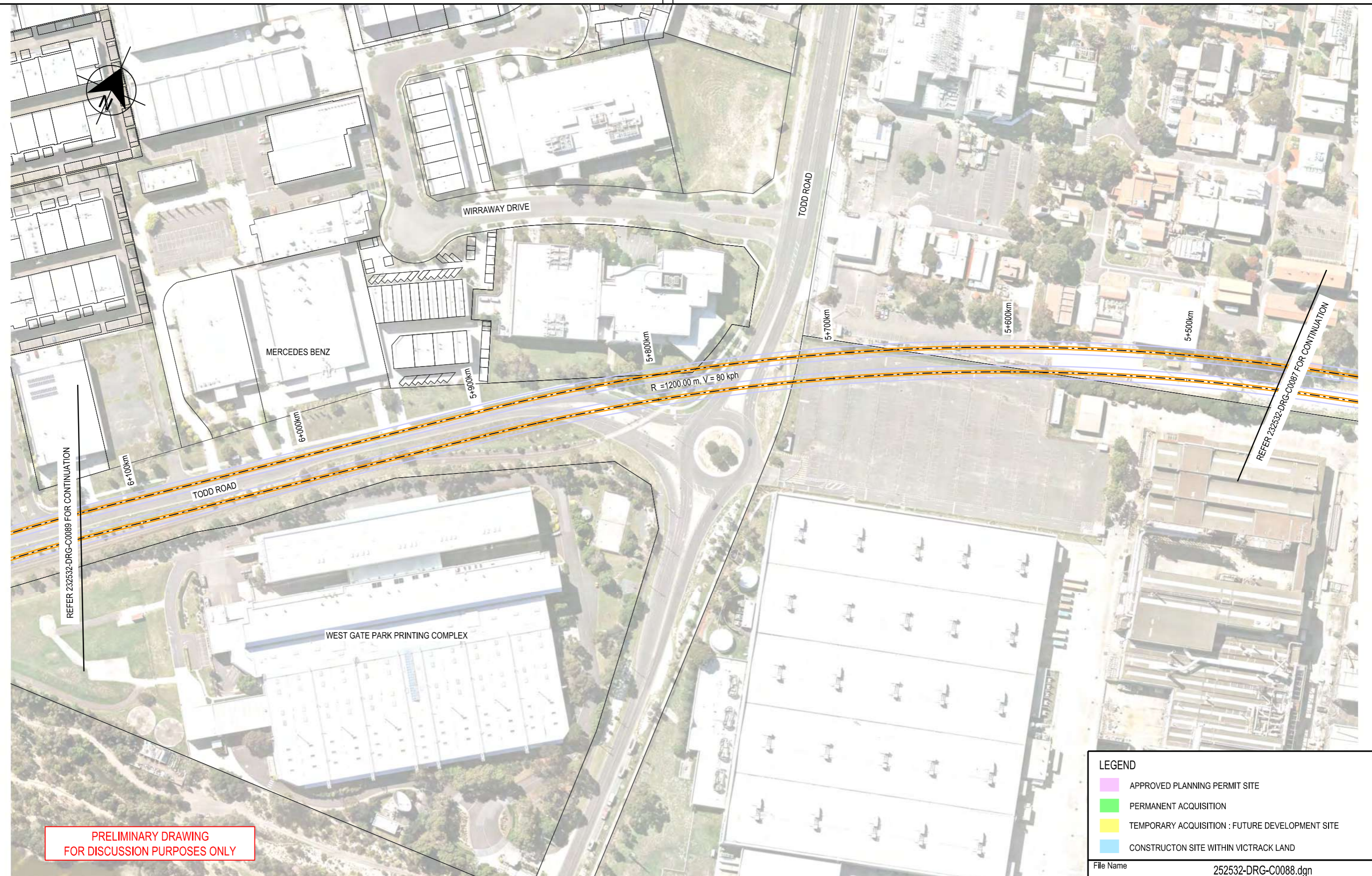
All written dimensions take precedence over scaled dimensions.

This drawing is provided only for the information of the person or organisation to whom Victrack provides it. It may not be provided to, or used by, any other person without Victrack's prior written consent.

RAILWAY TRACK AND CIVIL		
MELBOURNE		
FISHERMANS BEND METRO		
FEASIBILITY STUDY		
PREFERRED ALIGNMENT OPTION 5		
Up Location East. North. ID#	Down Location East. North. ID#	Datum MGA Z55

VicTrack		Drawn By	Designed By
ACC-SS		R.HOWELLS	R.HOWELLS
File Name	252532-DRG-C0087.dgn	Checked By	J.BELCHER
Sheet No.	01 of 01	Approved	
In Serv.		Drawing Number	
Scale 1:2000	Sheet Size A3	Revision	P1

Certified By: (BLOCK LETTERS) (SIGNATURE) (DATE)
 25/11/2016 1:24:25 PM



**PRELIMINARY DRAWING
FOR DISCUSSION PURPOSES ONLY**

LEGEND

- APPROVED PLANNING PERMIT SITE
- PERMANENT ACQUISITION
- TEMPORARY ACQUISITION : FUTURE DEVELOPMENT SITE
- CONSTRUCTION SITE WITHIN VICTRACK LAND

File Name: 252532-DRG-C0088.dgn

VicTrack <small>ACCIS</small>		Drawn By R.HOWELLS	Designed By R.HOWELLS
File Name: 252532-DRG-C0088.dgn		Checked By J.BELCHER	Ind. Review
Sheet No. 01 of 01		Approved	Approval Date
In Serv.		Drawing Number	
Scale: 1:2000	Sheet Size: A3	P1	

Revised By	In Serv	Rev.	Date	Description	Designed	Checked	Ind. Rev.	Approv.
AURECON	P1	15.11.16	PRELIMINARY ISSUE - POST ALIGNMENT SELECTION WORK SHOP	R.M.H.	J.E.B.			

Consultant

aurecon

www.aurecongroup.com

VICTORIA

State Government | Environment, Land, Water and Planning

This drawing has been prepared by, or compiled from information provided by, persons other than Victrack. To the maximum extent permissible by law, Victrack takes no responsibility for, and makes no representations in relation to, the completeness, accuracy or quality of any information contained in this drawing. Each user of this drawing releases Victrack from all and any loss, damage, cost, expense or liability in relation to the use of, or any reliance on, this drawing or the information contained in it.

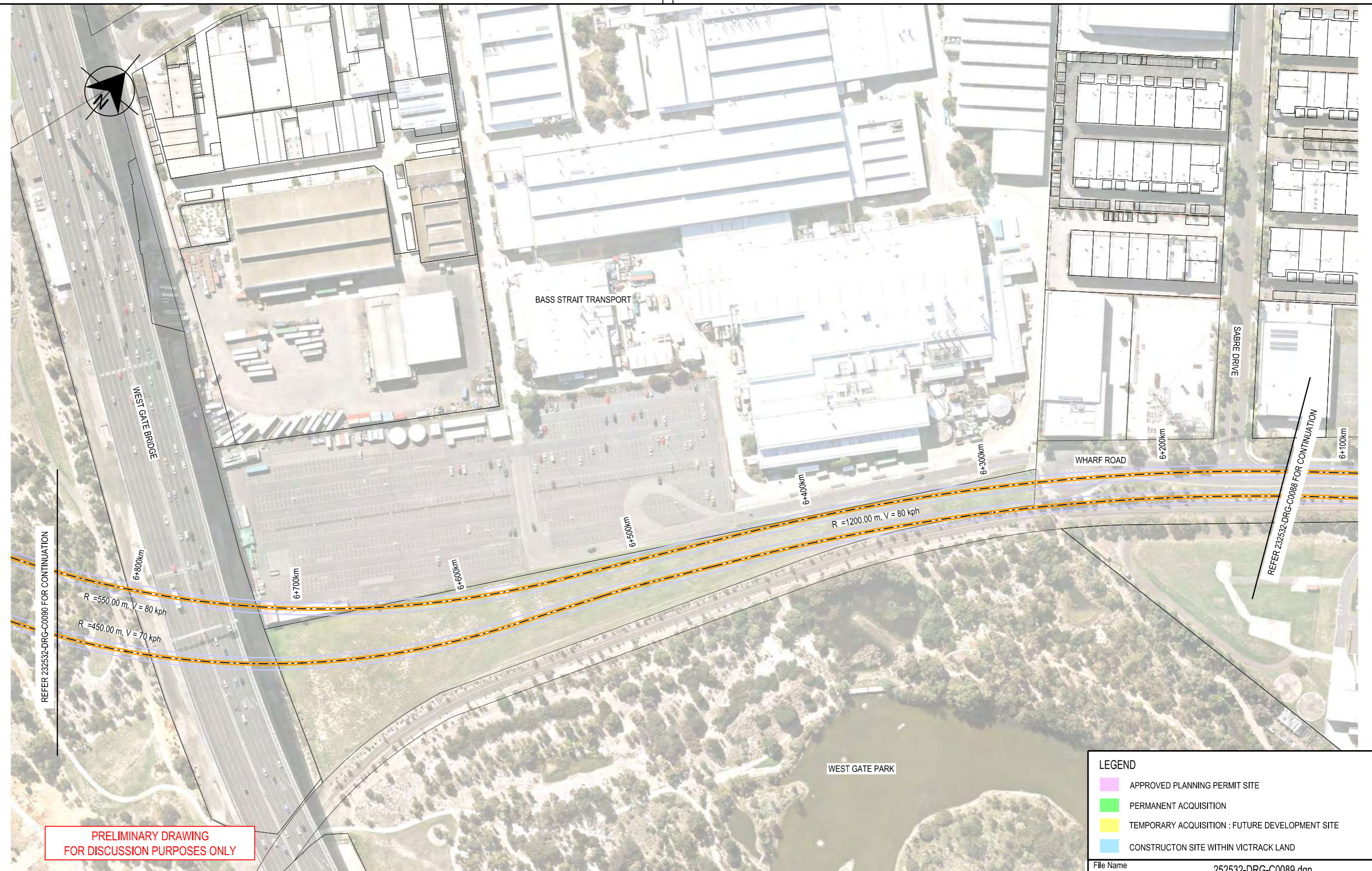
All written dimensions take precedence over scaled dimensions.

This drawing is provided only for the information of the person or organisation to whom Victrack provides it. It may not be provided to, or used by, any other person without Victrack's prior written consent.

RAILWAY TRACK AND CIVIL
MELBOURNE
FISHERMANS BEND METRO
FEASIBILITY STUDY
PREFERRED ALIGNMENT OPTION 5

Up Location East. North. ID#	Down Location East. North. ID#	Datum MGA Z55
---------------------------------------	---	------------------

Certified By: (BLOCK LETTERS) (SIGNATURE) (DATE)



PRELIMINARY DRAWING FOR DISCUSSION PURPOSES ONLY

LEGEND	
	APPROVED PLANNING PERMIT SITE
	PERMANENT ACQUISITION
	TEMPORARY ACQUISITION : FUTURE DEVELOPMENT SITE
	CONSTRUCTION SITE WITHIN VICTRACK LAND

File Name 252532-DRG-C0089.dgn

Revised By	In Serv	Rev.	Date	Description	Designed	Checked	Ind. Rev.	Approv.
AURECON	P1	15.11.16	PRELIMINARY ISSUE - POST ALIGNMENT SELECTION WORK SHOP	R.M.H.	J.E.B.			

Consultant



www.aurecongroup.com



Environment, Land, Water and Planning

This drawing has been prepared by, or compiled from information provided by, persons other than Victrack. To the maximum extent permissible by law, Victrack takes no responsibility for, and makes no representations in relation to, the completeness, accuracy or quality of any information contained in this drawing. Each user of this drawing releases Victrack from all and any loss, damage, cost, expense or liability in relation to the use of, or any reliance on, this drawing or the information contained in it.

All written dimensions take precedence over scaled dimensions.

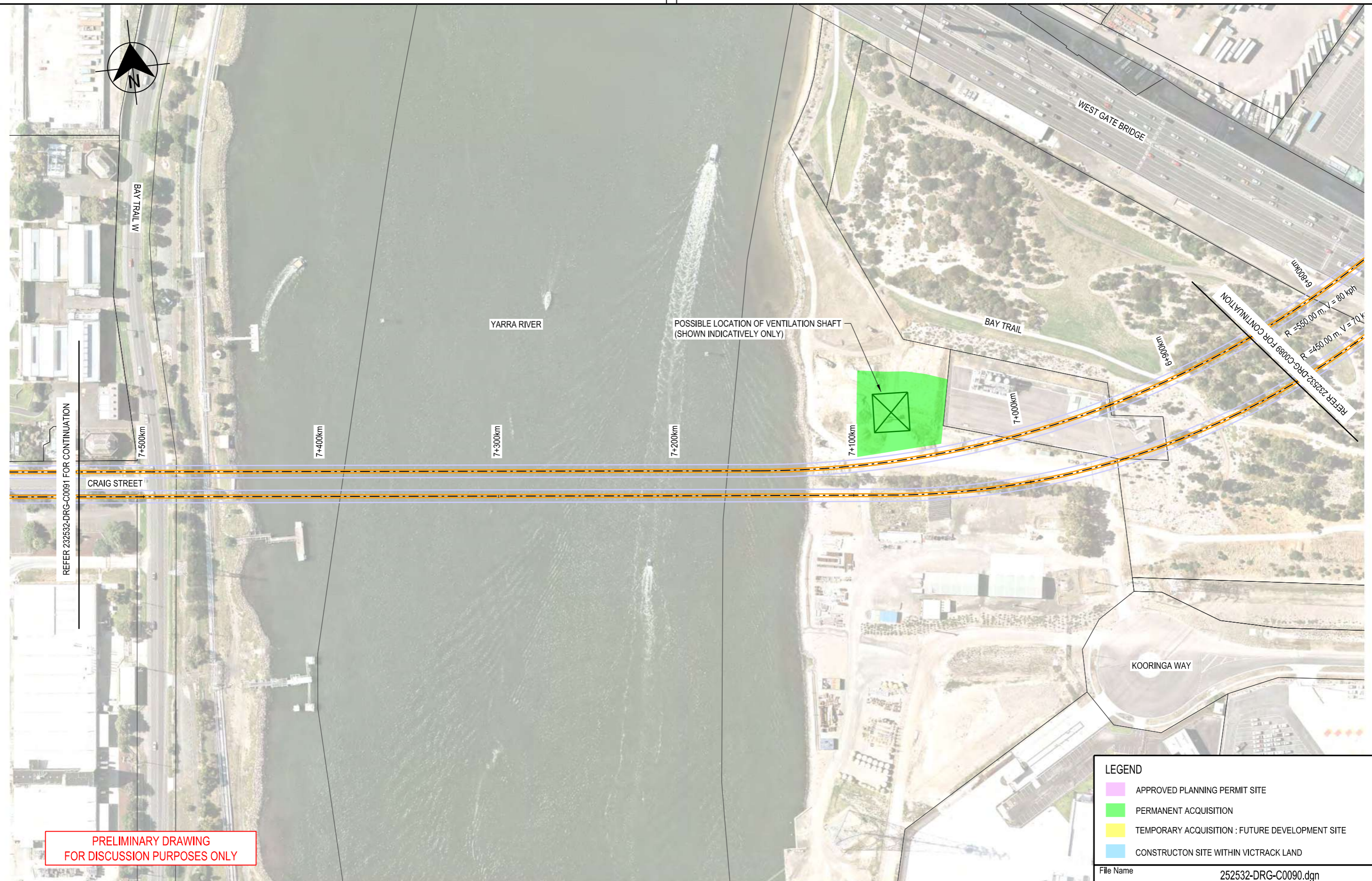
This drawing is provided only for the information of the person or organisation to whom Victrack provides it. It may not be provided to, or used by, any other person without Victrack's prior written consent.

RAILWAY TRACK AND CIVIL		
MELBOURNE		
FISHERMANS BEND METRO		
FEASIBILITY STUDY		
PREFERRED ALIGNMENT OPTION 5		
Up Location East North ID#	Down Location East North ID#	Datum MGA Z55

VicTrack		Drawn By	Designed By
ACC-SS		R.HOWELLS	R.HOWELLS
File Name	252532-DRG-C0089.dgn	Checked By	Ind. Review
Sheet No.	01 of 01	Approved	Approval Date
In Serv.		Drawing Number	Revision
Scale 1:2000	Sheet Size A3		P1

1:25:29 PM
25/11/2016

Certified By: (BLOCK LETTERS) (SIGNATURE) (DATE)



PRELIMINARY DRAWING FOR DISCUSSION PURPOSES ONLY

LEGEND	
	APPROVED PLANNING PERMIT SITE
	PERMANENT ACQUISITION
	TEMPORARY ACQUISITION : FUTURE DEVELOPMENT SITE
	CONSTRUCTION SITE WITHIN VICTRACK LAND

Rev.	In Serv	Rev.	Date	Description	Designed	Checked	Ind. Rev.	Approv.
1		P1	15.11.16	PRELIMINARY ISSUE - POST ALIGNMENT SELECTION WORK SHOP	R.M.H.	J.E.B.		

Consultant

www.aurecongroup.com

Environment, Land, Water and Planning

This drawing has been prepared by, or compiled from information provided by, persons other than Victrack. To the maximum extent permissible by law, Victrack takes no responsibility for, and makes no representations in relation to, the completeness, accuracy or quality of any information contained in this drawing. Each user of this drawing releases Victrack from all and any loss, damage, cost, expense or liability in relation to the use of, or any reliance on, this drawing or the information contained in it.

All written dimensions take precedence over scaled dimensions.

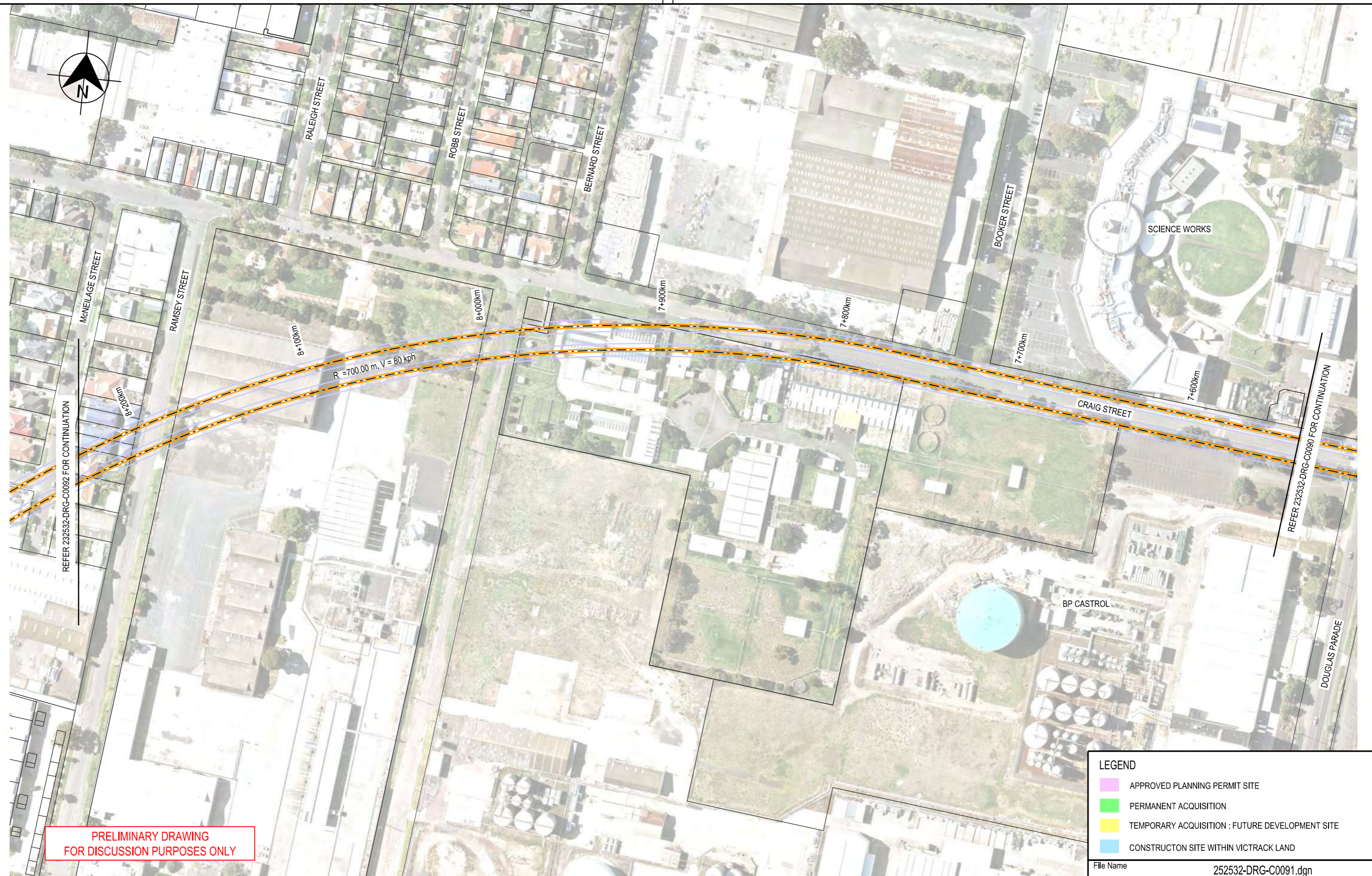
This drawing is provided only for the information of the person or organisation to whom Victrack provides it. It may not be provided to, or used by, any other person without Victrack's prior written consent.

RAILWAY TRACK AND CIVIL		
MELBOURNE FISHERMANS BEND METRO FEASIBILITY STUDY PREFERRED ALIGNMENT OPTION 5		
Up Location East. North. ID#	Down Location East. North. ID#	Datum MGA Z55

File Name 252532-DRG-C0090.dgn	
VicTrack ACCIS	Drawn By R.HOWELLS Checked By J.BELCHER Approved Scale 1:2000
File Name 252532-DRG-C0090.dgn Sheet No. 01 of 01 In Serv.	Designed By R.HOWELLS Ind. Review Approval Date Drawing Number Revision P1
Sheet Size A3	

1:26:28 PM
25/11/2016

Certified By: (BLOCK LETTERS)
(SIGNATURE)
(DATE)



**PRELIMINARY DRAWING
FOR DISCUSSION PURPOSES ONLY**

LEGEND	
	APPROVED PLANNING PERMIT SITE
	PERMANENT ACQUISITION
	TEMPORARY ACQUISITION : FUTURE DEVELOPMENT SITE
	CONSTRUCTION SITE WITHIN VICTRACK LAND

25/11/2016	2:19:37 PM									
AURECON	P1	15.11.16	PRELIMINARY ISSUE - POST ALIGNMENT SELECTION WORK SHOP	R.M.H.	J.E.B.					
Revised By	In Serv	Rev.	Date	Description	Designed	Checked	Ind. Rev.	Approv.		

Consultant

www.aurecongroup.com

Environment, Land, Water and Planning

This drawing has been prepared by, or compiled from information provided by, persons other than Victrack. To the maximum extent permissible by law, Victrack takes no responsibility for, and makes no representations in relation to, the completeness, accuracy or quality of any information contained in this drawing. Each user of this drawing releases Victrack from all and any loss, damage, cost, expense or liability in relation to the use of, or any reliance on, this drawing or the information contained in it.

All written dimensions take precedence over scaled dimensions.

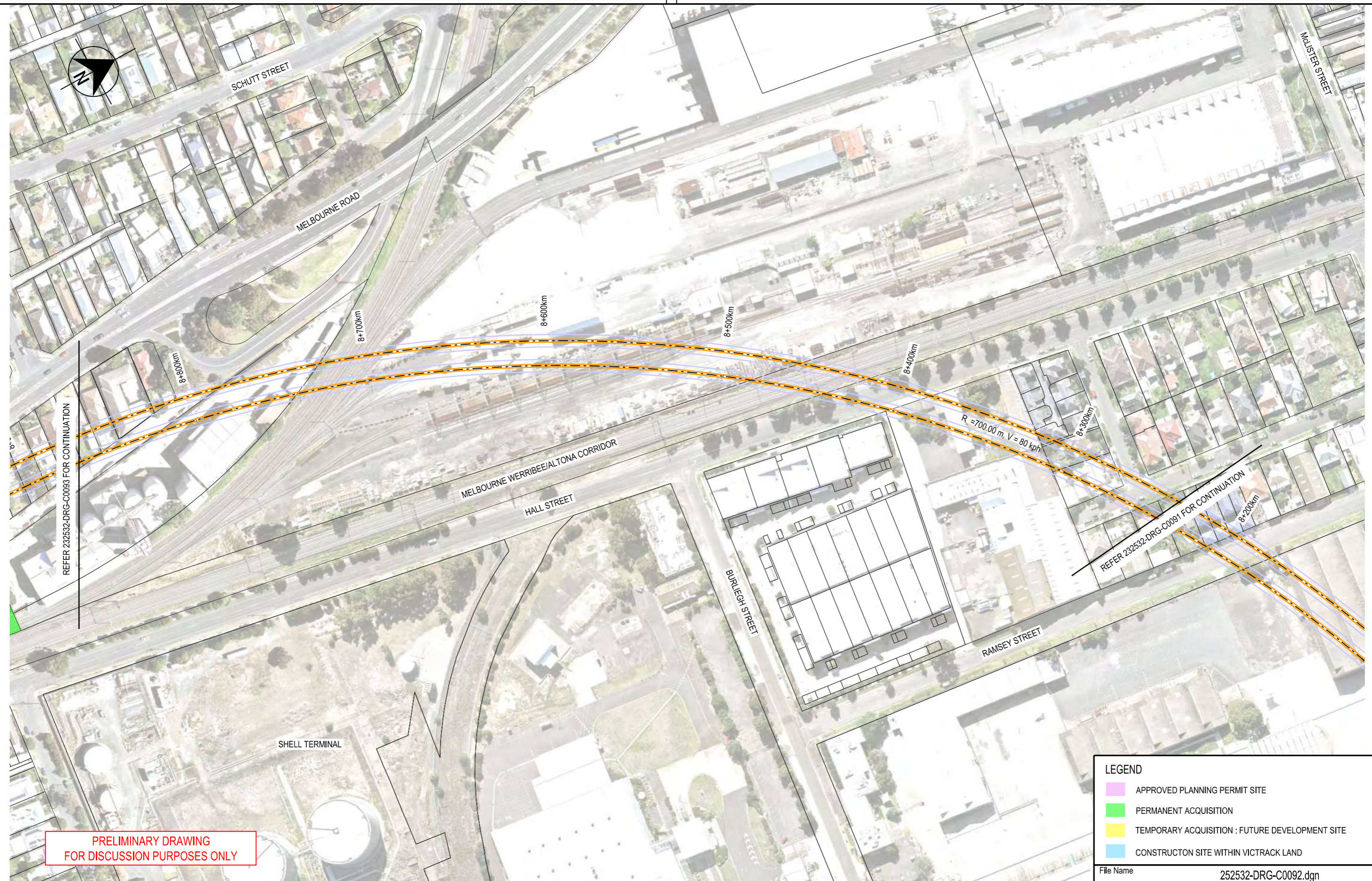
This drawing is provided only for the information of the person or organisation to whom Victrack provides it. It may not be provided to, or used by, any other person without Victrack's prior written consent.

RAILWAY TRACK AND CIVIL
MELBOURNE
FISHERMANS BEND METRO
FEASIBILITY STUDY
PREFERRED ALIGNMENT OPTION 5

Up Location East. North. ID#	Down Location East. North. ID#	Datum MGA Z55
------------------------------	--------------------------------	---------------

File Name 252532-DRG-C0091.dgn		Drawn By R.HOWELLS	Designed By R.HOWELLS
File Name 252532-DRG-C0091.dgn		Checked By J.BELCHER	Ind. Review
Sheet No. 01 of 01		Approved	Approval Date
In Serv.	Drawing Number	Revision P1	
Scale 1:2000	Sheet Size A3		

Certified By: (BLOCK LETTERS) (SIGNATURE) (DATE)



PRELIMINARY DRAWING
FOR DISCUSSION PURPOSES ONLY

LEGEND	
	APPROVED PLANNING PERMIT SITE
	PERMANENT ACQUISITION
	TEMPORARY ACQUISITION : FUTURE DEVELOPMENT SITE
	CONSTRUCTION SITE WITHIN VICTRACK LAND

25/11/2016 1:28:28 PM

Revised By	In Serv	Rev.	Date	Description	Designed	Checked	Ind. Rev.	Approv.
AURECON	P1	15.11.16	PRELIMINARY ISSUE - POST ALIGNMENT SELECTION WORK SHOP	R.M.H.	J.E.B.			

Consultant



www.aurecongroup.com



Environment, Land, Water and Planning

This drawing has been prepared by, or compiled from information provided by, persons other than Victrack. To the maximum extent permissible by law, Victrack takes no responsibility for, and makes no representations in relation to, the completeness, accuracy or quality of any information contained in this drawing. Each user of this drawing releases Victrack from all and any loss, damage, cost, expense or liability in relation to the use of, or any reliance on, this drawing or the information contained in it.

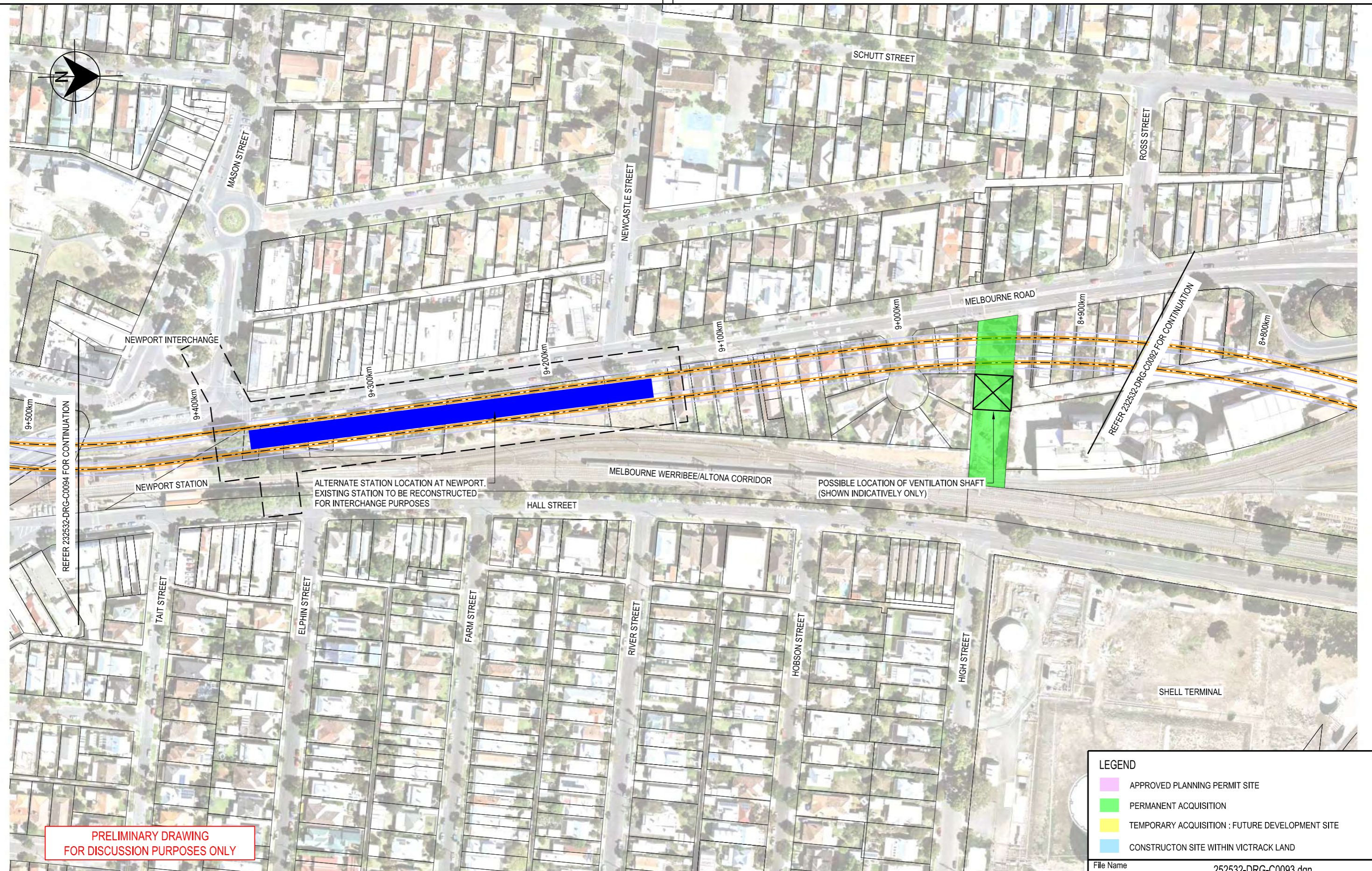
All written dimensions take precedence over scaled dimensions.

This drawing is provided only for the information of the person or organisation to whom Victrack provides it. It may not be provided to, or used by, any other person without Victrack's prior written consent.

RAILWAY TRACK AND CIVIL		
MELBOURNE FISHERMANS BEND METRO FEASIBILITY STUDY PREFERRED ALIGNMENT OPTION 5		
Up Location East. North. ID#	Down Location East. North. ID#	Datum MGA Z55

File Name 252532-DRG-C0092.dgn		Drawn By R.HOWELLS	Designed By R.HOWELLS
File Name 252532-DRG-C0092.dgn		Checked By J.BELCHER	Ind. Review
Sheet No. 01 of 01		Approved	Approval Date
In Serv.		Drawing Number	
Scale 1:2000	Sheet Size A3	Revision P1	

Certified By: (BLOCK LETTERS)
(SIGNATURE)
(DATE)



**PRELIMINARY DRAWING
FOR DISCUSSION PURPOSES ONLY**

LEGEND

- APPROVED PLANNING PERMIT SITE
- PERMANENT ACQUISITION
- TEMPORARY ACQUISITION : FUTURE DEVELOPMENT SITE
- CONSTRUCTION SITE WITHIN VICTRACK LAND

25/11/2016 1:29:20 PM

Revised By	In Serv	Rev.	Date	Description	Designed	Checked	Ind. Rev.	Approv.
AURECON	P1	15.11.16	PRELIMINARY ISSUE - POST ALIGNMENT SELECTION WORK SHOP	R.M.H.	J.E.B.			

Consultant

aurecon
www.aurecongroup.com

VICTORIA State Government | Environment, Land, Water and Planning

This drawing has been prepared by, or compiled from information provided by, persons other than Victrack. To the maximum extent permissible by law, Victrack takes no responsibility for, and makes no representations in relation to, the completeness, accuracy or quality of any information contained in this drawing. Each user of this drawing releases Victrack from all and any loss, damage, cost, expense or liability in relation to the use of, or any reliance on, this drawing or the information contained in it.

All written dimensions take precedence over scaled dimensions.

This drawing is provided only for the information of the person or organisation to whom Victrack provides it. It may not be provided to, or used by, any other person without Victrack's prior written consent.

RAILWAY TRACK AND CIVIL

MELBOURNE

FISHERMANS BEND METRO
FEASIBILITY STUDY
PREFERRED ALIGNMENT OPTION 5

Up Location East North ID#	Down Location East North ID#	Datum MGA Z55
----------------------------	------------------------------	---------------

File Name 252532-DRG-C0093.dgn

VicTrack ACCIS

Drawn By R.HOWELLS	Designed By R.HOWELLS
Checked By J.BELCHER	Ind. Review
Approved	Approval Date
Drawing Number	Revision P1

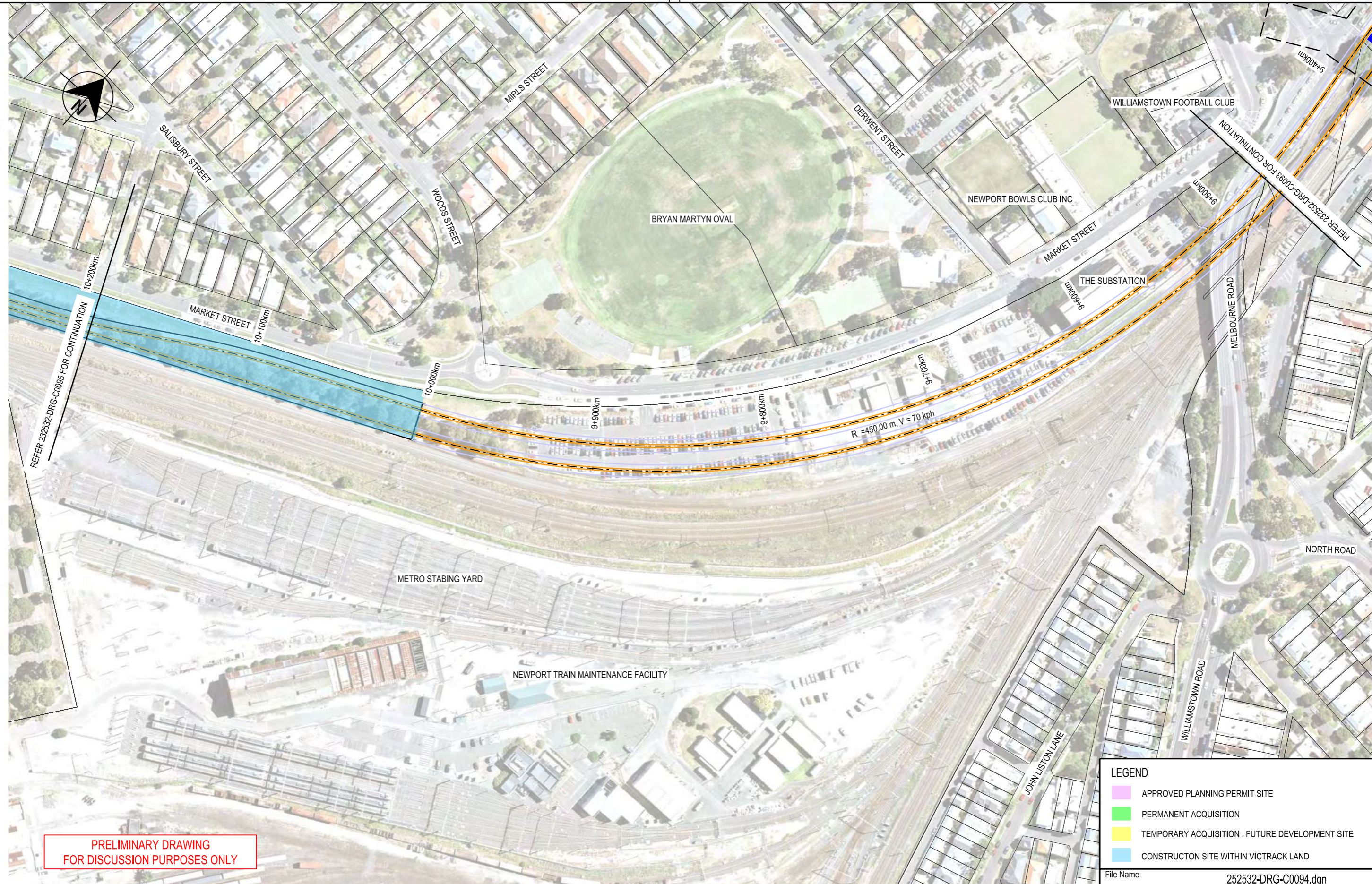
File Name 252532-DRG-C0093.dgn
Sheet No. 01 of 01
In Serv.
Scale 1:2000 Sheet Size A3

(DATE)

(SIGNATURE)

(BLOCK LETTERS)

Certified By:



PRELIMINARY DRAWING
FOR DISCUSSION PURPOSES ONLY

LEGEND	
	APPROVED PLANNING PERMIT SITE
	PERMANENT ACQUISITION
	TEMPORARY ACQUISITION : FUTURE DEVELOPMENT SITE
	CONSTRUCTION SITE WITHIN VICTRACK LAND

File Name 252532-DRG-C0094.dgn

25/11/2016 1:30:23 PM

Revised By	In Serv	Rev.	Date	Description	Designed	Checked	Ind. Rev.	Approv.
AURECON		P1	15.11.16	PRELIMINARY ISSUE - POST ALIGNMENT SELECTION WORK SHOP	R.M.H.	J.E.B.		

Consultant

aurecon
www.aurecongroup.com

VICTORIA State Government
Environment, Land, Water and Planning

This drawing has been prepared by, or compiled from information provided by, persons other than Victrack. To the maximum extent permissible by law, Victrack takes no responsibility for, and makes no representations in relation to, the completeness, accuracy or quality of any information contained in this drawing. Each user of this drawing releases Victrack from all and any loss, damage, cost, expense or liability in relation to the use of, or any reliance on, this drawing or the information contained in it.

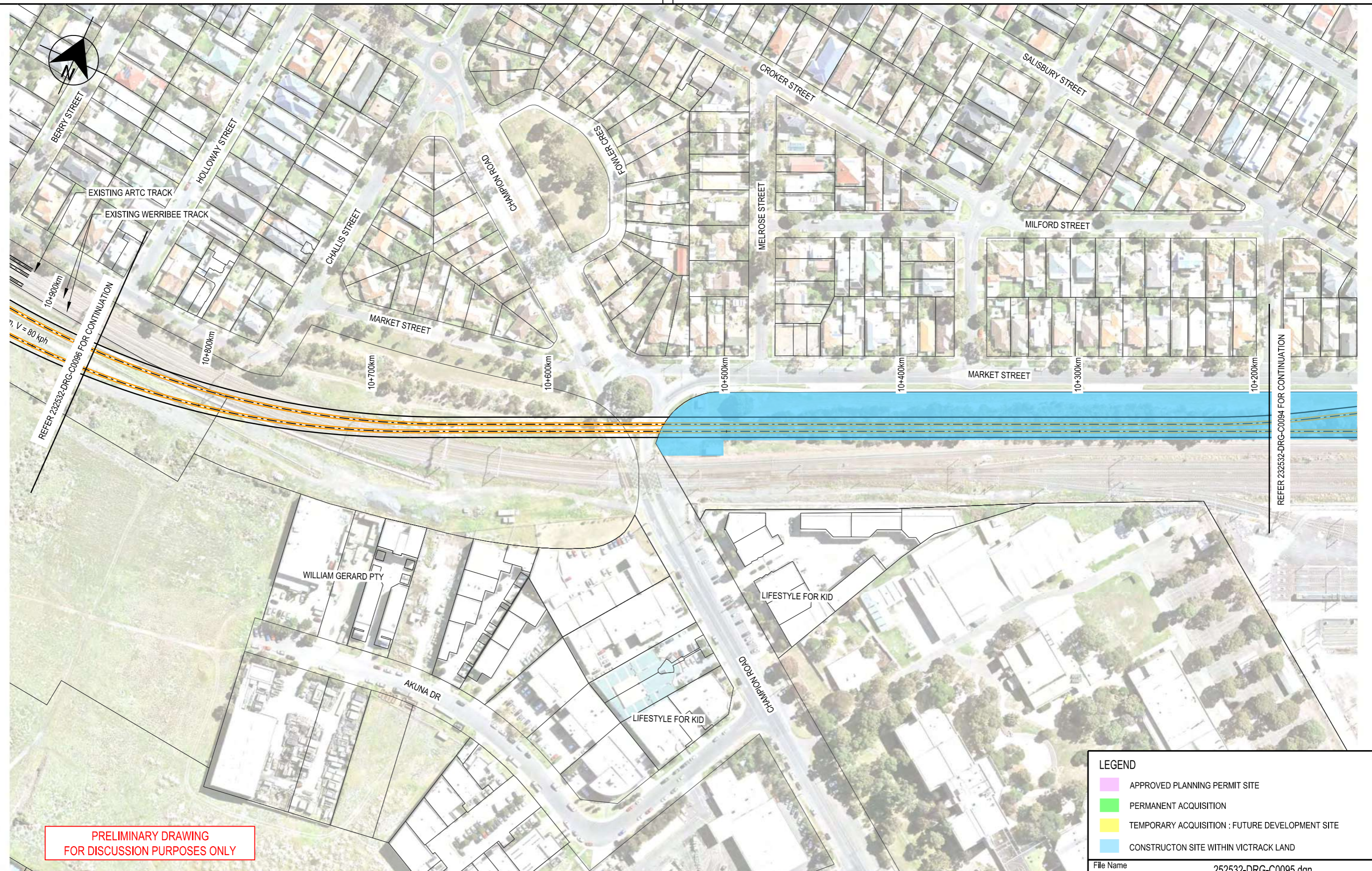
All written dimensions take precedence over scaled dimensions.

This drawing is provided only for the information of the person or organisation to whom Victrack provides it. It may not be provided to, or used by, any other person without Victrack's prior written consent.

RAILWAY TRACK AND CIVIL		
MELBOURNE		
FISHERMANS BEND METRO		
FEASIBILITY STUDY		
PREFERRED ALIGNMENT OPTION 5		
Up Location East North ID#	Down Location East North ID#	Datum MGA Z55

VicTrack ACCIS		Drawn By R.HOWELLS	Designed By R.HOWELLS
File Name 252532-DRG-C0094.dgn	Checked By J.BELCHER	Approved	Approval Date
Sheet No. 01 of 01	Drawing Number		
In Serv.	Revision P1		
Scale 1:2000	Sheet Size A3		

Certified By: (BLOCK LETTERS)
(SIGNATURE)
(DATE)



PRELIMINARY DRAWING
FOR DISCUSSION PURPOSES ONLY

LEGEND	
	APPROVED PLANNING PERMIT SITE
	PERMANENT ACQUISITION
	TEMPORARY ACQUISITION : FUTURE DEVELOPMENT SITE
	CONSTRUCTION SITE WITHIN VICTRACK LAND

File Name		252532-DRG-C0095.dgn	
VicTrack <small>ACCESS</small>		Drawn By	Designed By
File Name		R.HOWELLS	R.HOWELLS
Sheet No.		Checked By	Ind. Review
01 of 01		J.BELCHER	
In Serv.		Approved	Approval Date
Scale 1:2000		Drawing Number	Revision
Sheet Size A3			P1

Revised By	In Serv	Rev.	Date	Description	Designed	Checked	Ind. Rev.	Approv.
AURECON		P1	15.11.16	PRELIMINARY ISSUE - POST ALIGNMENT SELECTION WORK SHOP	R.M.H.	J.E.B.		

Consultant



www.aurecongroup.com



Environment, Land, Water and Planning

This drawing has been prepared by, or compiled from information provided by, persons other than Victrack. To the maximum extent permissible by law, Victrack takes no responsibility for, and makes no representations in relation to, the completeness, accuracy or quality of any information contained in this drawing. Each user of this drawing releases Victrack from all and any loss, damage, cost, expense or liability in relation to the use of, or any reliance on, this drawing or the information contained in it.

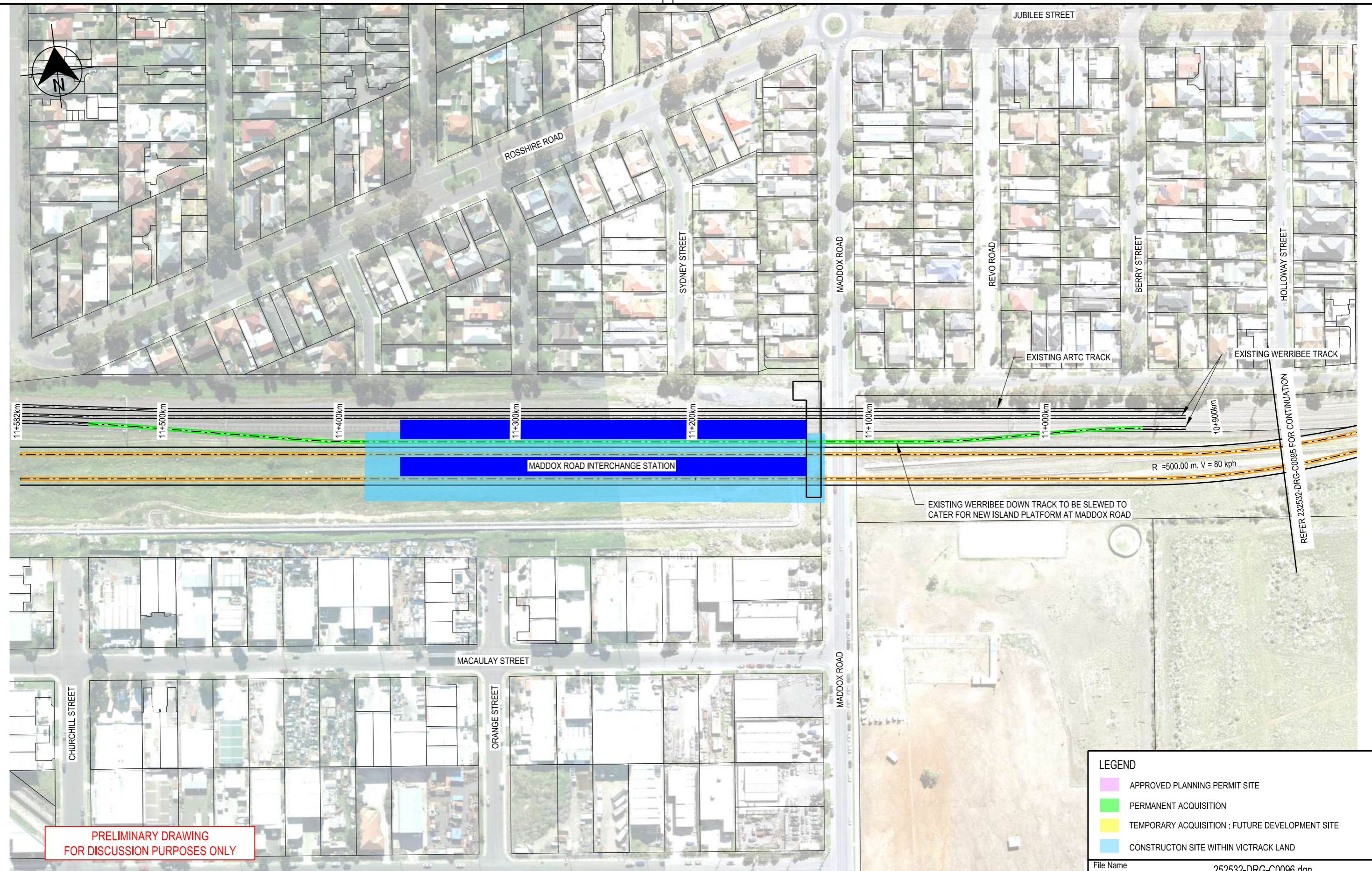
All written dimensions take precedence over scaled dimensions.

This drawing is provided only for the information of the person or organisation to whom Victrack provides it. It may not be provided to, or used by, any other person without Victrack's prior written consent.

RAILWAY TRACK AND CIVIL		
MELBOURNE		
FISHERMANS BEND METRO		
FEASIBILITY STUDY		
PREFERRED ALIGNMENT OPTION 5		
Up Location East. North. ID#	Down Location East. North. ID#	Datum MGA Z55

25/11/2016 1:30:45 PM

(DATE)
 (SIGNATURE)
 (BLOCK LETTERS)
 Certified By:



LEGEND	
	APPROVED PLANNING PERMIT SITE
	PERMANENT ACQUISITION
	TEMPORARY ACQUISITION : FUTURE DEVELOPMENT SITE
	CONSTRUCTION SITE WITHIN VICTRACK LAND

File Name		252532-DRG-C0096.dgn	
VicTrack <small>ACCIS</small>		Drawn By	Designed By
File Name		R.HOWELLS	R.HOWELLS
Sheet No.		Checked By	Ind. Review
01 of 01		J.BELCHER	
In Serv.		Approved	Approval Date
Scale 1:2000		Drawing Number	
Sheet Size A3		Revision	
		P1	

AURECON		P1	15.11.16	PRELIMINARY ISSUE - POST ALIGNMENT SELECTION WORK SHOP	R.M.H.	J.E.B.		
Revised By	In Serv	Rev.	Date	Description	Designed	Checked	Ind. Rev.	Approv.

Consultant



www.aurecongroup.com



Environment, Land, Water and Planning

This drawing has been prepared by, or compiled from information provided by, persons other than Victrack. To the maximum extent permissible by law, Victrack takes no responsibility for, and makes no representations in relation to, the completeness, accuracy or quality of any information contained in this drawing. Each user of this drawing releases Victrack from all and any loss, damage, cost, expense or liability in relation to the use of, or any reliance on, this drawing or the information contained in it.

All written dimensions take precedence over scaled dimensions.

This drawing is provided only for the information of the person or organisation to whom Victrack provides it. It may not be provided to, or used by, any other person without Victrack's prior written consent.

RAILWAY TRACK AND CIVIL		
MELBOURNE		
FISHERMANS BEND METRO		
FEASIBILITY STUDY		
PREFERRED ALIGNMENT OPTION 5		
Up Location East. North. ID#	Down Location East. North. ID#	Datum MGA Z55

8:54:14 AM
 1/12/2016