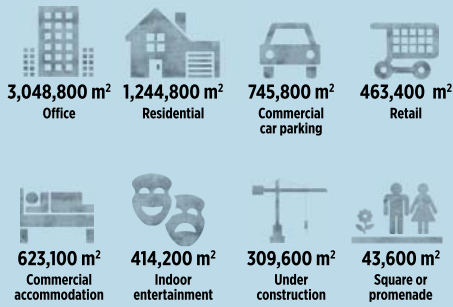


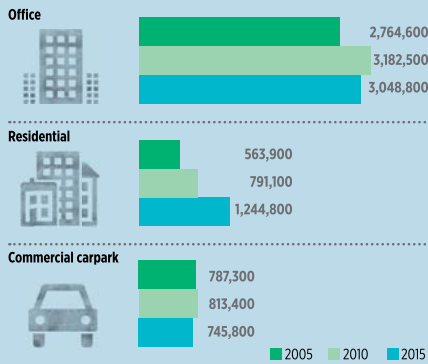
MELBOURNE CBD CLUE 2015 REPORT

The Melbourne CBD is Victoria's economical, commercial and cultural centre. It is a complex area serving a diverse community and with many varied uses and functions, including finance, business, retail, government administration and entertainment operating 24 hours a day. It contains 9,100 business locations employing nearly half of the workforce in the municipality. The over-supply of office space in the CBD during the 1990s, coupled with the City of Melbourne's Postcode 3000 initiative, led to resurgence in inner city living and the area now has the largest residential dwelling stock.

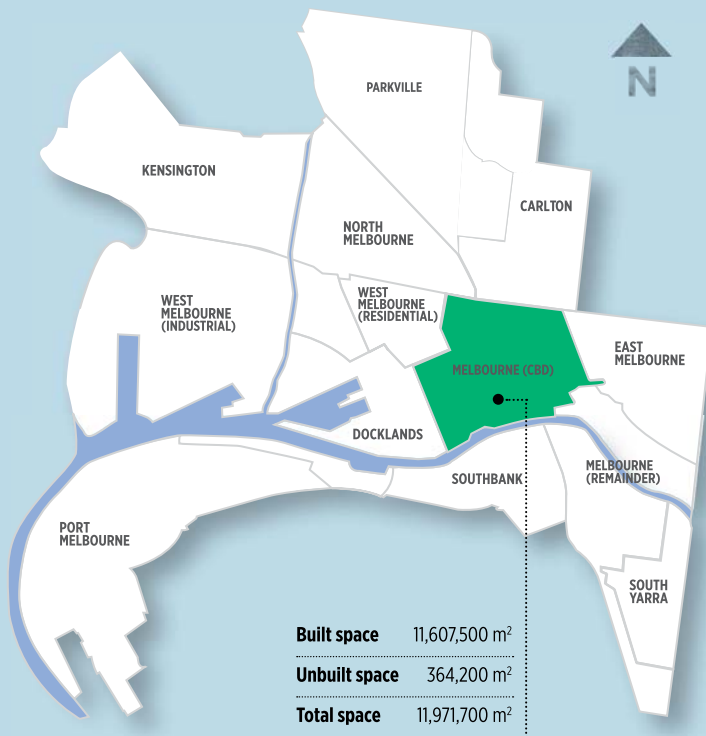
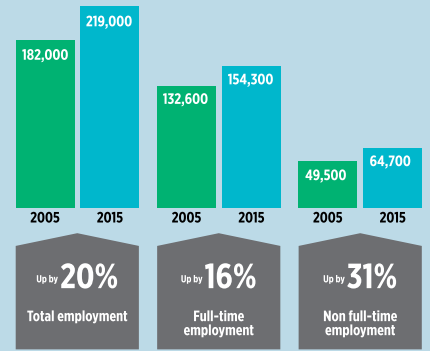
SPACE AT A GLANCE



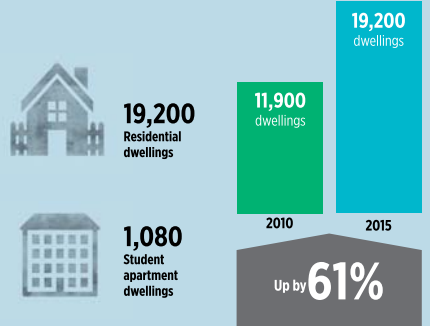
TOP 3 BUILT SPACE USES (m²)



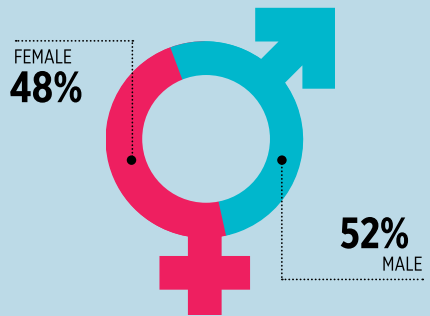
EMPLOYMENT AT A GLANCE



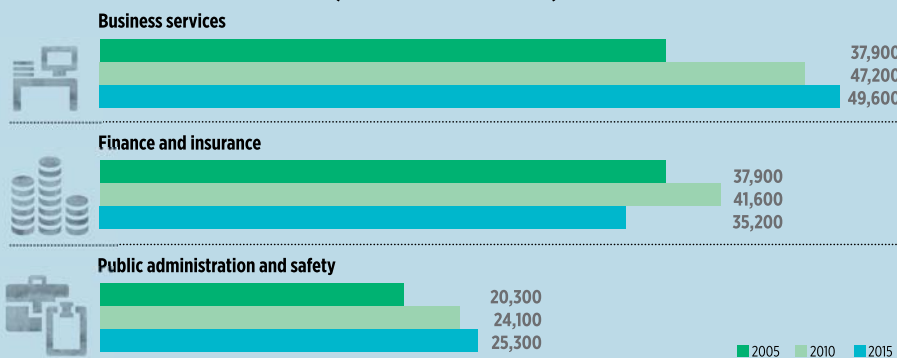
RESIDENTIAL



WORKFORCE



TOP 3 EMPLOYING INDUSTRIES (NUMBER OF PEOPLE)



ABOUT CLUE

The Census of Land Use and Employment (CLUE) provides a portrait of the changing nature of life in our city. CLUE offers information about economic activity, tracks changes in land use, and identifies key trends in employment. Published every two years, the small area reports and whole-of-municipality summary report are based on information collected from businesses in the municipality.