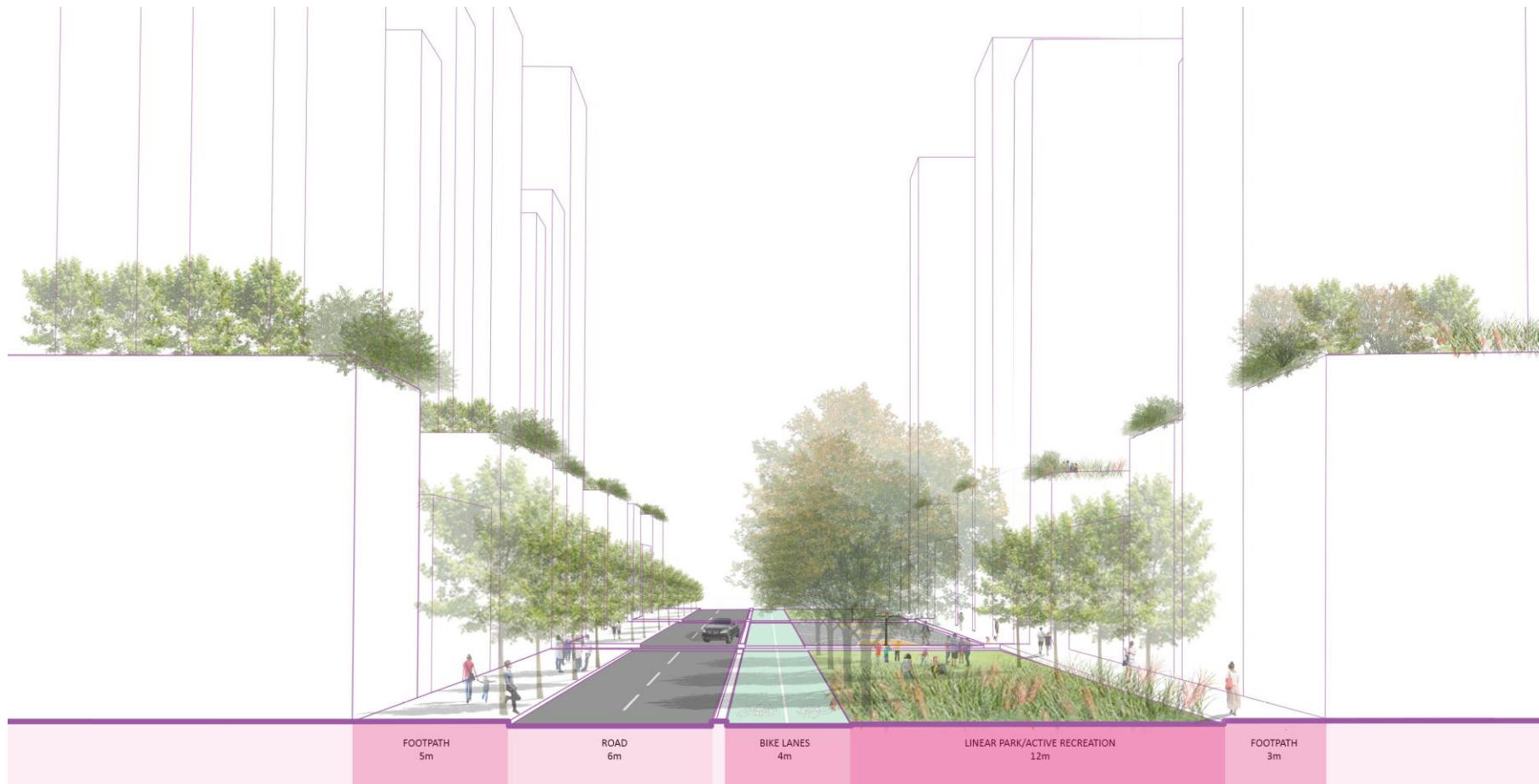




Recreation loops along Linear Park Network – Fishermans Bend



Street Section incorporating a Linear Park, dual lane road, cycle and pedestrian links (p. 70)

Linear Park Examples



Southbank Boulevard, Southbank – commencing construction July 2018 (Source: City of Melbourne)

- Use of boardwalk paths to allow for both deep planting and established tree canopies whilst also providing sufficient space for pedestrians and/or cyclists
- Boardwalk design concept could also be applied to other streets within the proposed hierarchy



Surat Linear Park, India (Source: surties.com)



Nine Elms, London – under construction (Source: The Guardian)

Public Space Strategy Linear Park Examples



Location and source unknown



Location and source unknown



Madrid Rio in Madrid, Spain (West 8 and MRIO Arquitectos)

This six-kilometer linear park spanning a sunken motorway connects Madrid's city center and adjacent neighborhoods to the newly rehabilitated Manzanares River. After eight years of delays, dust, noise and traffic jams, residents are finally enjoying unique public spaces and sport facilities.



Las Ramblas, Barcelona, Spain (source; unknown)



WSUD (source and location unknown)



Highline Park, New York, USA (source; unknown)

Although not at grade the width, functions or uses along the park could be replicated in a high density environment in Fishermans Bend.



Source and location unknown



Recoleta, Buenos Aires, Argentina (Source: T. Berry)



Gyeongui Line Forest Park, Seoul, South Korea (Source: skycrapercity.com)



The Underline, Miami, Florida, USA (Source: <https://www.theunderline.org/>)



Victoria Street, Linear Park, Auckland (Source: www.greaterauckland.org.nz/)

A substantial change in corridor function and space allocation away from a vehicle dominated through route to an emphasis on pedestrian-oriented public realm. It ensures that pedestrians are truly at the top of the multi-modal network approach to city centre transport planning.



The Goods Line , Sydney (Source: Property NSW)

A shared pedestrian and cycle path, and green public space, connecting Ultimo with Darling Harbour. It's surrounded by some of Sydney's most important cultural, educational and media institutions. The line provides a traffic-free, accessible thoroughfare from Central Station to Darling Harbour. It connects more than 80,000 tertiary students, locals and visitors to the many major attractions of Sydney's much-loved Darling Harbour. From Central, follow the signs for the South Concourse and UTS through the Devonshire Street tunnel, beneath George Street and continue to Ultimo Road.



Victoria Park, Zetland, NSW (source: Google Street view)

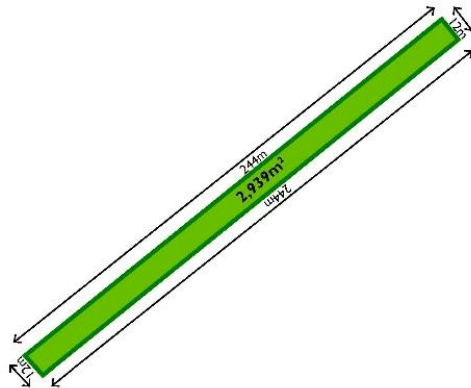


Howe Parade, Port Melbourne – Linear Park in low density area

City of Port Phillip Linear Parks – Residential (low to medium density)

LINEAR PARK

PROPOSED OPEN SPACE: M09 - BUCKHURST STREET WEST



HIERARCHY:

- Linear park

REQUIREMENTS / FUNCTION:

- Green/hard landscaped areas with play spaces
- Improve pedestrian connections, provide safe routes to schools
- Community gardens and edible landscaping (e.g. Burnley Backyard, Pop Up Patch Federation Square)

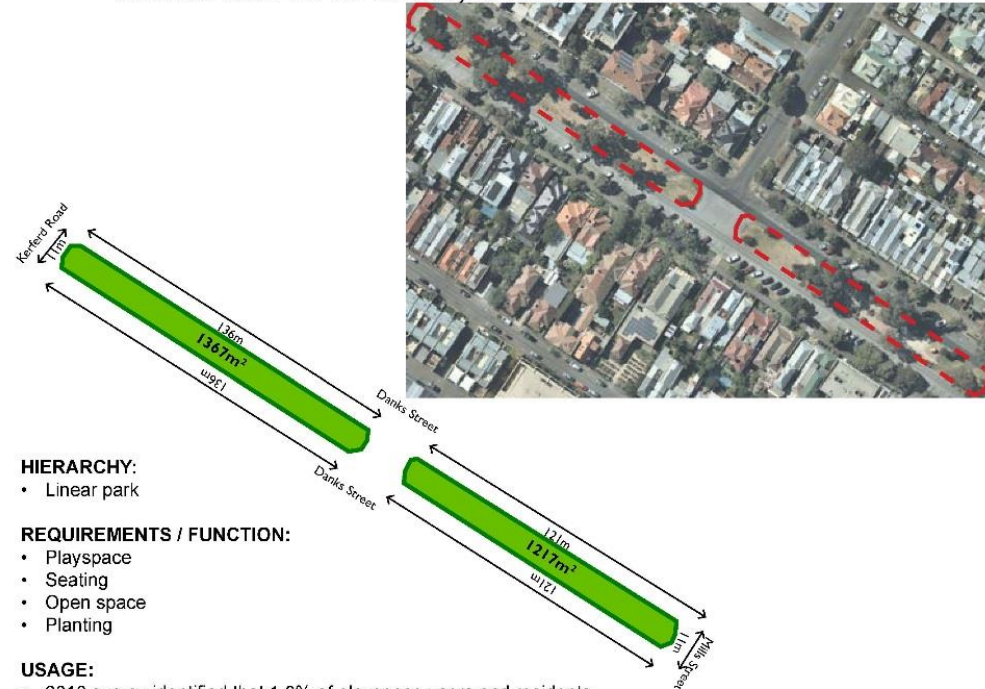
OPPORTUNITIES / VISION:

- Vibrant green spine running through Buckhurst Street, and the decked 'highline' park, connecting community facilities, activity centres and residents.
- Surrounded by creative industries.

CONSTRAINTS:

- Overshadowing controls N/A

EXISTING OPEN SPACE: DANKS STREET MEDIANS, ALBERT PARK



HIERARCHY:

- Linear park

REQUIREMENTS / FUNCTION:

- Playspace
- Seating
- Open space
- Planting

USAGE:

- 2010 survey identified that 1.6% of playspace users and residents favoured this playspace within the City of Port Phillip.

OPPORTUNITIES:

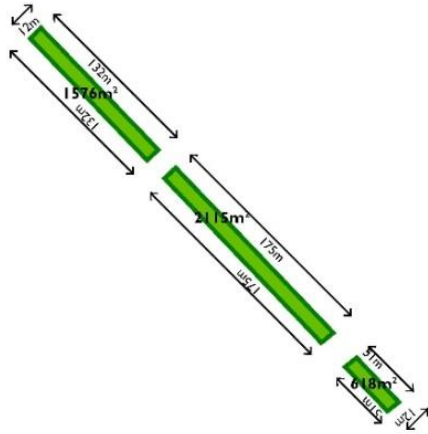
- Playspace is fenced given proximity to road (either side of park is single lane with on-street parking).

CONSTRAINTS:

- *Play Space Strategy 2011* identified the need to provide better pedestrian access

LINEAR PARK

PROPOSED OPEN SPACE: BOUNDARY STREET LINEAR PARK



HIERARCHY:

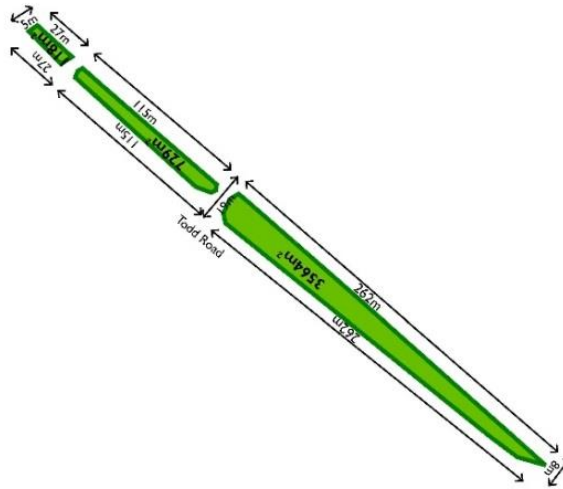
- Linear park

REQUIREMENTS / FUNCTION:

OPPORTUNITIES / VISION:

- Enhance Boundary Street as linear link and key north south pedestrian and cycling route. Links to Montague in the south and Port Melbourne rail reserve.

EXISTING OPEN SPACE: TODD ROAD NATURESTRIPS, PORT MELBOURNE



HIERARCHY:

- Linear park

REQUIREMENTS / FUNCTION:

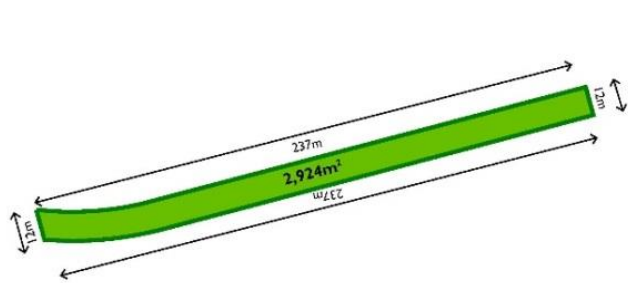
- Pedestrian and cycling route from the Sandridge Foreshore
- Public transport stops
- Private naturestrips
- Planting

Sandridge Precinct

LINEAR PARK

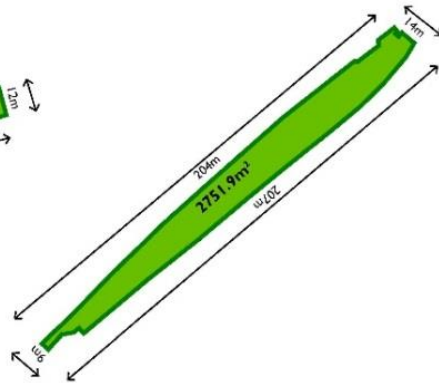
PROPOSED OPEN SPACE:

W18A - WOOLBOARD ROAD LINEAR PARK EAST



EXISTING OPEN SPACE:

BEACON COVE LINEAR LIGHT RAIL, PORT MELBOURNE



HIERARCHY:

- Linear park

REQUIREMENTS / FUNCTION:

- Green spine
- Mix of passive and active uses (e.g. playground, spaces to read)

OPPORTUNITIES / VISION:

- Development fronting Woolboard Road will overlook the new east-west green link, heavily landscaped to provide a green outlook and visual buffer to the transmission lines.

HIERARCHY:

- Linear park

REQUIREMENTS / FUNCTION:

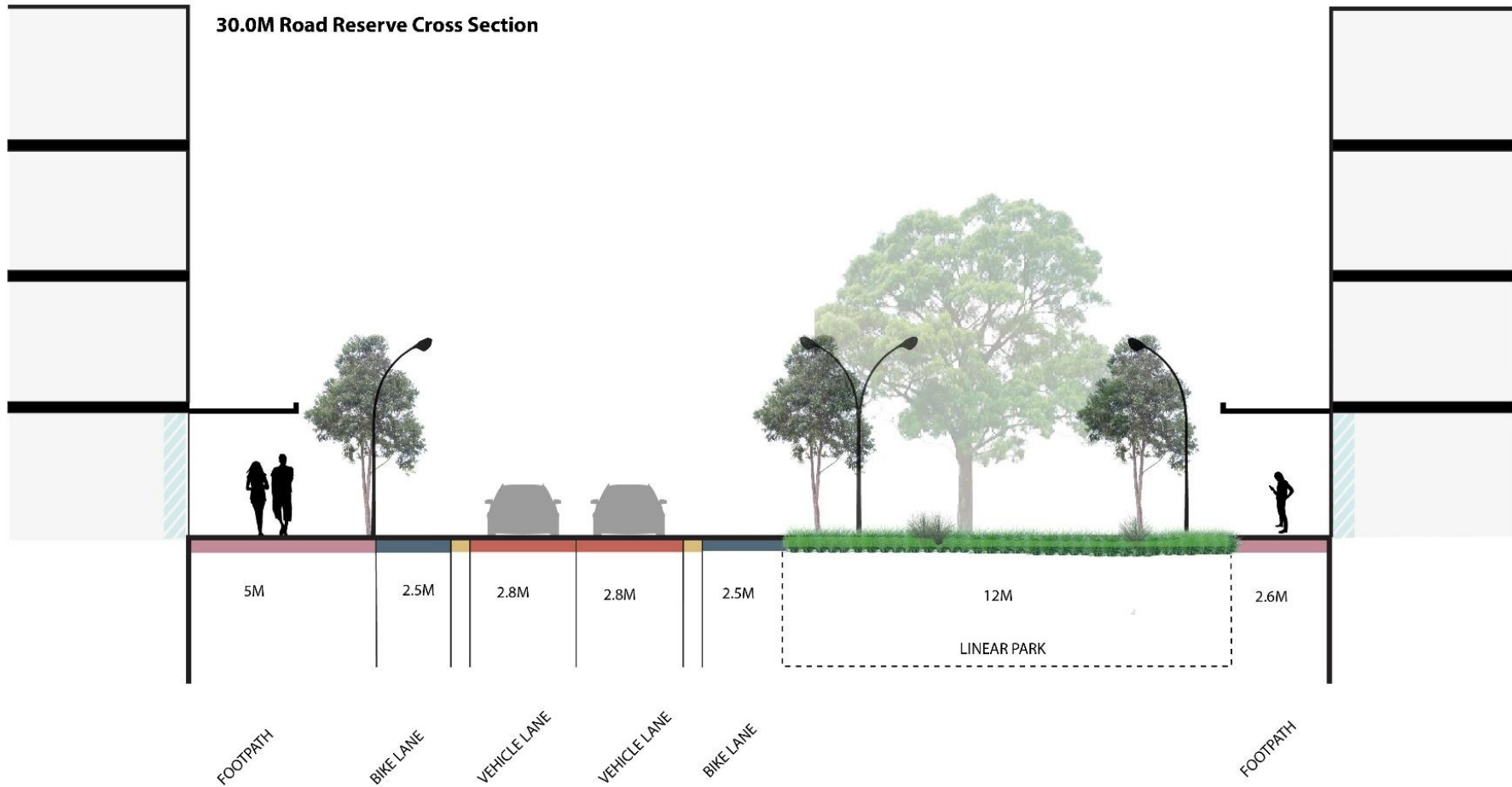
- Open space
- Key pedestrian and cyclist path and connections to Light Rail
- Linear connection to Centenary Reserve

CONSTRAINTS:

- Lack of lighting has previously created safety issues due to high volume of pedestrian and cyclist users, and time of usage.
- Linear park abuts back of residential dwellings, reducing passive surveillance and visibility.
- Width of park does not provide much space for additional uses

Wirraway Precinct

Fishermans Bend Taskforce Linear Park Cross Sections



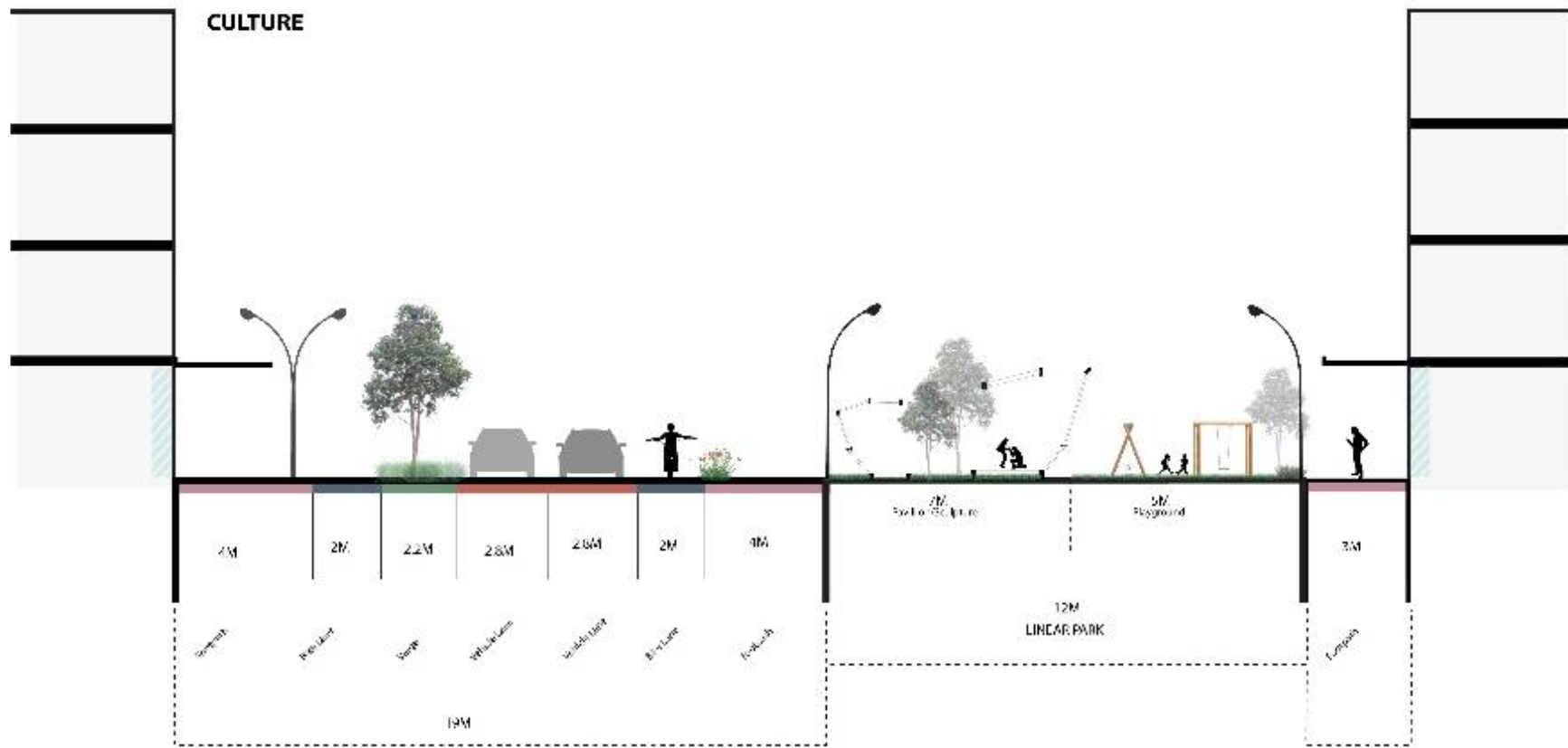
30.0M Road Reserve inclusive of Linear Park





22.0M Road Reserve plus Linear Park





22.0M Road Reserve plus Linear Park



22.0M Road Reserve plus Linear Park





22.0M Road Reserve plus Linear Park

1.0m 2.0m

